

45 NINTH AVENUE

CORNER OF NINTH AVENUE & WEST 14TH STREET
MEATPACKING DISTRICT, MANHATTAN



*The Gateway to the
Meatpacking District*

mona

CURRENTLY GUCCI

45 NINTH AVENUE



FLOOR PLANS

45 NINTH AVENUE

GROUND FLOOR

SIZE: 4,500 SF

CEILING HEIGHT: 14'

SECOND FLOOR

SIZE: 5,000 SF

CEILING HEIGHT: 12'

LOWER LEVEL

SIZE: 4,500 SF

FRONTAGE

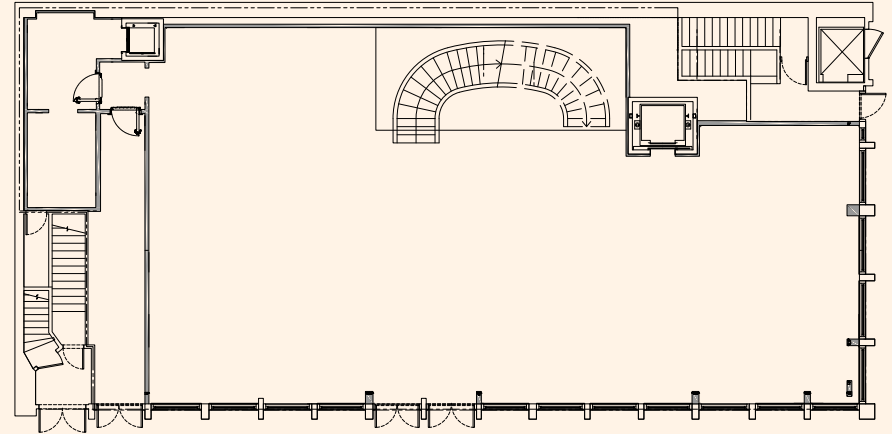
100' ON NINTH AVENUE

50' ON WEST 14TH STREET

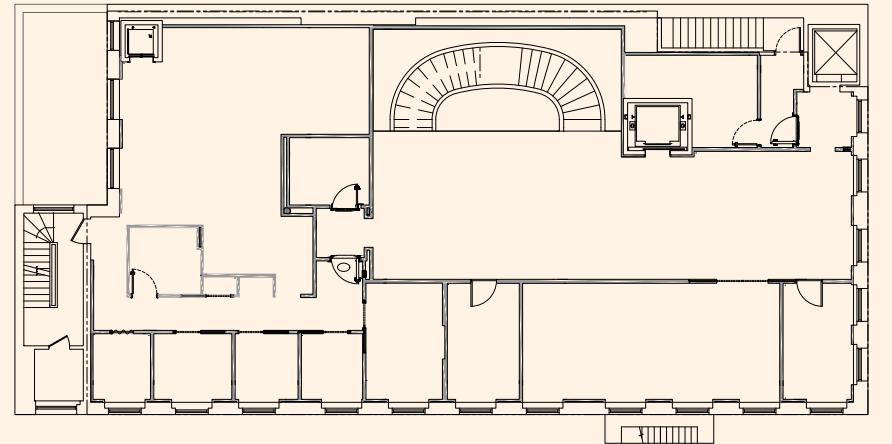
POSSESSION

ARRANGED

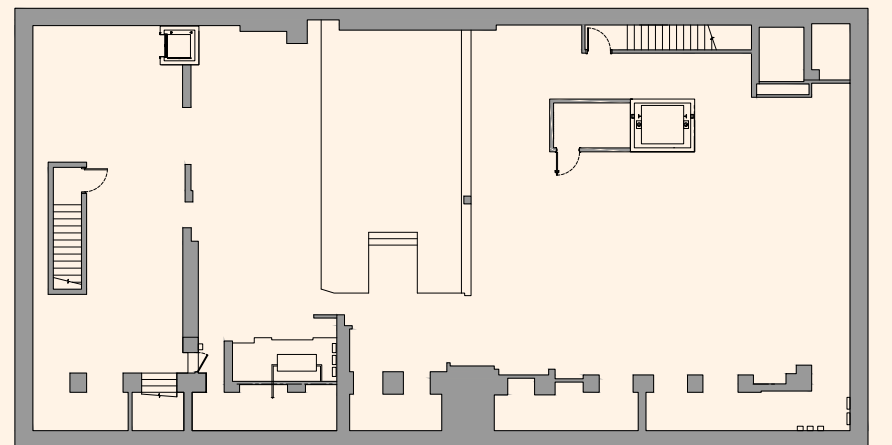
GROUND FLOOR
4,500 SF



SECOND FLOOR
5,000 SF



LOWER LEVEL
4,000 SF



HIGHLIGHTS

45 NINTH AVENUE

- CURRENTLY GUCCI.
- RECENTLY INSTALLED INTERIOR STAIRCASE CONNECTING THE GROUND AND SECOND FLOORS.
- LOWER LEVEL CAN BE CONVERTED TO SELLING SPACE.
- RETAIL SPACE INCLUDES A NEW, LANDMARK-APPROVED STOREFRONT.
- SAME BLOCK AS SOHO HOUSE AND ROLEX.
- STEPS FROM MAJOR TRAFFIC DRIVERS LIKE GOOGLE'S NEW YORK CITY HEADQUARTERS, THE WHITNEY MUSEUM, CHELSEA MARKET, THE HIGH LINE, LITTLE ISLAND, AND STARBUCKS RESERVE ROASTERY.
- CLOSE TO MULTIPLE HOTELS, INCLUDING THE STANDARD HOTEL AND GANSEVOORT HOTEL.



MAP

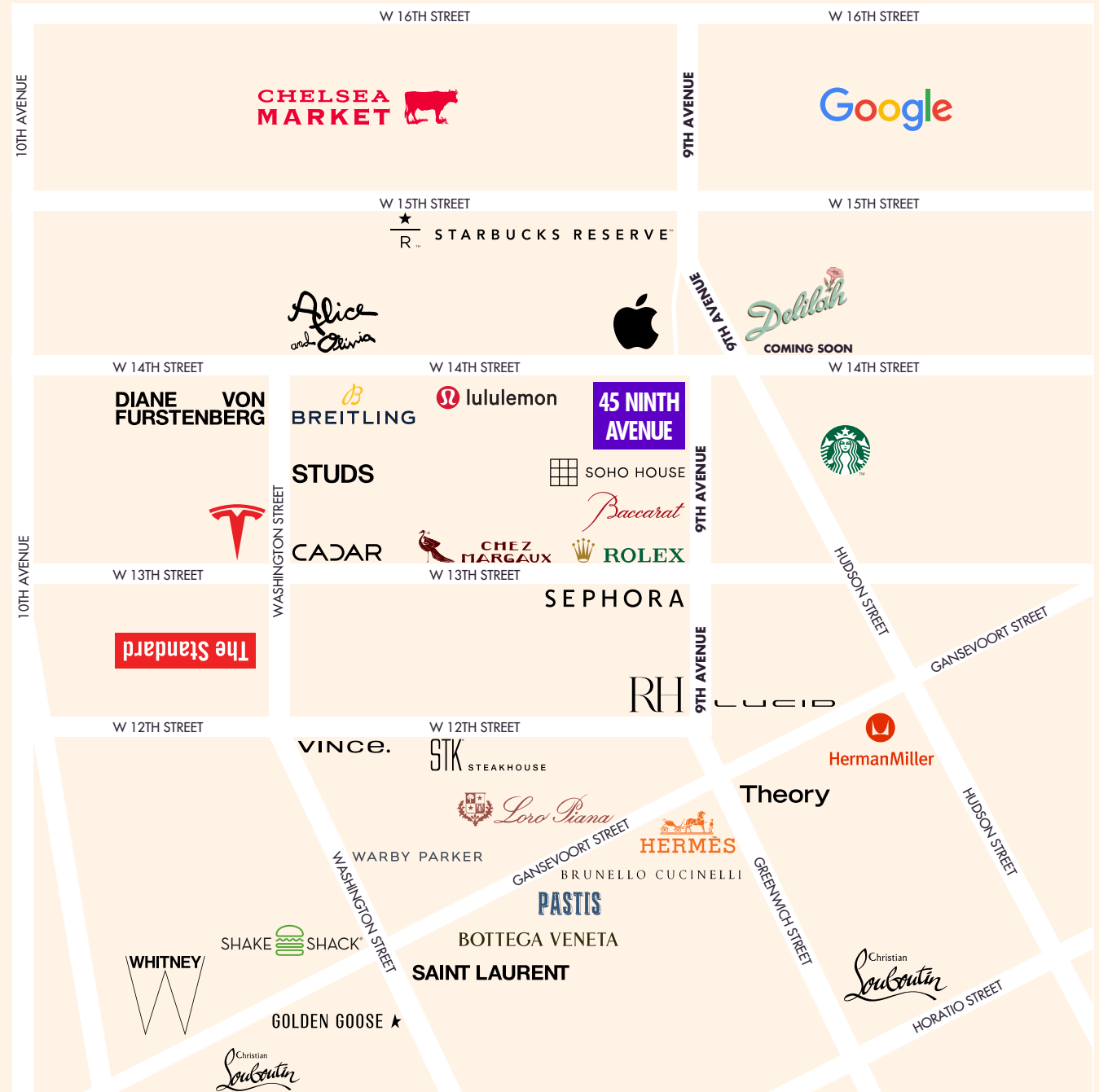
45 NINTH AVENUE

NEARBY PUBLIC TRANSIT



SELECT NEARBY TENANTS

- SOHO HOUSE
- APPLE
- SEPHORA
- STARBUCKS RESERVE ROASTERY
- THE WHITNEY MUSEUM
- PASTIS
- DIANE VON FURSTENBERG
- ROLEX
- BREITLING
- CHELSEA MARKET
- RESTORATION HARDWARE



This information has been obtained from sources believed reliable, but has not been verified for accuracy or completeness. You should conduct a careful, independent investigation of the property and verify all information. Any reliance on this information is solely at your own risk. MONA and the MONA logo are service marks of Mona Retail Holdings LLC. All other marks displayed on this document are the property of their respective owners, and the use of such logos does not imply any affiliation with or endorsement of Mona Retail Holdings LLC.

45 NINTH AVENUE

CORNER OF NINTH AVENUE & WEST 14TH STREET
MEATPACKING DISTRICT, MANHATTAN



BRANDON L. SINGER

BRANDON@RETAILBYMONA.COM
888-421-6662

MICHAEL CODY

MICHAEL@RETAILBYMONA.COM
513-374-8630

mona