

524 LORIMER STREET

mona
EXCLUSIVE RETAIL LEASING AGENT

**CORNER OF LORIMER STREET & AINSLIE STREET
WILLIAMSBURG, BROOKLYN**

TURNKEY RESTAURANT & BAR – LEASE ASSIGNMENT



FLOOR PLANS

524 LORIMER STREET

GROUND FLOOR

Size: 1,250 SF

Ceiling Height: 10'

BASEMENT

Size: 300 SF

FRONTAGE

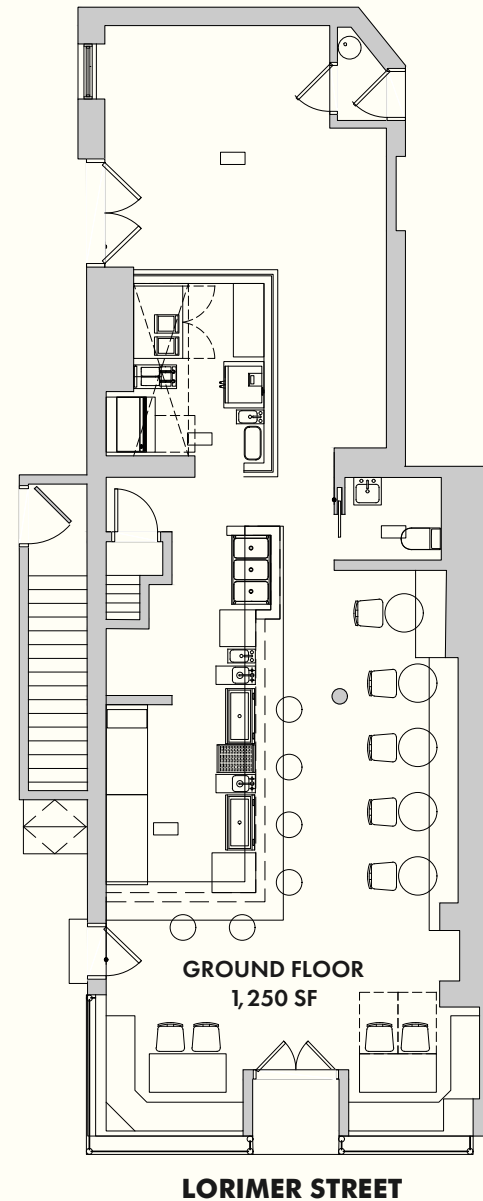
40' of Wraparound

POSSESSION

Arranged

HIGHLIGHTS

- Currently Rose Marie.
- Vented electric cooking.
- Ability to add sidewalk seating.
- Full liquor license in place.
- Key money required.



mona

ALEX TURBOFF

ALEX@RETAILBYMONA.COM
917-406-1269

MARISA SIMKIN

MARISA@RETAILBYMONA.COM
408-482-0064

INTERIOR

524 LORIMER STREET



mona

ALEX TURBOFF

ALEX@RETAILBYMONA.COM
917-406-1269

MARISA SIMKIN

MARISA@RETAILBYMONA.COM
408-482-0064

MAP

524 LORIMER STREET

SELECT NEARBY RETAIL TENANTS

- Barcade
- Kellogg's Diner
- BK Jani
- JR&Sons
- Key Food
- Think Coffee
- Poetica
- Campbell & Co



This information has been obtained from sources believed reliable, but has not been verified for accuracy or completeness. You should conduct a careful, independent investigation of the property and verify all information. Any reliance on this information is solely at your own risk. MONA and the MONA logo are service marks of Mona Retail Holdings LLC. All other marks displayed on this document are the property of their respective owners, and the use of such logos does not imply any affiliation with or endorsement of Mona Retail Holdings LLC.

mona

ALEX TURBOFF

ALEX@RETAILBYMONA.COM
917-406-1269

MARISA SIMKIN

MARISA@RETAILBYMONA.COM
408-482-0064