

17 WYCKOFF AVENUE

mona
EXCLUSIVE RETAIL LEASING AGENT

BETWEEN JEFFERSON STREET AND TROUTMAN STREET
BUSHWICK, BROOKLYN



**SECOND GENERATION
RESTAURANT FOR LEASE
IN BUSHWICK**

OVERVIEW

GROUND FLOOR

2,350 SF + Storage Mezzanine

FRONTAGE

25' on Wyckoff Avenue

POSSESSION

Immediate

USES

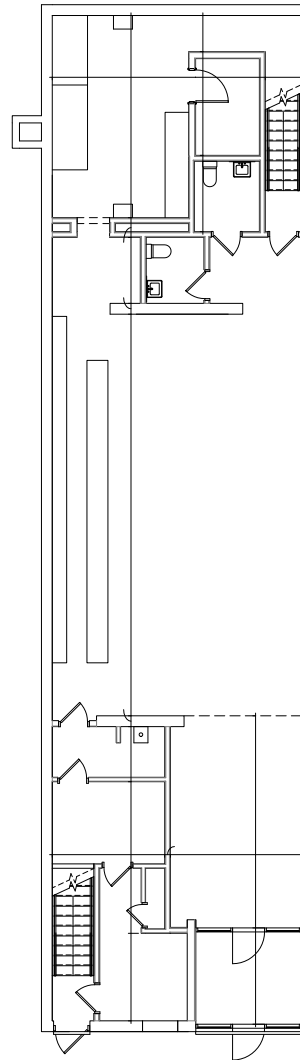
All uses considered

HIGHLIGHTS

- Fully equipped second generation restaurant.
- Previously Cocktail Magique.
- Located on Bushwick's best nightlife corridor.
- Tenant can brand the storefront.

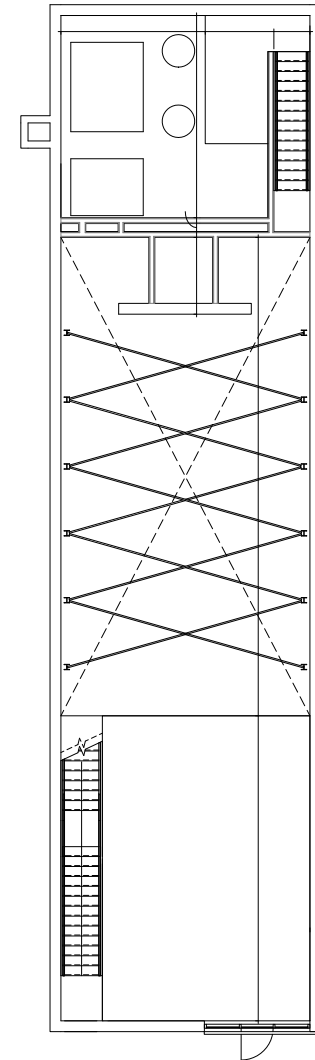
17 WYCKOFF AVENUE

GROUND FLOOR



WYCKOFF AVENUE

STORAGE MEZZANINE



mona

MANU WENDUM

MANU@RETAILBYMONA.COM

917-331-6238

INTERIOR PHOTOS

17 WYCKOFF AVENUE



mona

MANU WENDUM

MANU@RETAILBYMONA.COM

917-331-6238

MAP

17 WYCKOFF AVENUE

SELECT NEARBY RETAIL TENANTS

- La Cabra
- Seawolf
- House of Yes
- Los Hermanos
- KCBC
- The Turk's Inn
- The Sultan Room
- Nowon
- Company XIV
- Artichoke Pizza
- Xanadu
- Red Pavilion

This information has been obtained from sources believed reliable, but has not been verified for accuracy or completeness. You should conduct a careful, independent investigation of the property and verify all information. Any reliance on this information is solely at your own risk. MONA and the MONA logo are service marks of Mona Retail Holdings LLC. All other marks displayed on this document are the property of their respective owners, and the use of such logos does not imply any affiliation with or endorsement of Mona Retail Holdings LLC.



mona

MANU WENDUM

MANU@RETAILBYMONA.COM

917-331-6238