

352 EAST 20TH STREET

BETWEEN FIRST AND SECOND AVENUES
GRAMERCY PARK, MANHATTAN



OVERVIEW

352 EAST 20TH STREET

GROUND FLOOR

Size

320 SF

Ceiling Height

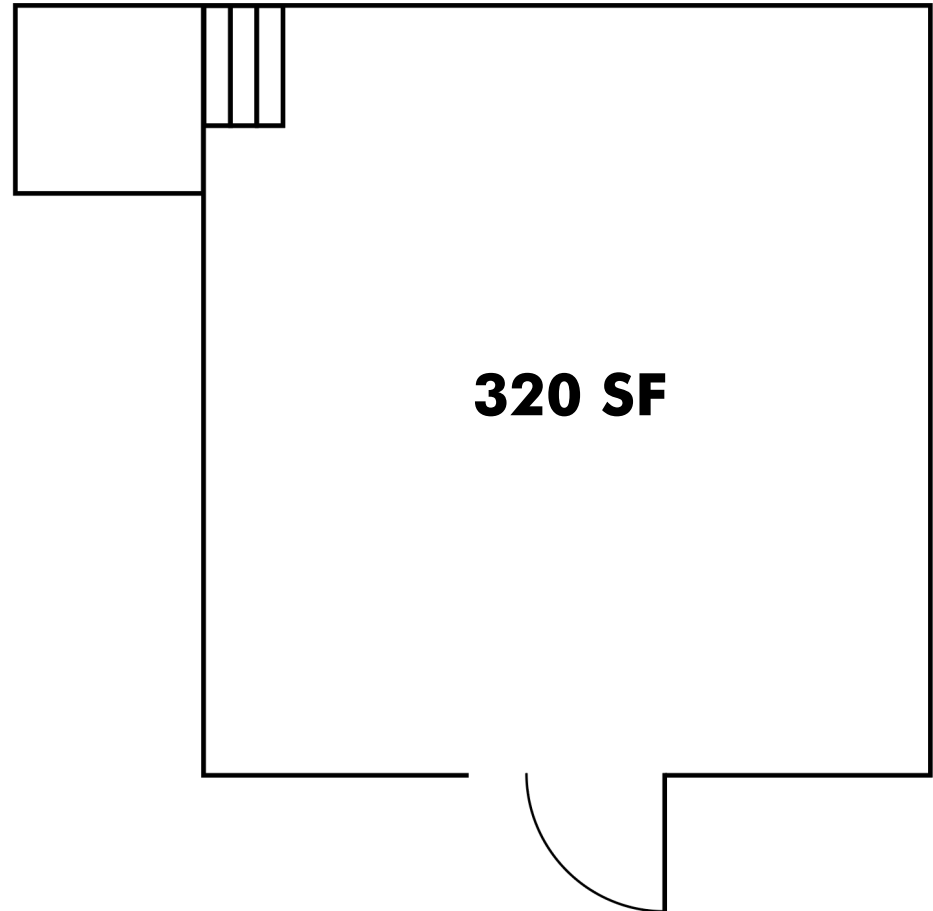
9 FT 7 IN

POSSESSION

Immediate

HIGHLIGHTS

- Across the street from Stuyvesant Town & Peter Cooper Village – 21K residents.
- Newly white-boxed space.
- Previously used for Dry-Cleaning.
- Nestled in a charming residential block.



The above floor plan was not created by an architect.
Dimensions are approximate.

mona

KELLY GEDINSKY

KELLY@RETAILBYMONA.COM
917-848-8528

MICHAEL ZUCKERMAN

MZUCKERMAN@RETAILBYMONA.COM
551-204-0478

MAP

352 EAST 20TH STREET

NEARBY PUBLIC TRANSIT

- L** 1st Avenue
- 6** 23rd Street

NEARBY CO-TENANTS

- Rosemary's
- D'Agostino
- Crysta Laundromat
- Hane
- FedEx
- TD Bank
- Rouge & Blanc Wine
- Ess-A-Bagel
- Benjamin Moore
- Ace Hardware
- Dunkin Donuts
- Bank of America
- McDonald's
- Starbucks

This information has been obtained from sources believed reliable, but has not been verified for accuracy or completeness. You should conduct a careful, independent investigation of the property and verify all information. Any reliance on this information is solely at your own risk. MONA and the MONA logo are service marks of Mona Retail Holdings LLC. All other marks displayed on this document are the property of their respective owners, and the use of such logos does not imply any affiliation with or endorsement of Mona Retail Holdings LLC.



mona

KELLY GEDINSKY

KELLY@RETAILBYMONA.COM
917-848-8528

MICHAEL ZUCKERMAN

MZUCKERMAN@RETAILBYMONA.COM
551-204-0478