

# 291 METROPOLITAN AVENUE

CORNER OF ROEBLING STREET  
WILLIAMSBURG, BROOKLYN

**EXPANSIVE LOWER LEVEL  
RETAIL IN WILLIAMSBURG**

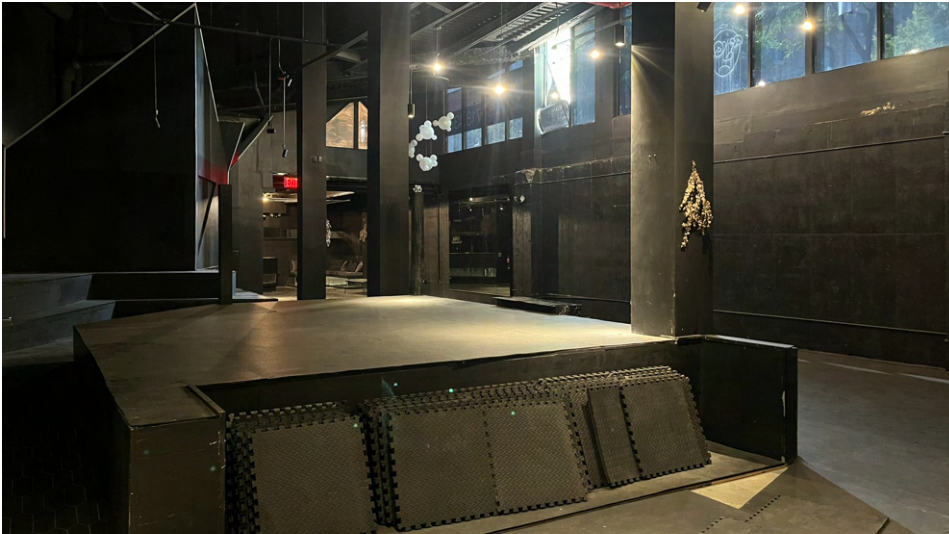
**mona**  
EXCLUSIVE RETAIL LEASING AGENT

RENDERED IMAGE



**291 METROPOLITAN AVENUE**

## **BUILT-OUT FOR FITNESS USE**



**mona**

**BRANDON SINGER**

BRANDON@RETAILBYMONA.COM  
888-421-6662

**MARISA SIMKIN**

MARISA@RETAILBYMONA.COM  
408-482-0064

# OVERVIEW

291 METROPOLITAN AVENUE

## GROUND FLOOR

Size: 600 SF

Ceiling Height: 11 FT

## LOWER LEVEL

Size: 5,487 SF

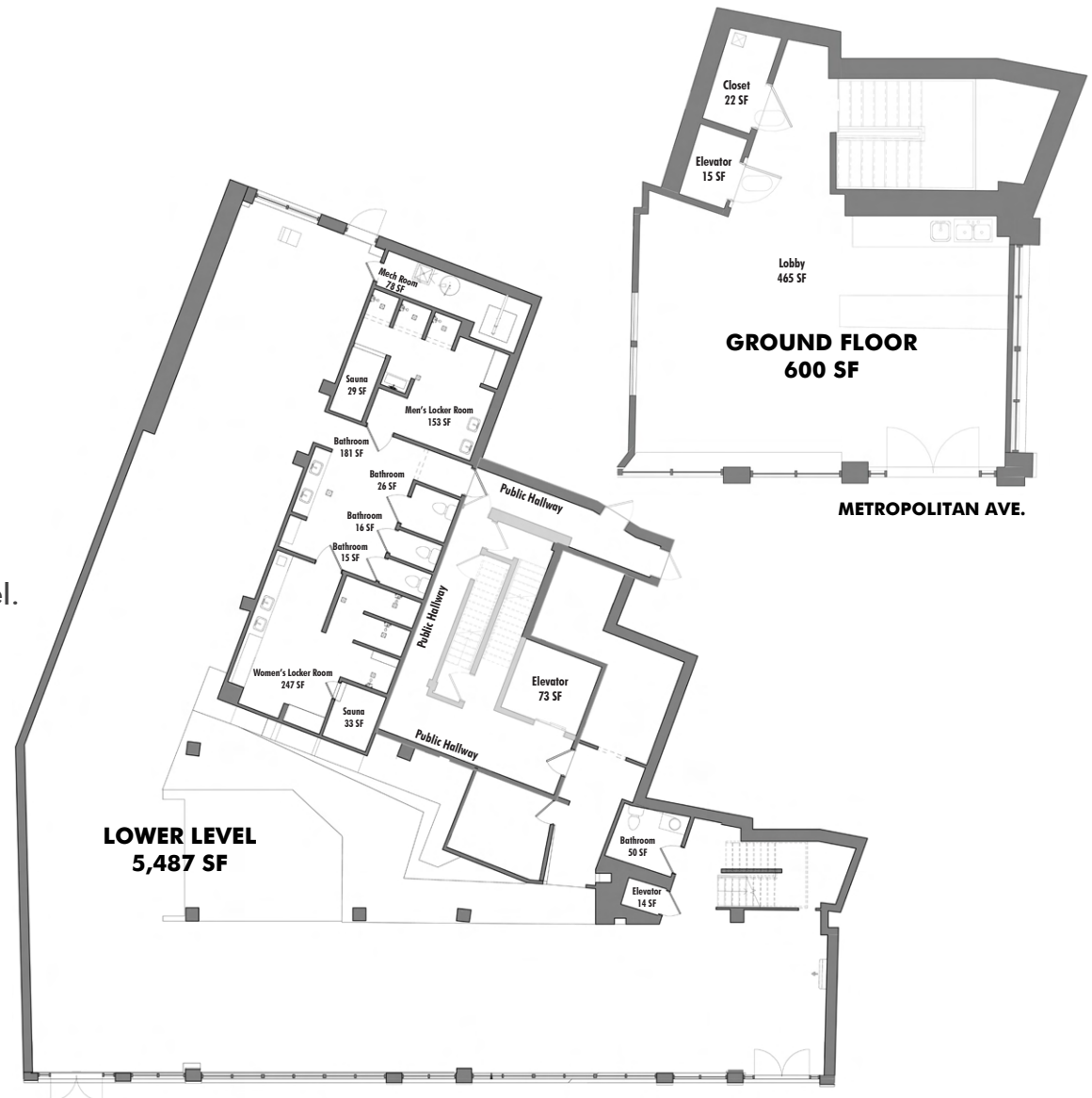
Ceiling Height: 20 FT

## POSSESSION

Immediate

## HIGHLIGHTS

- Ground Floor entrance with elevator to Lower Level.
- Located in the heart of Williamsburg, Brooklyn.
- Double height ceilings in the Lower Level.
- Locker rooms and showers in place.
- All uses considered.



mona

BRANDON SINGER

BRANDON@RETAILBYMONA.COM  
888-421-6662

MARISA SIMKIN

MARISA@RETAILBYMONA.COM  
408-482-0064

# MAP

## 291 METROPOLITAN AVENUE

### NEARBY PUBLIC TRANSIT

- L** Bedford Avenue
- G** Metropolitan Avenue

### NEARBY CO-TENANTS

- Apple
- Whole Foods
- Sephora
- The Butcher's Daughter
- Ace's Pizza
- Pop Up Bagels
- La Bicyclette
- Pod Brooklyn Hotel
- Just Salad
- Cava
- Tacombi
- Levain
- Inday
- Westville
- Dig



This information has been obtained from sources believed reliable, but has not been verified for accuracy or completeness. You should conduct a careful, independent investigation of the property and verify all information. Any reliance on this information is solely at your own risk. MONA and the MONA logo are service marks of Mona Retail Holdings LLC. All other marks displayed on this document are the property of their respective owners, and the use of such logos does not imply any affiliation with or endorsement of Mona Retail Holdings LLC.

**mona**

**BRANDON SINGER**

BRANDON@RETAILBYMONA.COM  
888-421-6662

**MARISA SIMKIN**

MARISA@RETAILBYMONA.COM  
408-482-0064