

215 EAST 26TH STREET

Between Second and Third Avenues
Kips Bay, Manhattan

TURNKEY PET GROOMER

mona
EXCLUSIVE RETAIL LEASING AGENT



OVERVIEW

215 EAST 26TH STREET

GROUND FLOOR

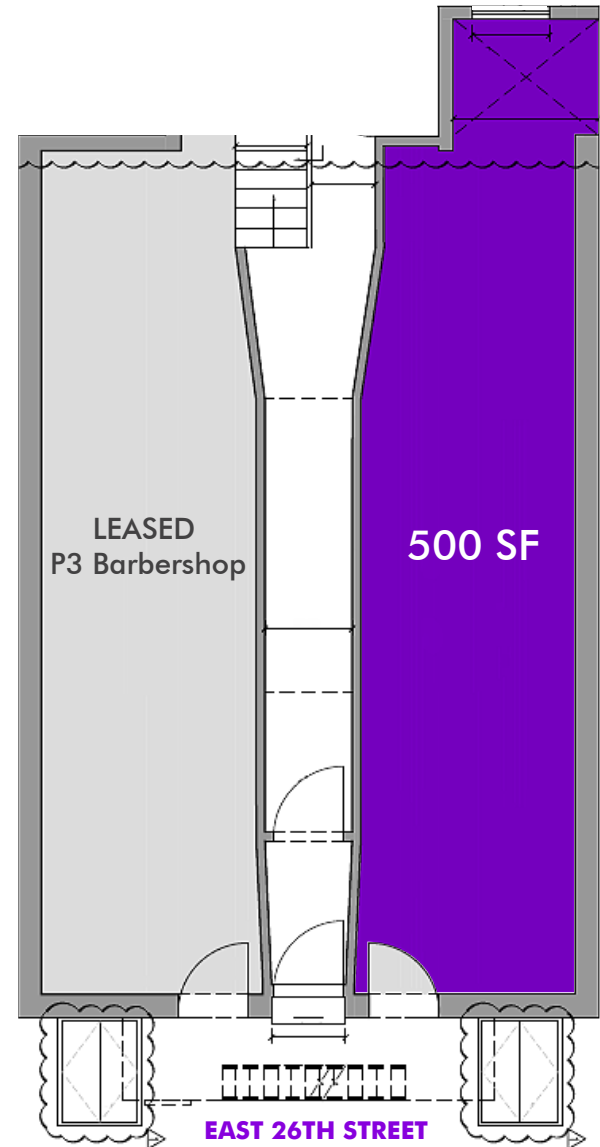
500 SF

POSSESSION

Arranged

HIGHLIGHTS

- Dense residential population.
- Large flagpole signage.
- Close proximity to Baruch College and NYU Dentistry.
- Bordering Kips Bay and Gramercy Park.
- All non-vented uses considered.



mona

KELLY GEDINSKY

KELLY@RETAILBYMONA.COM
917-848-8528

WILLIAM ISORE

WILLIAM@RETAILBYMONA.COM
202-714-4699

MAP

215 EAST 26TH STREET

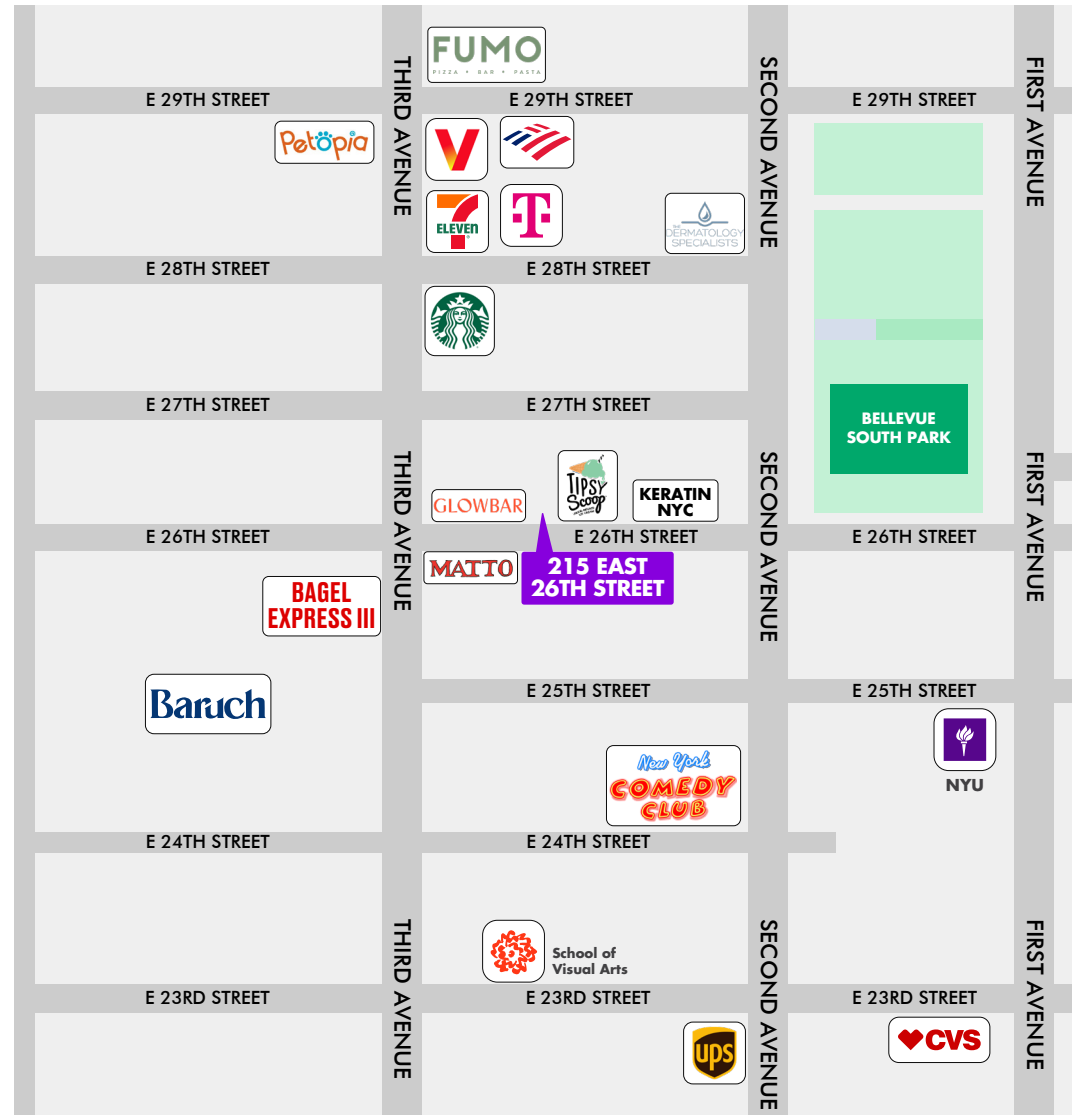
NEARBY PUBLIC TRANSIT:

6 M34 M15

NEIGHBORING RETAIL TENANTS

- Glowbar
- Topsy Scoop
- Keratin NYC
- Baruch College
- NYU Dentistry
- CVS
- School of Visual Arts
- New York Comedy Club
- Bagel Express
- UPS
- MATTO Espresso
- 7/11
- Starbucks
- Petopia
- The Dermatology Specialists
- T-Mobile
- Uniwax
- Bank of America
- Verizon
- Fumo

This information has been obtained from sources believed reliable, but has not been verified for accuracy or completeness. You should conduct a careful, independent investigation of the property and verify all information. Any reliance on this information is solely at your own risk. MONA and the MONA logo are service marks of Mona Retail Holdings LLC. All other marks displayed on this document are the property of their respective owners, and the use of such logos does not imply any affiliation with or endorsement of Mona Retail Holdings LLC.



mona

KELLY GEDINSKY

KELLY@RETAILBYMONA.COM
917-848-8528

WILLIAM ISORE

WILLIAM@RETAILBYMONA.COM
202-714-4699