

122 GREENWICH AVENUE

BETWEEN 8TH AVENUE & WEST 13TH STREET

**2,700 SF RETAIL OPPORTUNITY AT
THE CROSSROADS OF MEATPACKING
DISTRICT AND WEST VILLAGE**

mona
EXCLUSIVE RETAIL LEASING AGENT

122 GREENWICH AVENUE

CURRENTLY JUICE PRESS ACROSS FROM JACKSON SQUARE PARK



mona

BRANDON SINGER

BRANDON@RETAILBYMONA.COM
888-421-6662

SUZANNE BERNSTOCK

SUZANNE@RETAILBYMONA.COM
610-903-2207

OVERVIEW

122 GREENWICH AVENUE

GROUND FLOOR

1,582 SF

STORAGE (Non-Contiguous)

1,118 SF

FRONTAGE

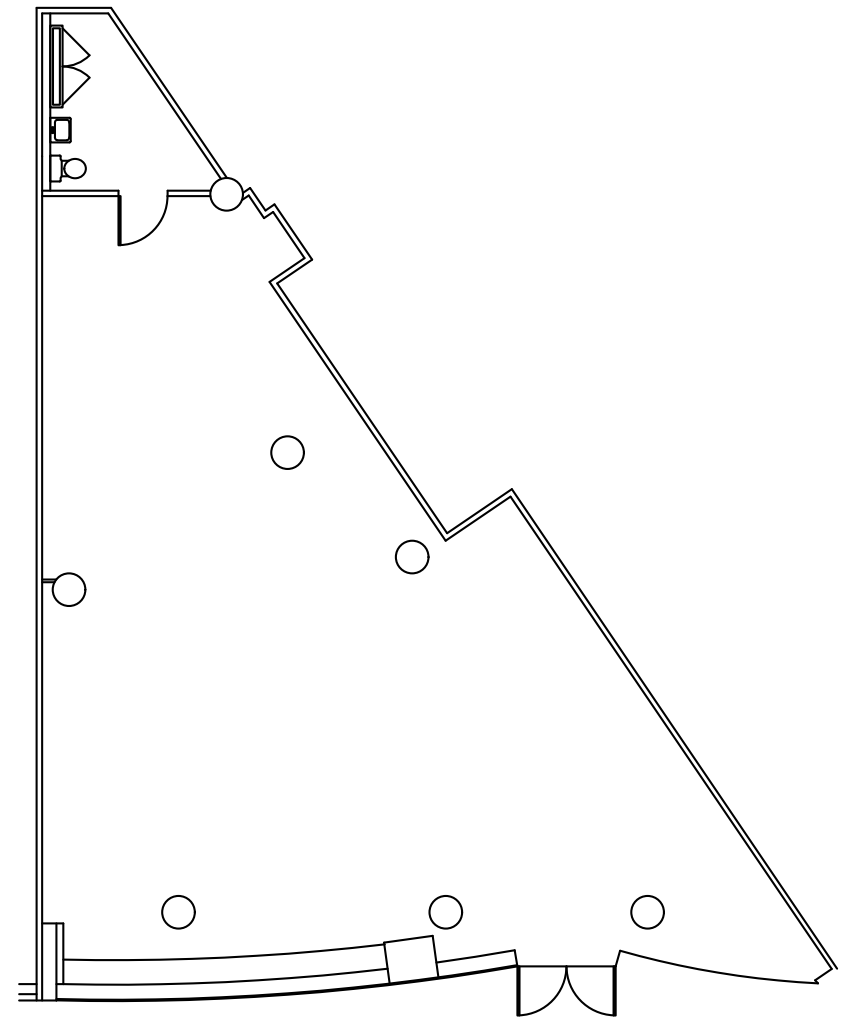
45 FT on Greenwich Avenue

POSSESSION

Arranged

HIGHLIGHTS

- Currently Juice Press.
- Premier retail opportunity at the intersection of West Village and Meatpacking District.
- Located at the base of One Jackson Square, a boutique luxury condominium designed by KPF.
- Co-tenancy with Starbucks and TD Bank.
- Steps from Google HQ, Chelsea Market, Lenox Health, and major subway lines on 14th Street.



GREENWICH AVENUE

mona

BRANDON SINGER

BRANDON@RETAILBYMONA.COM
888-421-6662

SUZANNE BERNSTOCK

SUZANNE@RETAILBYMONA.COM
610-903-2207

MAP

122 GREENWICH AVENUE

NEARBY PUBLIC TRANSIT

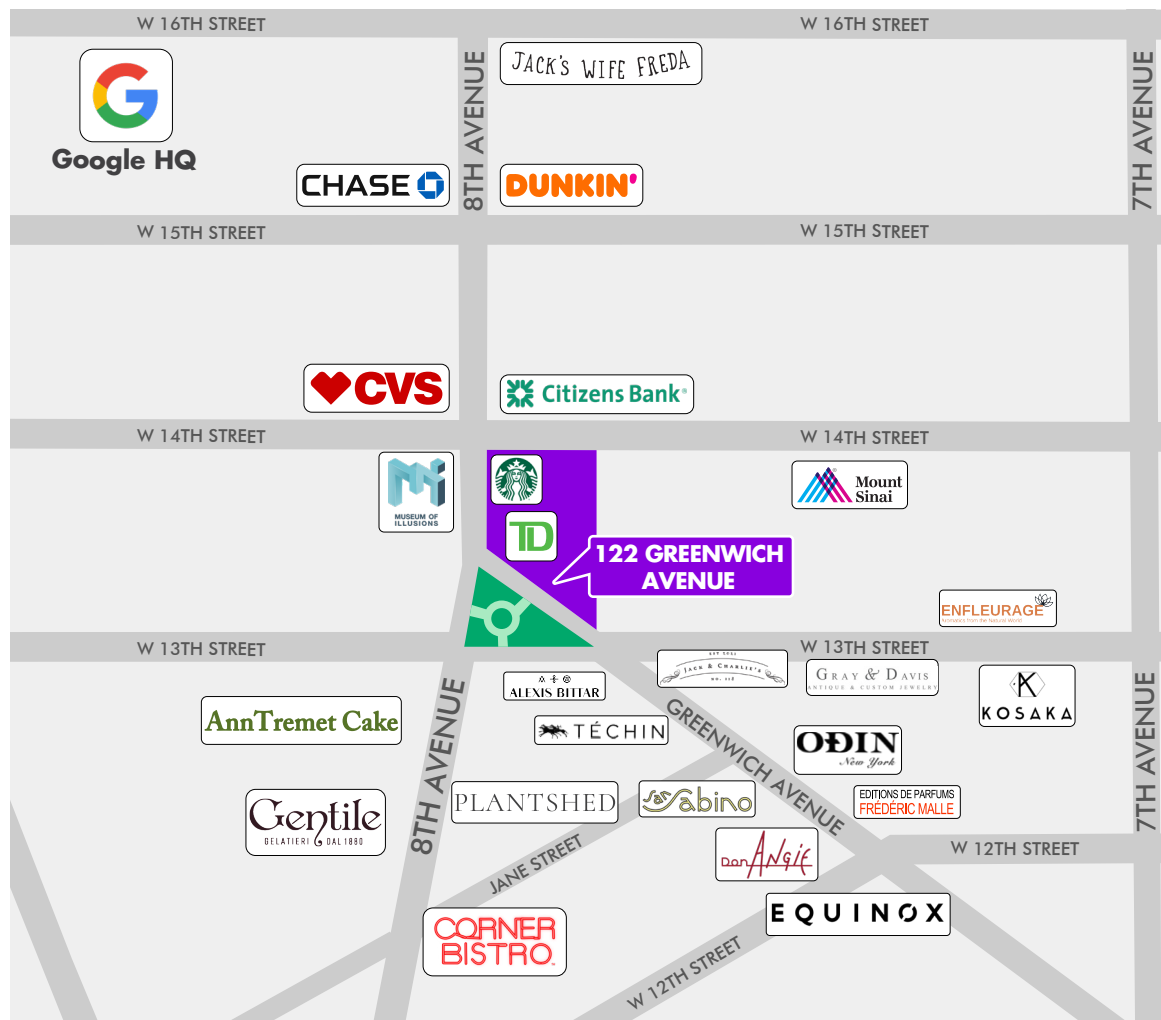
1 2 3 14th St & 8th Ave
Average Weekday Ridership: 27,211

A C E L 14th St & 6th Ave
Average Weekday Ridership: 26,130

NEIGHBORING RETAIL TENANTS

- Starbucks
- TD Bank
- Bon Bon Swedish Candy
- Don Angie
- Plantshed
- Aux Merveilleux de Fred
- Alexis Bittar
- Equinox
- Chelsea Market
- Google HQ
- Soho House

This information has been obtained from sources believed reliable, but has not been verified for accuracy or completeness. You should conduct a careful, independent investigation of the property and verify all information. Any reliance on this information is solely at your own risk. MONA and the MONA logo are service marks of Mona Retail Holdings LLC. All other marks displayed on this document are the property of their respective owners, and the use of such logos does not imply any affiliation with or endorsement of Mona Retail Holdings LLC.



mona

BRANDON SINGER

BRANDON@RETAILBYMONA.COM
888-421-6662

SUZANNE BERNSTOCK

SUZANNE@RETAILBYMONA.COM
610-903-2207