

# 294 8TH AVENUE

Southeast corner of 25th Street

CHELSEA CORNER  
RETAIL SPACE

**mona**  
EXCLUSIVE RETAIL LEASING AGENT



# FLOOR PLAN

294 8TH AVENUE

## GROUND FLOOR:

2,000 SF + usable Mezzanine

## CEILING HEIGHT:

16 FT

## FRONTAGE:

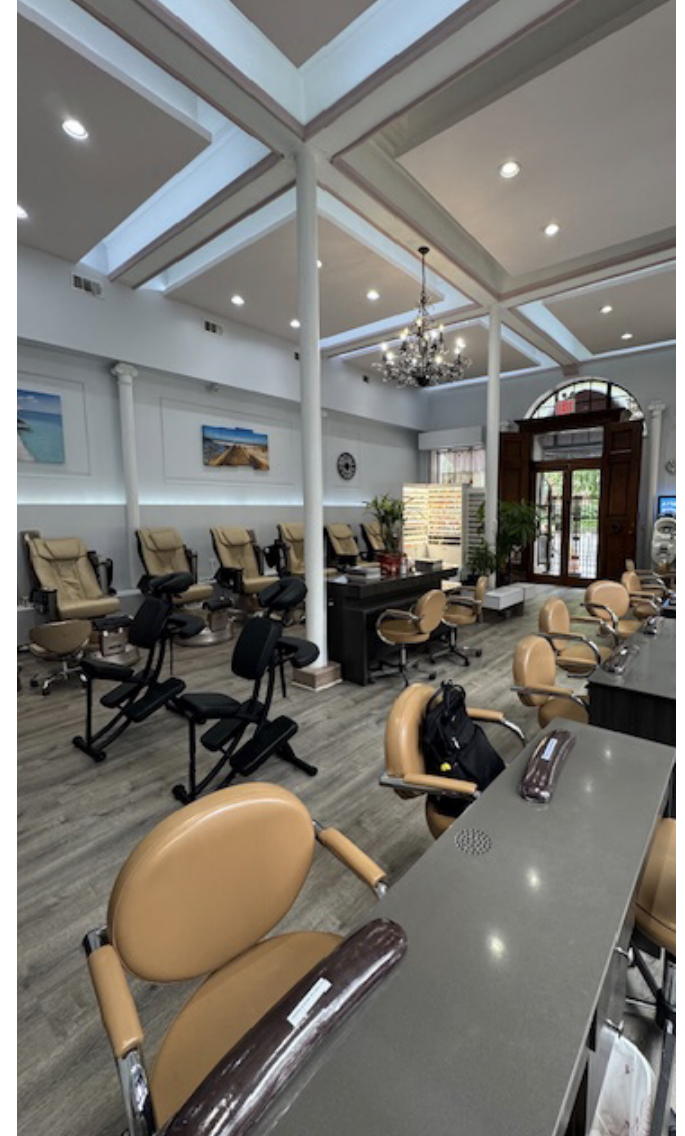
60' of Wraparound Frontage

## POSSESSION:

Arranged

## HIGHLIGHTS

- Exceptional corner branding opportunity.
- Adjacent to subway entrance.
- Surrounded by high density residential.
- Build out Mezzanine with treatment rooms.
- All uses considered.



mona

JOHN DIGANGI

JOHN@RETAILBYMONA.COM  
516-776-0664

MARISA SIMKIN

MARISA@RETAILBYMONA.COM  
408-482-0064

# MAP

## NEARBY PUBLIC TRANSIT:

**C E** @ 23rd Street

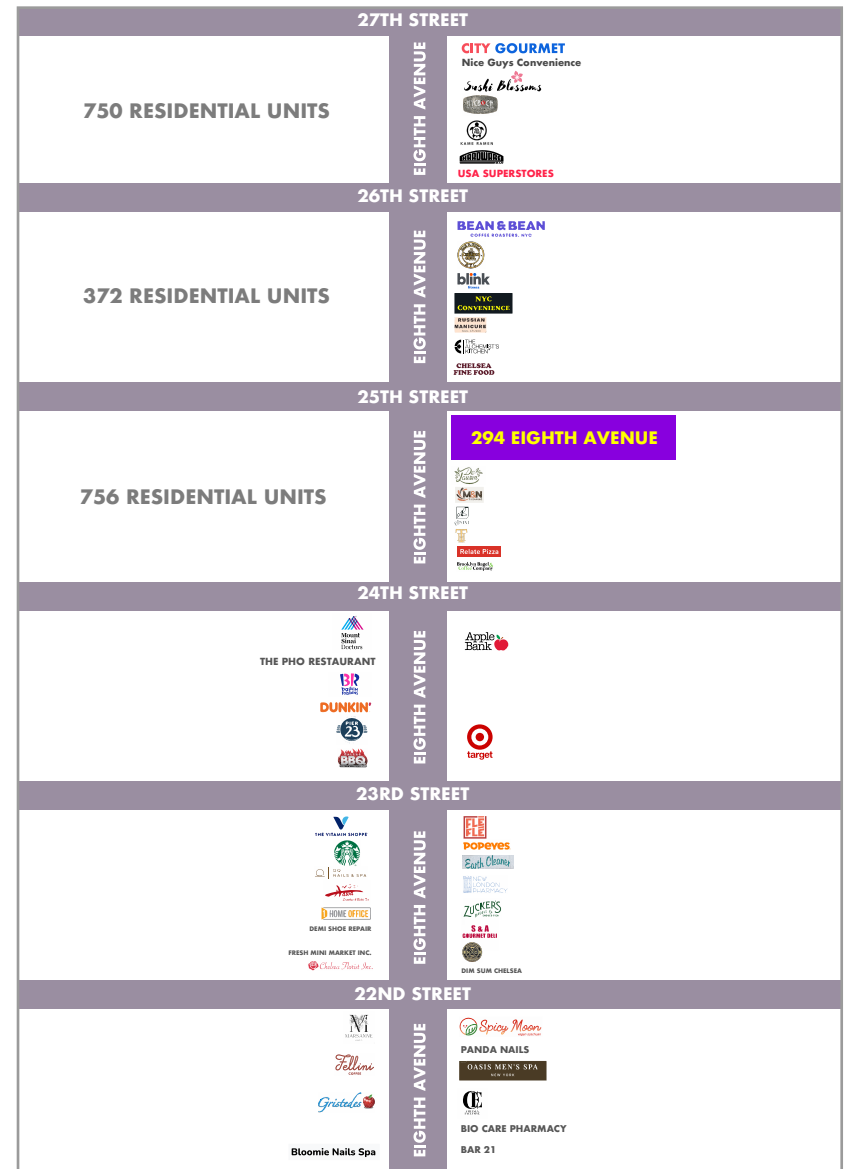
## Select Nearby Retail Tenants

City Gourmet Market  
Nice Guys Convenience  
Sushi Blossoms  
New York City Bagel & Coffee House  
Kame  
USA Superstores  
Bean and Bean Coffee  
Chelsea Bell Bar  
Blink Fitness  
Convenience NYC  
Russian Manicure Beauty Studio  
The Alchemy Cannabis  
Chelsea Fine Food  
De Lauren Wines  
M & N Cleaners  
Anixi  
Towne House  
Relate Pizza  
Brooklyn Bagel & Coffee Company

Mount Sinai Doctors  
The Pho Restaurant  
Baskin Robbins  
Dunkin Donuts  
Dallas BBQ  
Apple Bank  
Target  
Vitamin Shoppe  
Starbucks  
QQ Nails & Spa  
Hawa  
Demi Shoe Repair  
Allerton Art & Custom Framing  
Fresh Mini Market Inc.  
Chelsea Merit Florist  
Fle-Fle Mediterranean Grill  
Popeye's  
Earth Cleaner  
New London Pharmacy

This information has been obtained from sources believed reliable, but has not been verified for accuracy or completeness. You should conduct a careful, independent investigation of the property and verify all information. Any reliance on this information is solely at your own risk. MONA and the MONA logo are service marks of Mona Retail Holdings LLC. All other marks displayed on this document are the property of their respective owners, and the use of such logos does not imply any affiliation with or endorsement of Mona Retail Holdings LLC.

## 294 8TH AVENUE



mona

JOHN DIGANGI

JOHN@RETAILBYMONA.COM  
516-776-0664

MARISA SIMKIN

MARISA@RETAILBYMONA.COM  
408-482-0064