

276 BEDFORD AVENUE

CORNER OF NORTH 1ST STREET, WILLIAMSBURG, BROOKLYN

RETAIL

RETAIL

mona
EXCLUSIVE RETAIL LEASING AGENT

CORNER RETAIL IN THE HEART OF WILLIAMSBURG FOR SUBLEASE

FLOOR PLANS

GROUND FLOOR:

Size: 2,370 SF

Ceiling Height: 13 FT

LOWER LEVEL:

Size: 2,500 SF

FRONTAGE:

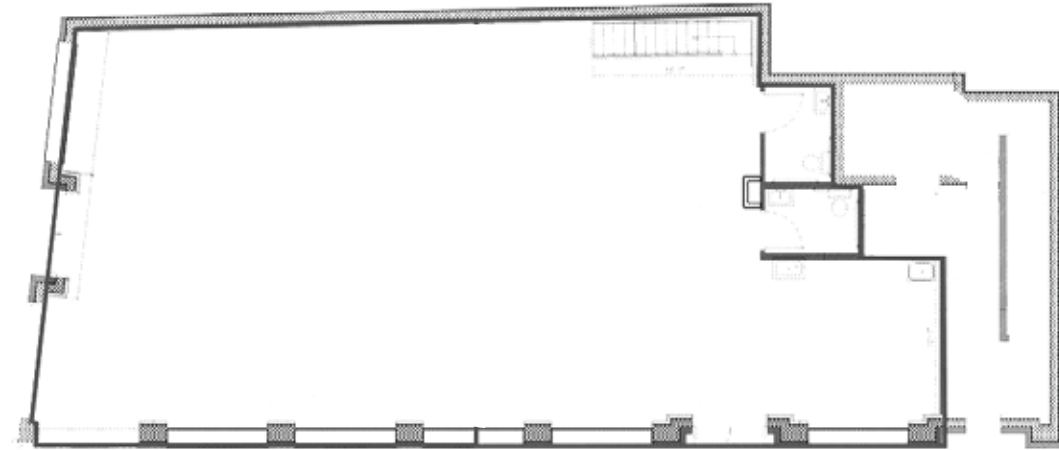
35 FT on Bedford Avenue & 83 FT
on North 1st Street

POSSESSION:

Immediate

HIGHLIGHTS

- Over 110 feet of wraparound frontage.
- Column-free.
- Selling Lower Level.
- Four restrooms in place.
- All uses considered.



GROUND FLOOR



LOWER LEVEL

mona

BRANDON SINGER

BRANDON@RETAILBYMONA.COM
888-421-6662

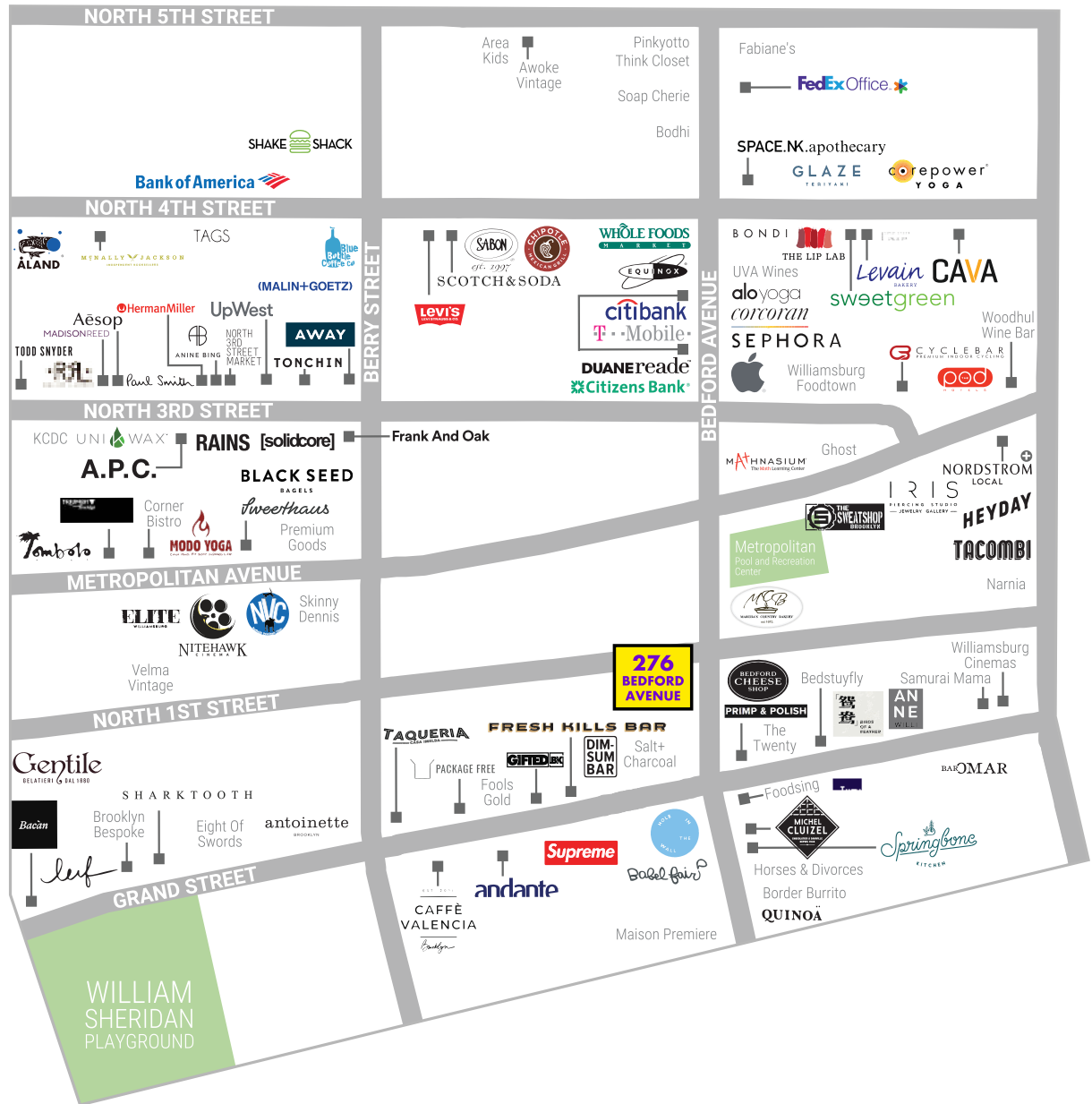
MARISA SIMKIN

MARISA@RETAILBYMONA.COM
408-482-0064

MAP

SELECT NEARBY RETAIL TENANTS:

Martha's Country
 Bakery
 Hole In The Wall
 Maison Premiere
 Apple
 Citizens Bank
 Equinox
 Whole Foods
 Tacombi
 Sephora



This information has been obtained from sources believed reliable, but has not been verified for accuracy or completeness. You should conduct a careful, independent investigation of the property and verify all information. Any reliance on this information is solely at your own risk. MONA and the MONA logo are service marks of Mona Retail Holdings LLC. All other marks displayed on this document are the property of their respective owners, and the use of such logos does not imply any affiliation with or endorsement of Mona Retail Holdings LLC.

mona

BRANDON SINGER

BRANDON@RETAILBYMONA.COM
 888-421-6662

MARISA SIMKIN

MARISA@RETAILBYMONA.COM
 408-482-0064