

32 CLIFF STREET

mona
EXCLUSIVE RETAIL LEASING AGENT

Between Fulton Street & John Street
Financial District, Manhattan



STOREFRONT IS RENDERED

FLOOR PLAN 32 CLIFF STREET

GROUND FLOOR:

1,800 SF

BASEMENT:

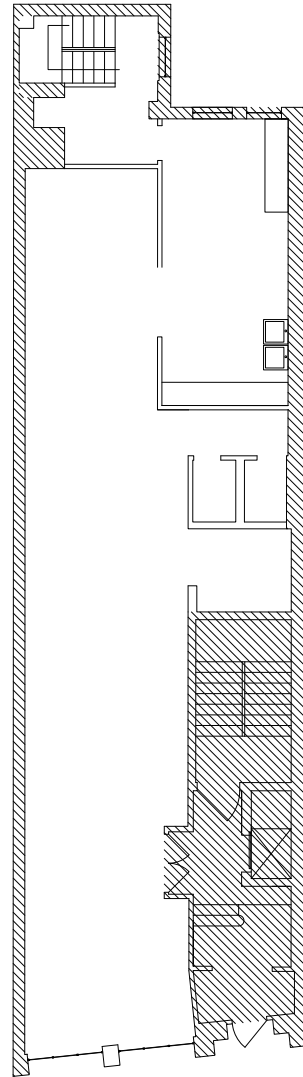
2,200 SF

POSSESSION:

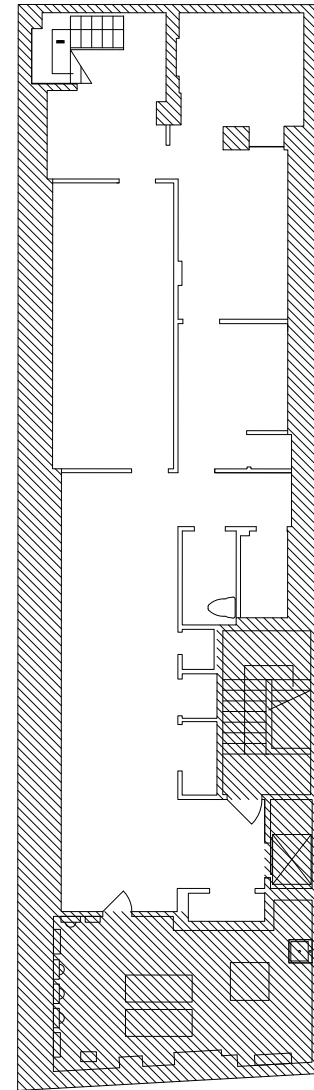
Immediate

HIGHLIGHTS:

- Centrally located Financial District space.
- Ideal for service-oriented tenants.
- Entrance is shared with building.
- All uses considered.



GROUND FLOOR
CLIFF STREET



BASEMENT

mona

MANU WENDUM

MANU@RETAILBYMONA.COM
917-331-6238

MARISA SIMKIN

MARISA@RETAILBYMONA.COM
408-482-0064

