

# 285

MADISON AVENUE

HIGHLY VISIBLE MADISON  
AVENUE CORNER RETAIL

Corner of East 40th Street  
Grand Central, Manhattan

**menga**  
EXCLUSIVE RETAIL LEASING AGENT



# FLOOR PLAN

285 MADISON  
AVENUE

## GROUND FLOOR:

Size: 3,553 SF  
Ceiling Height: 18 FT 2 IN

## STORAGE MEZZANINE:

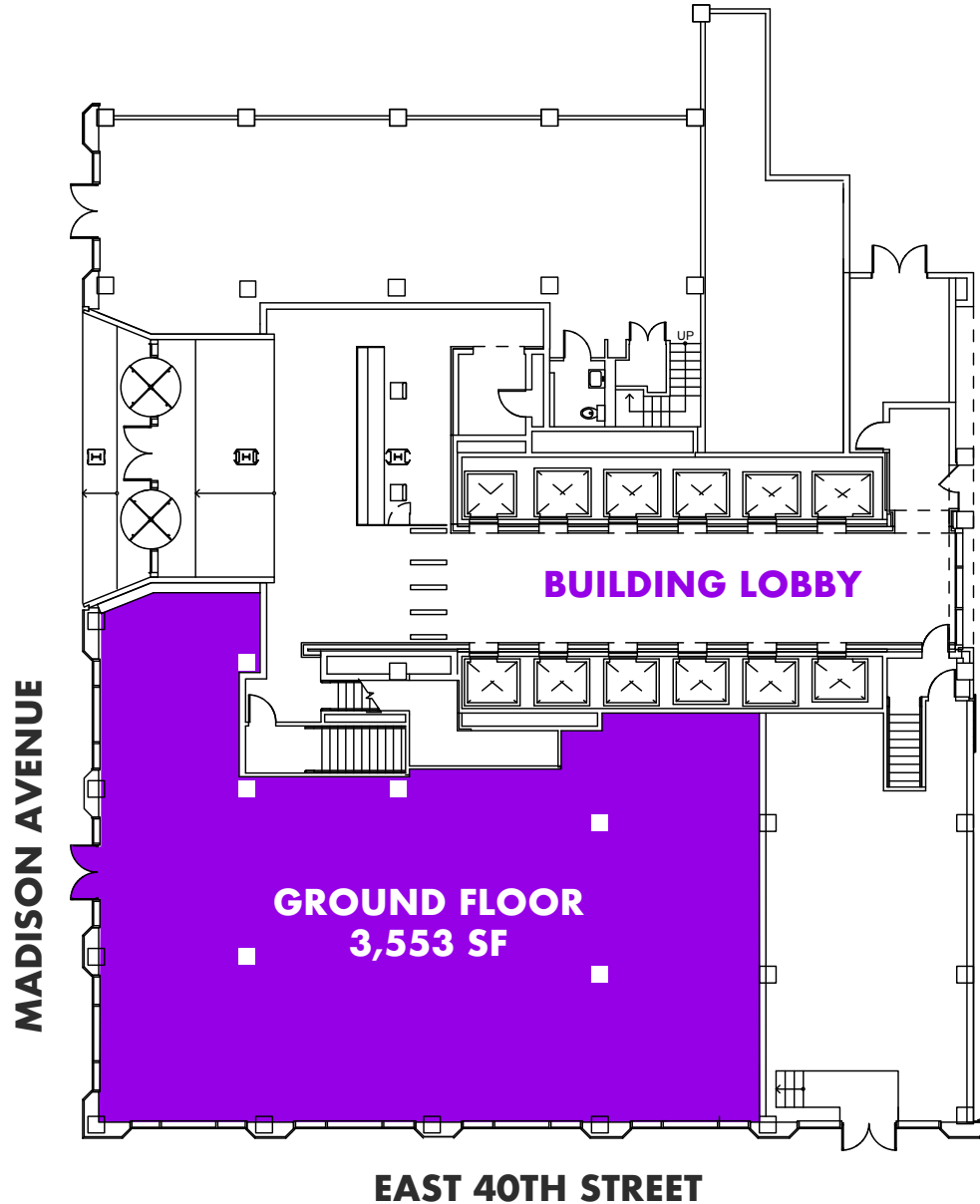
Size: 998 SF  
Ceiling Height: 7 FT 6 IN

## FRONTAGE

110 FT of wraparound

## POSSESSION:

October 2025



mona

**BRANDON SINGER**

BRANDON@RETAILBYMONA.COM  
888-421-6662

**MARISA SIMKIN**

MARISA@RETAILBYMONA.COM  
408-482-0064

**SUZANNE BERNSTOCK**

SUZANNE@RETAILBYMONA.COM  
610-903-2207



# HIGHLIGHTS

285 MADISON  
AVENUE

## HIGHLIGHTS:

- Corner of East 40th Street and Madison Avenue.
- Highly visible Madison Avenue corner retail.
- Soaring ceiling heights of 18 FT 2 IN.
- Currently Popular Bank.
- Join Naya, Panera, and Benjamin's Steak House.
- Adjacent to Building Lobby.
- Steps from Grand Central and Bryant Park – Servicing over 70 million commuters.
- At the base of a 26 story, 530,000 SF office building with notable tenants: Tommy Hilfiger, General Electric, and Brighthouse Financial.
- All uses considered.



mona

**BRANDON SINGER**

BRANDON@RETAILBYMONA.COM  
888-421-6662

**MARISA SIMKIN**

MARISA@RETAILBYMONA.COM  
408-482-0064

**SUZANNE BERNSTOCK**

SUZANNE@RETAILBYMONA.COM  
610-903-2207

# MAP

# 285 MADISON AVENUE

## NEARBY PUBLIC TRANSIT:

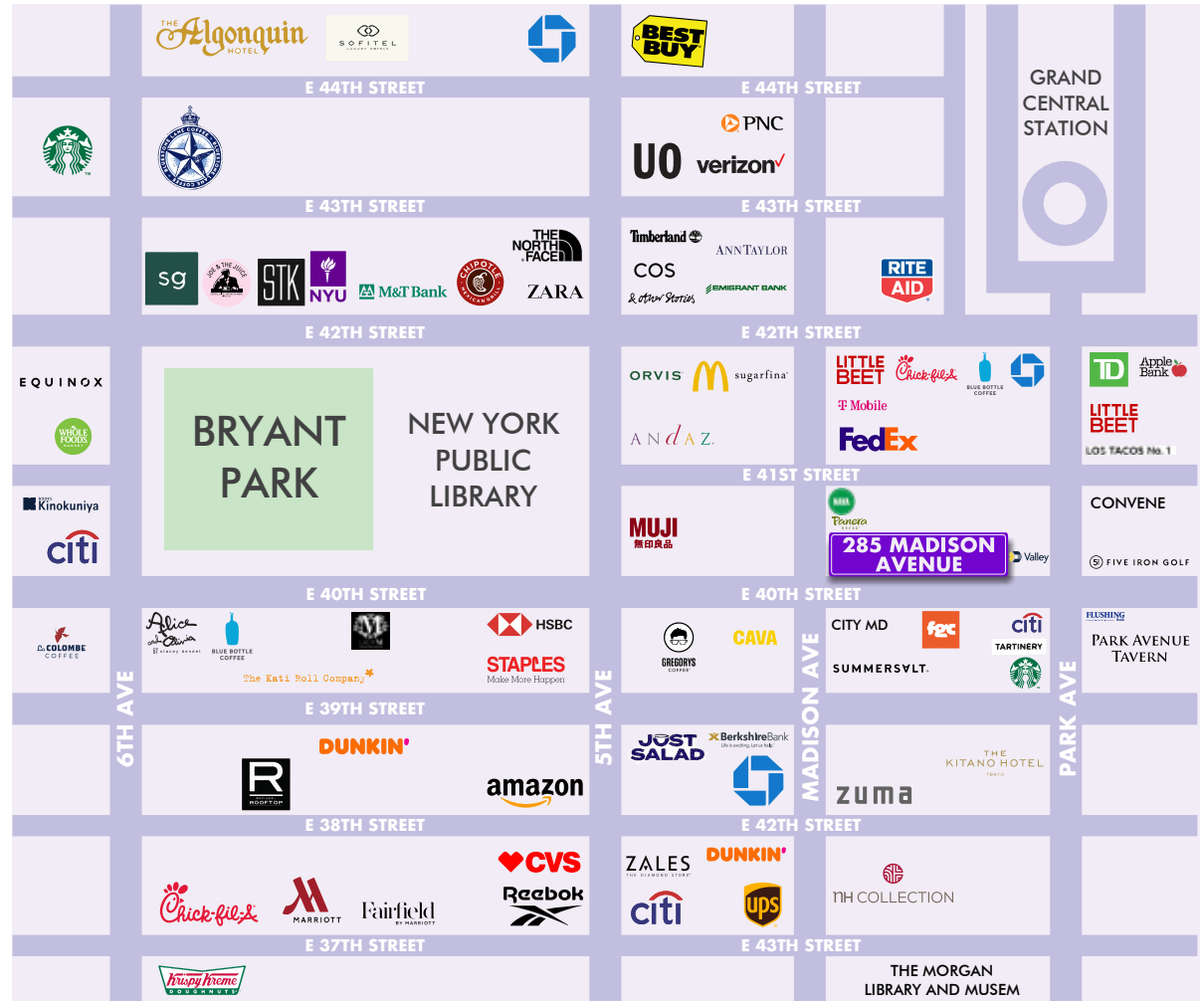
**B D F M 7** @ BRYANT PARK

**4 5 6 7 S** @ GRAND CENTRAL

## NEIGHBORING RETAIL TENANTS

- Naya
- Panera
- Summer Salt
- Library Hotel
- Cava
- Chick Fil A
- Andaz Hotel
- Gregory's Coffee
- Whole Foods
- Blue Bottle
- Los Tacos No. 1
- Starbucks
- FedEx
- Zara
- Muji
- Apple Bank
- HSBC
- TD Bank
- Chase Bank
- Citibank
- Flushing Bank

This information has been obtained from sources believed reliable, but has not been verified for accuracy or completeness. You should conduct a careful, independent investigation of the property and verify all information. Any reliance on this information is solely at your own risk. MONA and the MONA logo are service marks of Mona Retail Holdings LLC. All other marks displayed on this document are the property of their respective owners, and the use of such logos does not imply any affiliation with or endorsement of Mona Retail Holdings LLC.



**BRANDON SINGER**

BRANDON@RETAILBYMONA.COM  
888-421-6662

**MARISA SIMKIN**

MARISA@RETAILBYMONA.COM  
408-482-0064

**SUZANNE BERNSTOCK**

SUZANNE@RETAILBYMONA.COM  
610-903-2207