

# 36 WEST 22ND STREET

Between Fifth and Sixth Avenues  
Flatiron, Manhattan

**mona**  
EXCLUSIVE RETAIL LEASING AGENT

**FLATIRON SPACE FOR LEASE OR PURCHASE**



# FLOOR PLAN

**36 WEST  
22ND STREET**

## **GROUND FLOOR:**

Size: Approximately 1,882 SF  
Ceiling Height: 12 FT

## **LOWER LEVEL:**

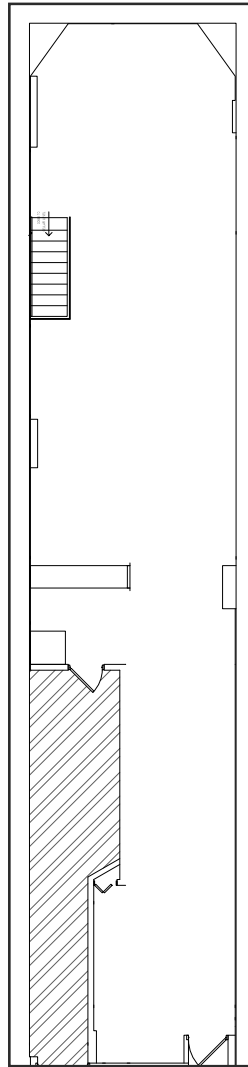
Size: Approximately 1,040 SF  
Ceiling Height: 8 FT

## **FRONTAGE:**

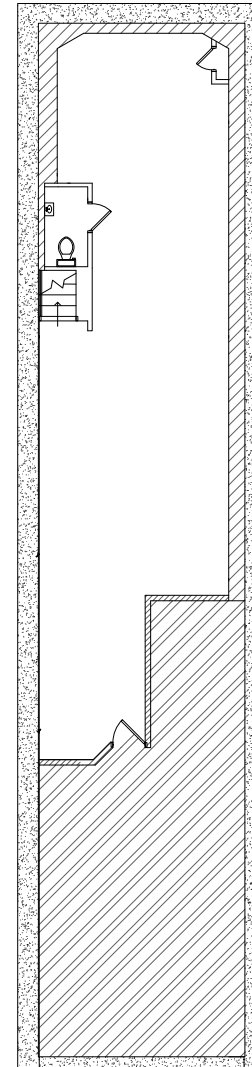
Approximately 15 FT on 22nd Street

## **POSSESSION:**

Immediate



**GROUND FLOOR**



**LOWER LEVEL**

**mona**

**BRANDON SINGER**

BRANDON@RETAILBYMONA.COM  
888-421-6662

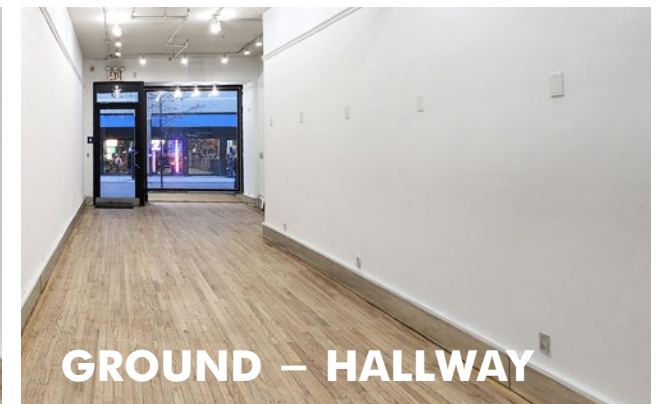
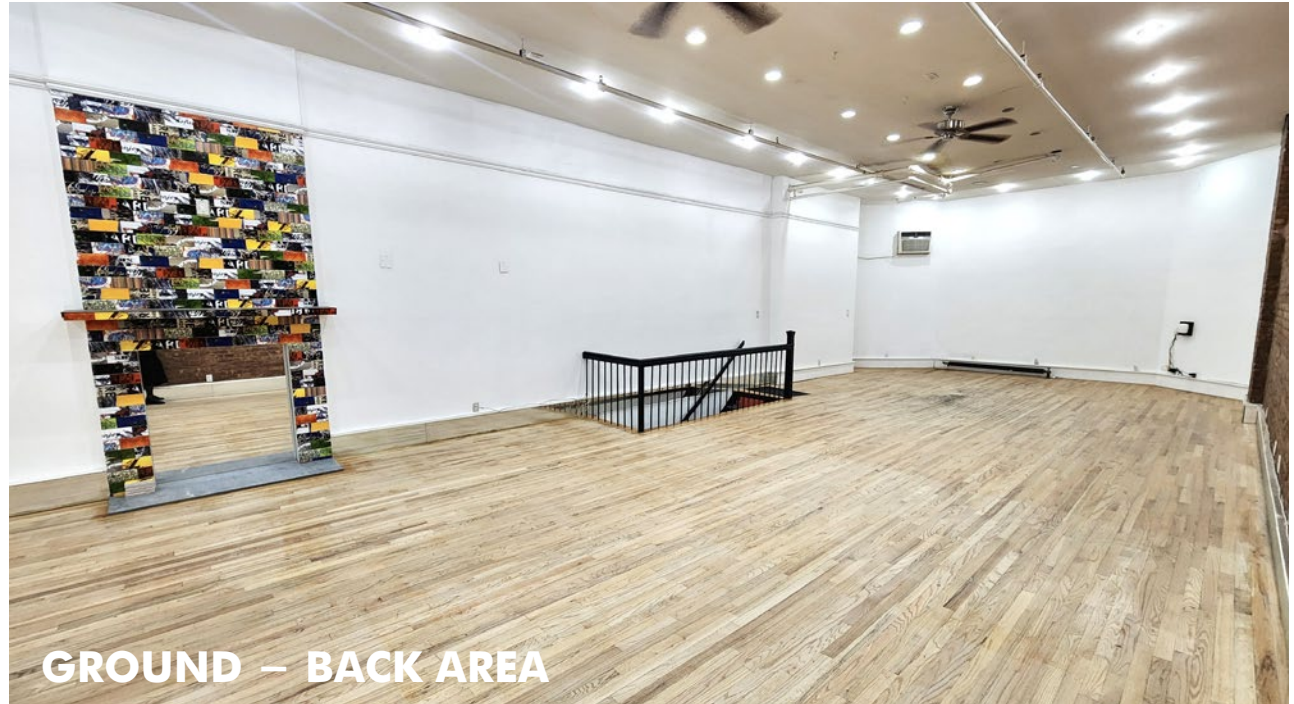
**SUNNY WOO**

SUNNY@RETAILBYMONA.COM  
646-295-0348

# HIGHLIGHTS

**36 WEST  
22ND STREET**

- For Lease or Sale - Great user investment.
- Located on a prime Flatiron District street.
- Surrounded by national & international retailers, restaurants, & affluent residents.
- Large storefront glass windows.
- Clean and comforting interior with exposed brick wall and wooden flooring.
- Column-free open space.
- Steps from the Flatiron Building and Madison Square Park.



**mona**

**BRANDON SINGER**

BRANDON@RETAILBYMONA.COM  
888-421-6662

**SUNNY WOO**

SUNNY@RETAILBYMONA.COM  
646-295-0348

# MAP

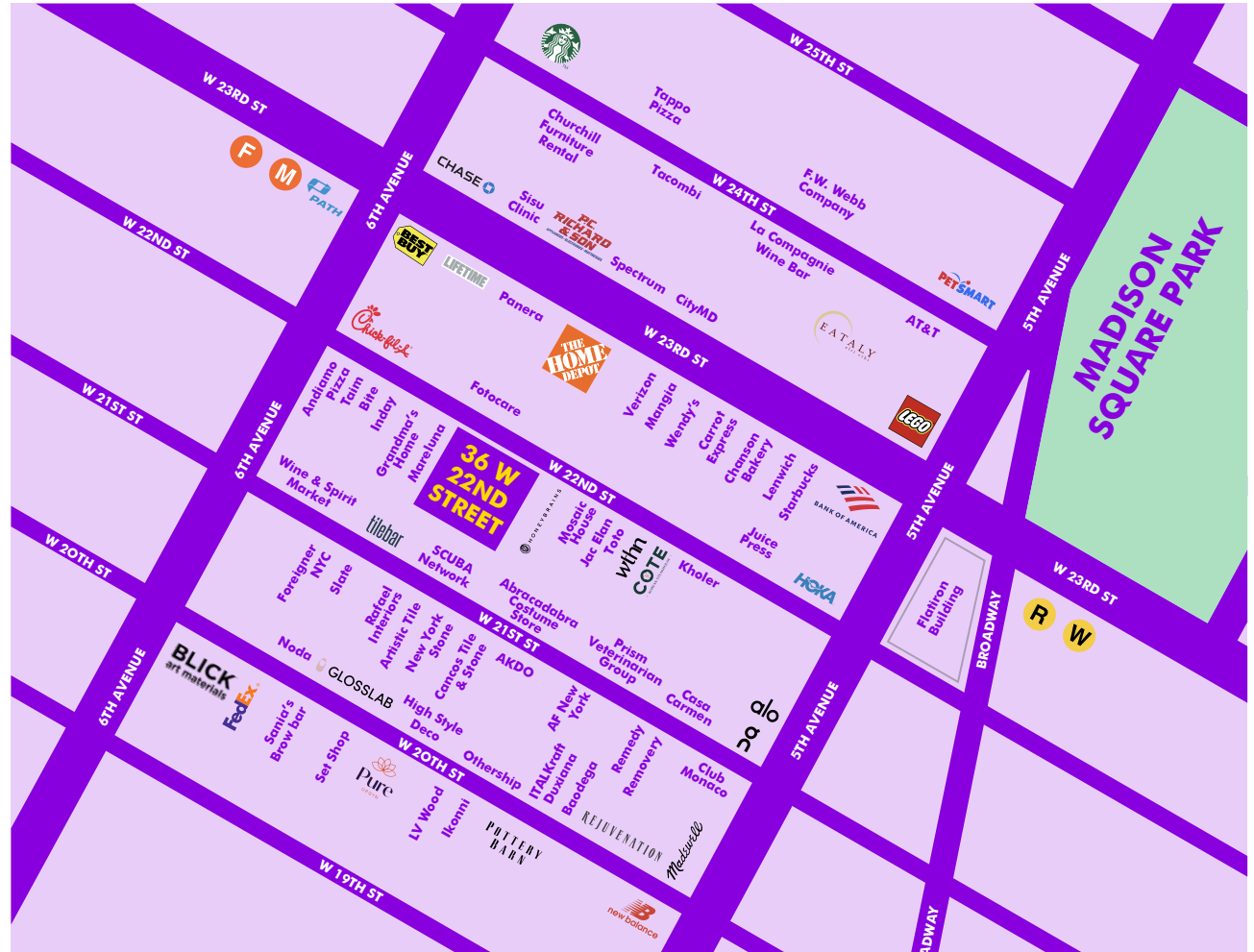
**36 WEST  
22ND STREET**

## NEARBY PUBLIC TRANSIT:

- R** **W** @23rd Street
- F** **M** @23rd Street
- PATH** @23rd Street

## SELECT NEARBY RETAIL TENANTS:

- The Home Depot
- Kholer
- Toto
- Hoka
- Best Buy
- Eataly
- Lego Store
- P.C. Richards & Son
- Alo
- On



This information has been obtained from sources believed reliable, but has not been verified for accuracy or completeness. You should conduct a careful, independent investigation of the property and verify all information. Any reliance on this information is solely at your own risk. MONA and the MONA logo are service marks of Mona Retail Holdings LLC. All other marks displayed on this document are the property of their respective owners, and the use of such logos does not imply any affiliation with or endorsement of Mona Retail Holdings LLC.

**mona**

**BRANDON SINGER**

BRANDON@RETAILBYMONA.COM  
888-421-6662

**SUNNY WOO**

SUNNY@RETAILBYMONA.COM  
646-295-0348