

36 WEST 22ND STREET

Between Fifth and Sixth Avenues
Flatiron, Manhattan

mona
EXCLUSIVE RETAIL LEASING AGENT

FLATIRON SPACE FOR LEASE OR PURCHASE



FLOOR PLAN

**36 WEST
22ND STREET**

GROUND FLOOR:

Size: Approximately 1,882 SF
Ceiling Height: 12 FT

LOWER LEVEL:

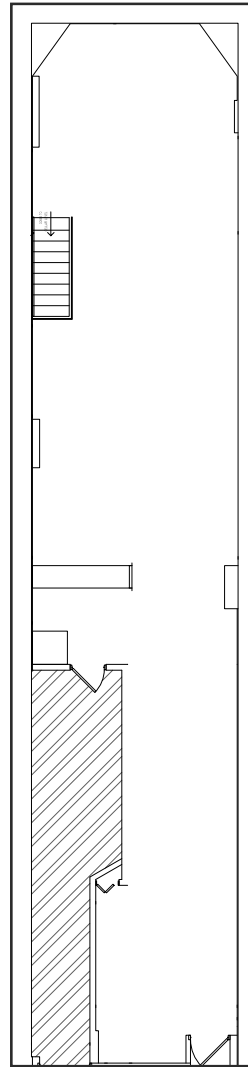
Size: Approximately 1,040 SF
Ceiling Height: 8 FT

FRONTAGE:

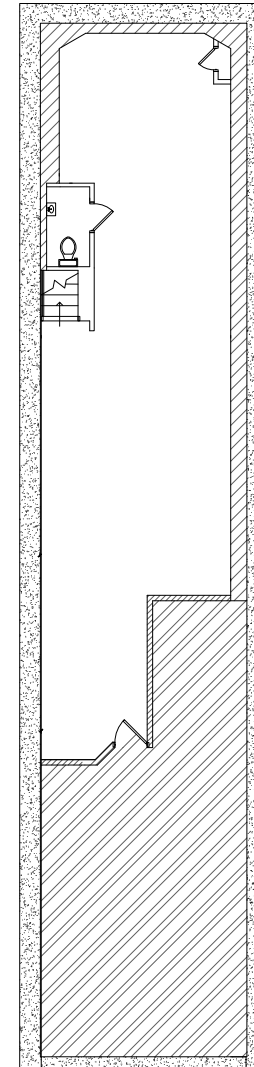
Approximately 15 FT on 22nd Street

POSSESSION:

Immediate



GROUND FLOOR



LOWER LEVEL

mona

BRANDON SINGER

BRANDON@RETAILBYMONA.COM
888-421-6662

JASON LLOYD

JASON@RETAILBYMONA.COM
917-312-8836

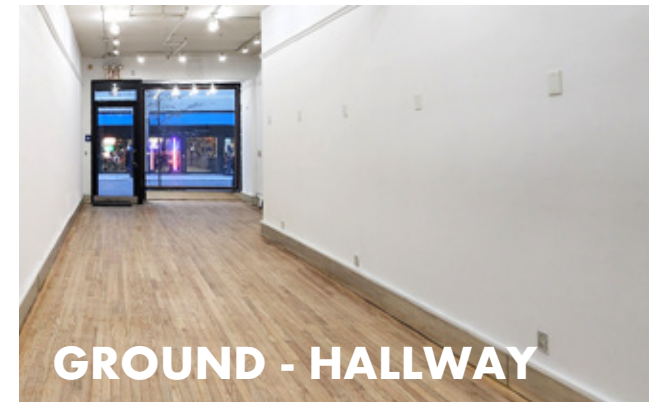
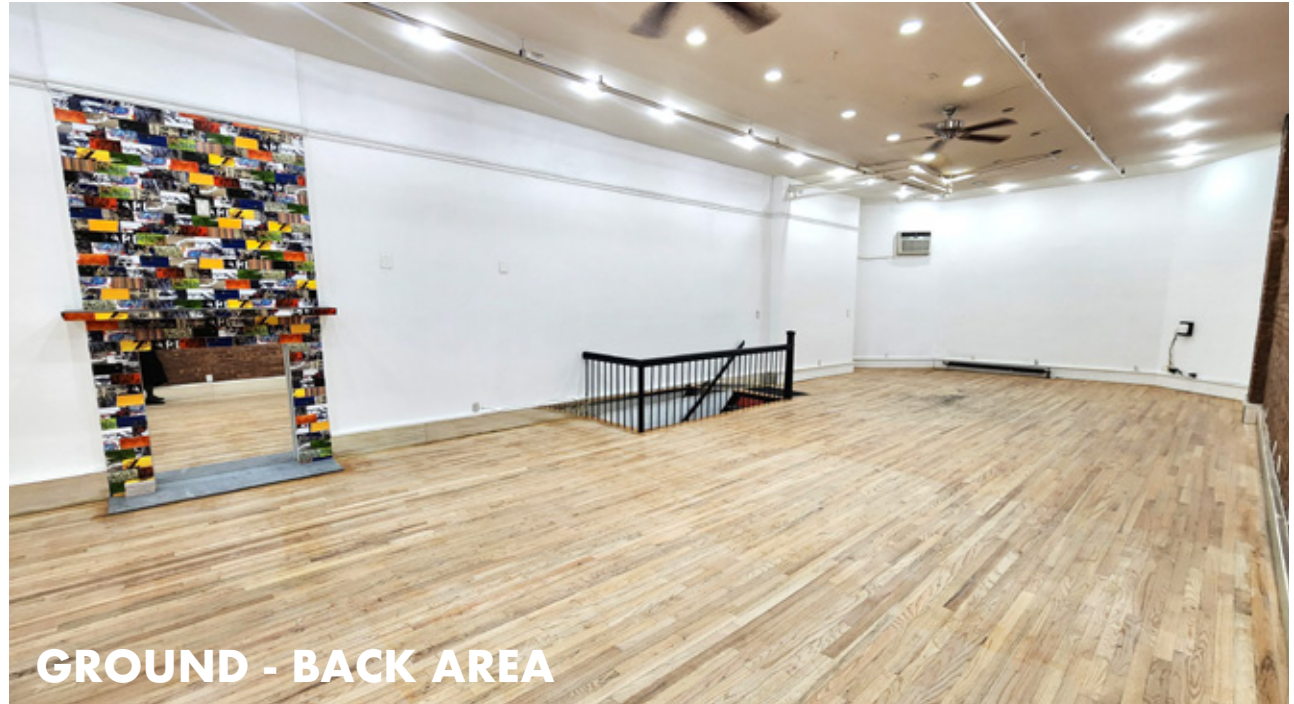
SUNNY WOO

SUNNY@RETAILBYMONA.COM
646-295-0348

HIGHLIGHTS

**36 WEST
22ND STREET**

- For Lease or Sale - Great user investment.
- Located on a prime Flatiron District street.
- Surrounded by national and international retailers, restaurants, and affluent residents.
- Large storefront glass windows.
- Clean and comforting interior with exposed brick wall and wooden flooring.
- Column-free open space.
- Steps from the Flatiron Building and Madison Square Park.



mona

BRANDON SINGER

BRANDON@RETAILBYMONA.COM
888-421-6662

JASON LLOYD

JASON@RETAILBYMONA.COM
917-312-8836




SUNNY WOO

SUNNY@RETAILBYMONA.COM
646-295-0348

MAP

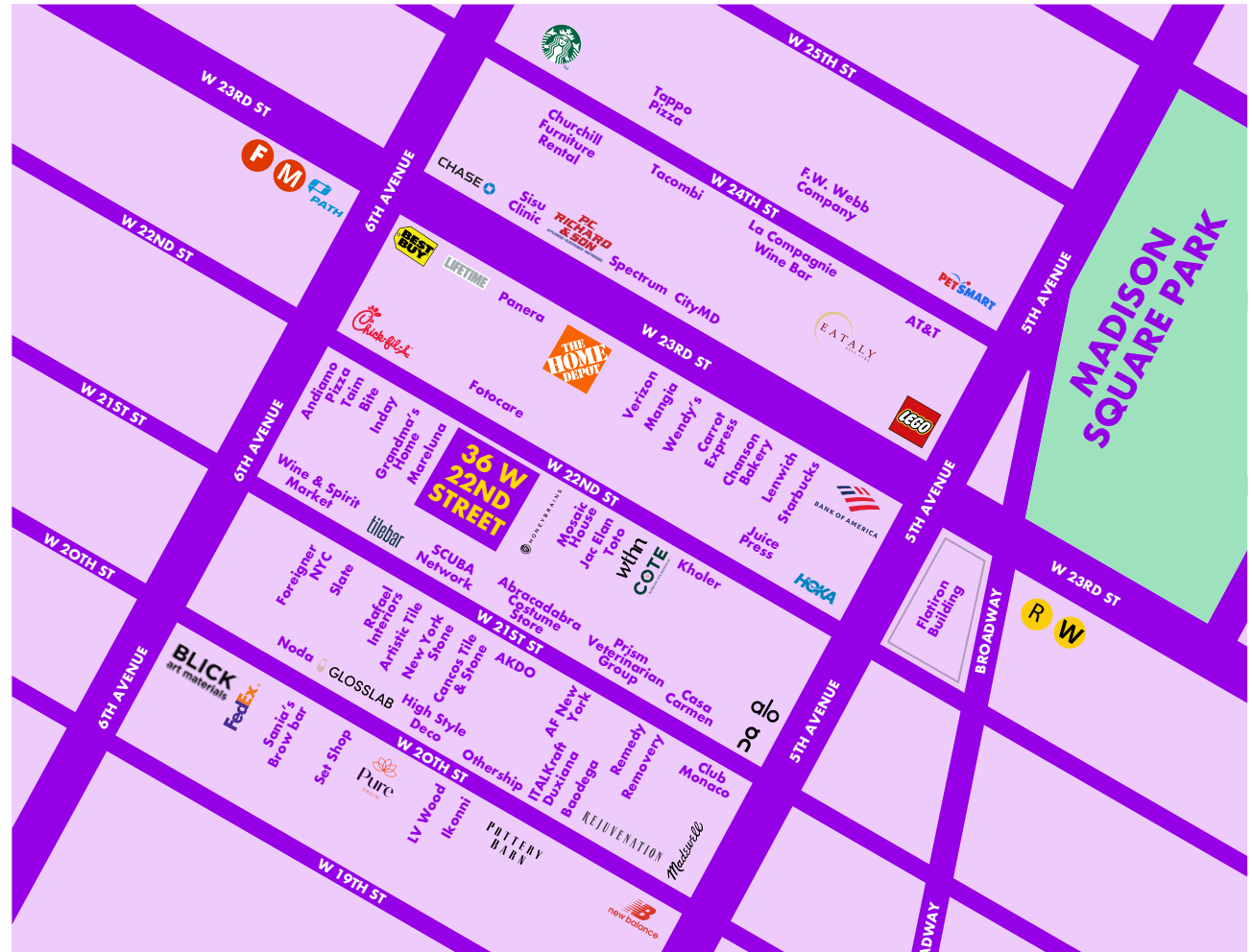
36 WEST 22ND STREET

NEARBY PUBLIC TRANSIT:

-  @ 23rd Street
-  23rd Street
-  @ 23rd Street

SELECT NEARBY RETAIL TENANTS:

- The Home Depot
- Kholer
- Toto
- Hoka
- Best Buy
- Eataly
- Lego Store
- P.C. Richards & Son
- Alo
- On



This information has been obtained from sources believed reliable, but has not been verified for accuracy or completeness. You should conduct a careful, independent investigation of the property and verify all information. Any reliance on this information is solely at your own risk. MONA and the MONA logo are service marks of Mona Retail Holdings LLC. All other marks displayed on this document are the property of their respective owners, and the use of such logos does not imply any affiliation with or endorsement of Mona Retail Holdings LLC.



BRANDON SINGER

BRANDON@RETAILBYMONA.COM
888-421-6662

JASON LLOYD

JASON@RETAILBYMONA.COM
917-312-8836

SUNNY WOO

SUNNY@RETAILBYMONA.COM
646-295-0348