



# 121

**FULTON STREET -  
SECOND FLOOR**

---

Financial District, Manhattan

**mona**  
EXCLUSIVE RETAIL LEASING AGENT



# INTERIOR PHOTOS

121 FULTON STREET  
SECOND FLOOR



**mona**  
EXCLUSIVE RETAIL LEASING AGENT

**BRANDON SINGER**

BRANDON@RETAILBYMONA.COM  
888-421-6662

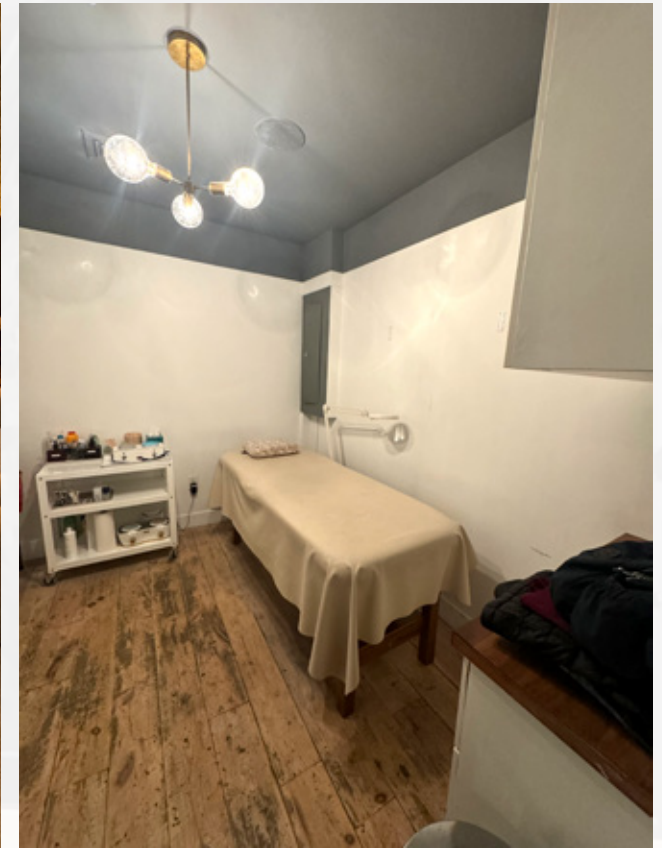
**KIM LEVANDOVSKY**

KIM@RETAILBYMONA.COM  
347-431-5354



# INTERIOR PHOTOS

121 FULTON STREET  
SECOND FLOOR



**mona**  
EXCLUSIVE RETAIL LEASING AGENT

**BRANDON SINGER**

BRANDON@RETAILBYMONA.COM  
888-421-6662

**KIM LEVANDOVSKY**

KIM@RETAILBYMONA.COM  
347-431-5354



# HIGHLIGHTS

121 FULTON STREET  
SECOND FLOOR

## SECOND FLOOR 2,600 SF

- Second Floor retail space in a dense residential and commercial neighborhood.
- Turnkey spa with beautiful finishes.
- Second floor goes block-through with visibility on both Fulton Street and Ann Street.
- High ceilings.
- Direct elevator access.
- Steps from the Fulton Street subway station, which serves 27.7 million passengers annually.
- Close proximity to major traffic drivers like The New York Stock Exchange, City Hall, The National September 11 Memorial Museum, The Oculus, and Westfield One World Trade Center.
- Open to all logical uses.



**mona**  
EXCLUSIVE RETAIL LEASING AGENT

**BRANDON SINGER**

BRANDON@RETAILBYMONA.COM  
888-421-6662

**KIM LEVANDOVSKY**

KIM@RETAILBYMONA.COM  
347-431-5354

# MAP

## 121 FULTON STREET SECOND FLOOR

### NEARBY PUBLIC TRANSIT:



### SELECT NEARBY RETAIL TENANTS:

- Blue Haven
- Zara
- Chipotle
- Chick-fil-A
- Shake Shack
- Sephora
- Poke Bowl
- CVS
- Starbucks
- Potbelly
- Dunkin'
- Wendy's
- Blink Fitness
- Joe's Pizza
- Zuckers Bagels
- Jersey Mike's
- Mazeh
- Baked By Melissa
- Blank Street Coffee
- Jimmy John's
- Pace University
- 7th Street Burger

### SELECT WESTFIELD ONE WORLD TRADE CENTER TENANTS:

- Apple
- Eataty
- H&M
- Gloveworx
- Casper



This information has been obtained from sources believed reliable, but has not been verified for accuracy or completeness. You should conduct a careful, independent investigation of the property and verify all information. Any reliance on this information is solely at your own risk. MONA and the MONA logo are service marks of Mona Retail Holdings LLC. All other marks displayed on this document are the property of their respective owners, and the use of such logos does not imply any affiliation with or endorsement of Mona Retail Holdings LLC.



### BRANDON SINGER

BRANDON@RETAILBYMONA.COM  
888-421-6662

### KIM LEVANDOVSKY

KIM@RETAILBYMONA.COM  
347-431-5354