



141 EAST 55TH STREET

NORTH BLOCK BETWEEN LEXINGTON & 3RD AVENUES
MIDTOWN EAST, MANHATTAN

RETAIL FOR LEASE ON HIGH-TRAFFIC SIDE STREET



HUBBNYC™

HUBBNYC is a privately held, well-capitalized New York City real estate operating company. Since its inception in 2011, the Company has acquired over 80 residential, retail and mixed-use properties in New York City. HUBBNYC is a long-term owner with over 100 retail storefronts under management. HUBBNYC has an in-house professional management team that is dedicated to a tenant-centered service model to ensure the best outcome for our retail tenants.

mona

EXCLUSIVE RETAIL LEASING AGENT

SPACE DETAILS

141 EAST 55TH STREET

GROUND FLOOR:

1,241 SF

FRONTAGE:

21 FT ON EAST 55TH STREET

POSSESSION:

IMMEDIATE

HIGHLIGHTS

- Second generation salon space in Midtown East.
- High traffic corridor ideal for all dry uses.
- At the base of an 87-unit condominium.
- All non-vented uses considered.

NEIGHBORS

Sherwin-Williams, Kati Shop, Glaze Teriyaki, Oakberry Acai, Starbucks, Le Cafe, Just Salad, Maman, Shun Lee Palace, Dunkin, Sweetgreen, and Juice Generation.



mona
EXCLUSIVE RETAIL LEASING AGENT

JOHN DIGANGI

JOHN@RETAILBYMONA.COM
(516) 776-0664

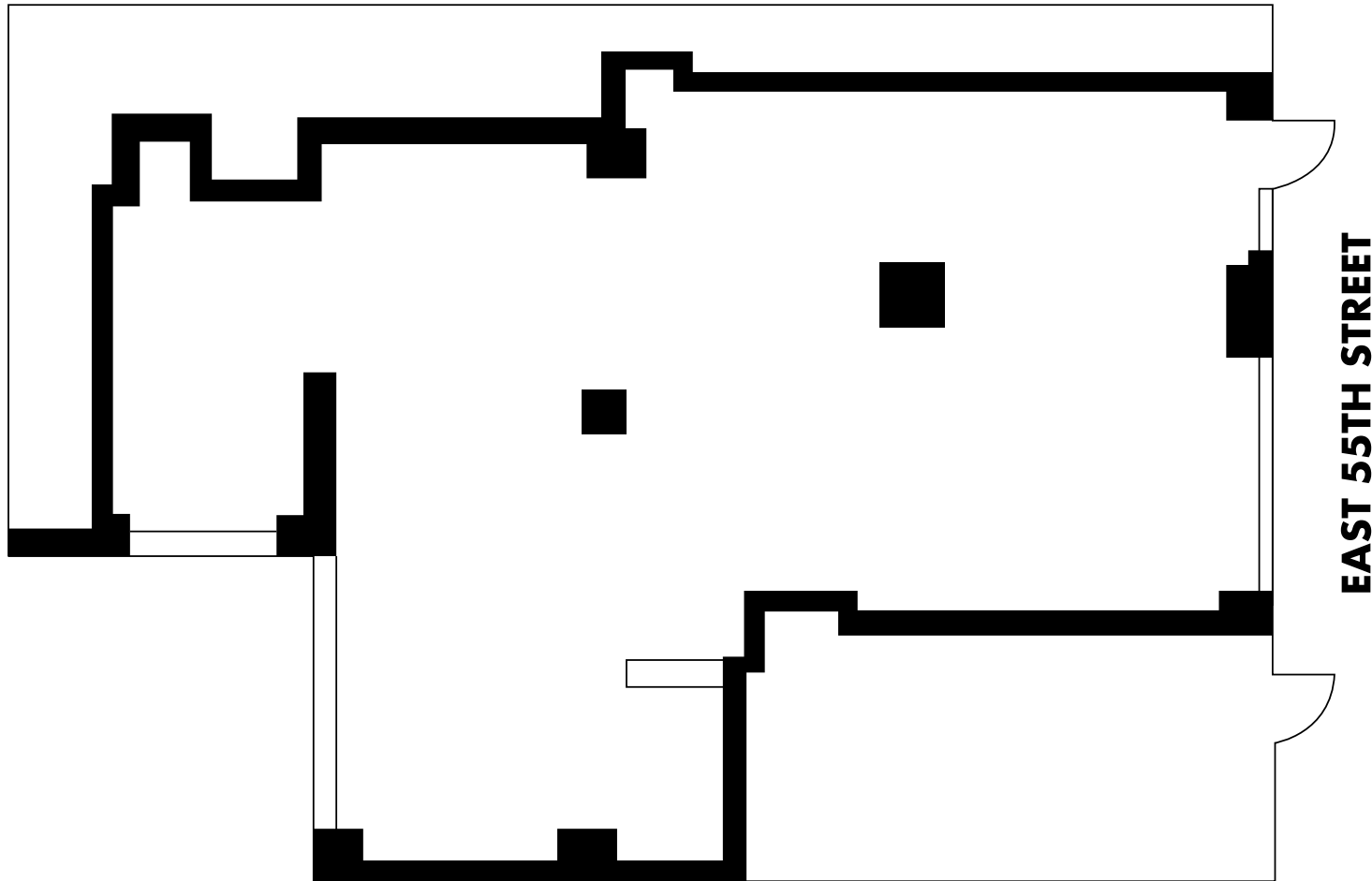
MANU WENDUM

MANU@RETAILBYMONA.COM
(918) 331-6238


HUBBNYC™

FLOOR PLAN

141 EAST 55TH STREET



This information has been obtained from sources believed reliable, but has not been verified for accuracy or completeness. You should conduct a careful, independent investigation of the property and verify all information. Any reliance on this information is solely at your own risk. MONA and the MONA logo are service marks of Mona Retail Holdings LLC. All other marks displayed on this document are the property of their respective owners, and the use of such logos does not imply any affiliation with or endorsement of Mona Retail Holdings LLC.



JOHN DIGANGI

JOHN@RETAILBYMONA.COM
(516) 776-0664

MANU WENDUM

MANU@RETAILBYMONA.COM
(918) 331-6238



HUBB NYC

MAP

141 EAST 55TH STREET

Café Olympia New Development	Uni Wax Just Salad Ashley	Crabhouse Allure Day Spa	141 EAST 55TH STREET	UV Nail & Spa Shun Lee Palace	Darbar Teppen Ramen	The Naked Pig Dunkin Donuts T-Mobile	One Medical P.J. Clarke's
EAST 55TH STREET							
Central Synagogue Dunkin Donuts DosToros	Starbucks Neuhaus Oakberry Chop & Go Glaze Teriyaki	Barchi Buns FedEx	Little L'Entrecote Steamed Venise Le Relais de	Hotel Blue Angel Omar's Mediterranea	Hill Cleaners Kizuna Hair	Kati Shop Bank of America Chipotle	USPostal Service Tao
EAST 54TH STREET							
Inday Shake Shack CVS	St. Peter's Church Avo The Hugh	TMPL The Atrium	Jumieka NYC	Teranga	The Boardroom Gregorys Coffee TD Bank	Wolfgang's Epicerie Boulud	

This information has been obtained from sources believed reliable, but has not been verified for accuracy or completeness. You should conduct a careful, independent investigation of the property and verify all information. Any reliance on this information is solely at your own risk. MONA and the MONA logo are service marks of Mona Retail Holding s LLC. All other marks displayed on this document are the property of their respective owners, and the use of such logos does not imply any affiliation with or endorsement of Mona Retail Holdings LLC.



JOHN DIGANGI

JOHN@RETAILBYMONA.COM
(516) 776-0664

MANU WENDUM

MANU@RETAILBYMONA.COM
(918) 331-6238

