

PRIME NOMAD RESTAURANT OPPORTUNITY

255 FIFTH AVENUE

BETWEEN 28TH STREET & 29TH STREET

mona
EXCLUSIVE RETAIL LEASING AGENT



FLOOR PLAN & HIGHLIGHTS 255 FIFTH AVENUE

GROUND LEVEL

4,034 SF

LOWER LEVEL

1,602 SF

SECOND LEVEL (OPTIONAL)

4,124 SF

CEILING HEIGHTS

GROUND LEVEL: 9 FT 3 IN

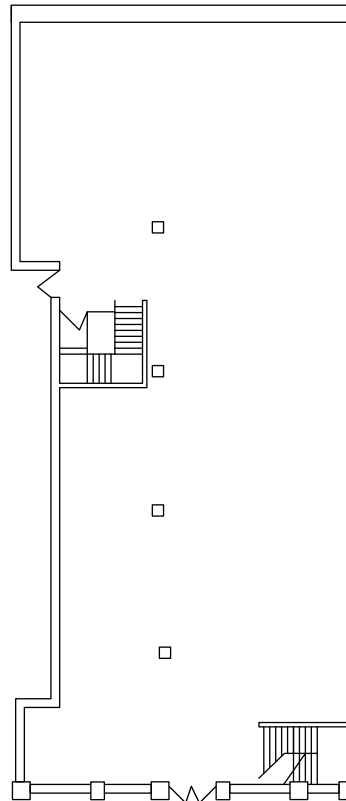
LOWER LEVEL: 7 FT 4 IN

SECOND LEVEL: 9 FT 6 IN

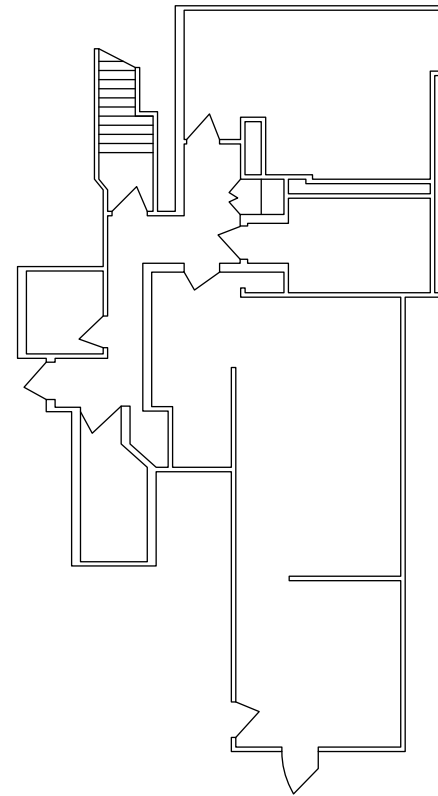
HIGHLIGHTS

- Previously Ben & Jack's Steakhouse.
- Restaurant infrastructure in place, including venting and sufficient gas and electric service.
- Steps from the newly developed Fifth Avenue Hotel, Café Carmellini, and The Portrait Bar.
- Dynamic cotenancy consisting of high-end residential, hotels, and design & tech firms.
- All uses and logical divisions considered.

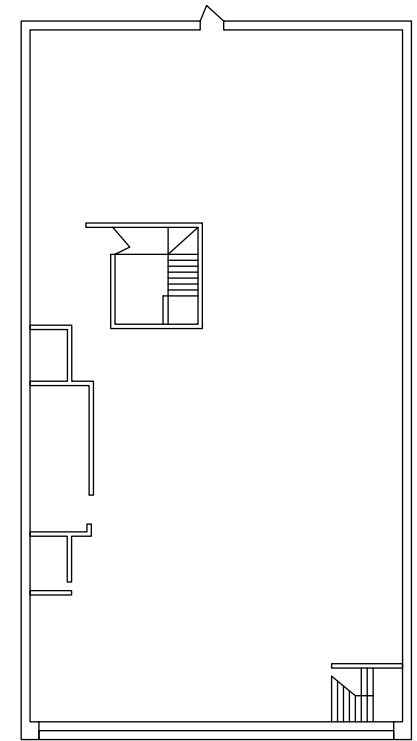
GROUND LEVEL



LOWER LEVEL



SECOND LEVEL



mona

ALEX TURBOFF

ALEX@RETAILBYMONA.COM
(917) 406-1269

MARISA SIMKIN

MARISA@RETAILBYMONA.COM
(408) 482-0064

WILLIAM ISORE

WILLIAM@RETAILBYMONA.COM
(202) 714-4699

MAP

NEARBY PUBLIC TRANSIT

R W @ 28TH STREET

6 @ 28TH STREET

SELECT NEARBY RETAIL TENANTS

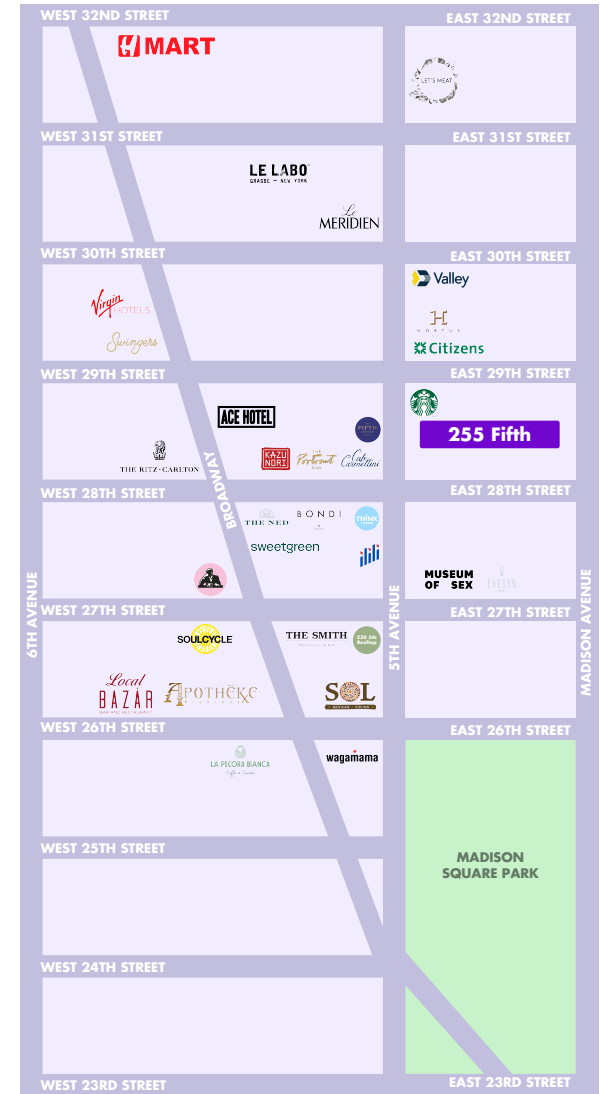
- LETS MEAT BBQ
- THINK COFFEE
- ILILI
- MUSEUM OF SEX
- SOL MEXICANA
- H-MART
- SWINGERS
- KAZUNORI
- BONDI SUSHI
- THE SMITH
- APOTHEKE
- LA PECORA BIANCA
- WAGAMAMA
- BAZAR
- SOUL CYCLE
- THE PORTRAIT BAR
- LE LABO
- CAFE CARMELLINI
- SWEET GREEN
- JOE AND THE JUICE
- STARBUCKS
- CITIZENS BANK
- VALLEY NATIONAL BANK

SELECT NEARBY HOTELS

- LE MERIDIEN HOTEL
- VIRGIN HOTEL
- ACE HOTEL
- THE NED NOMAD
- THE EVELYN
- 5TH AVENUE HOTEL
- RITZ CARLTON

**WALKING DISTANCE FROM
MADISON SQUARE PARK
AND THE NOMAD PIAZZA**

255 FIFTH AVENUE



This information has been obtained from sources believed reliable, but has not been verified for accuracy or completeness. You should conduct a careful, independent investigation of the property and verify all information. Any reliance on this information is solely at your own risk. MONA and the MONA logo are service marks of Mona Retail Holdings LLC. All other marks displayed on this document are the property of their respective owners, and the use of such logos does not imply any affiliation with or endorsement of Mona Retail Holdings LLC.

mona

ALEX TURBOFF

ALEX@RETAILBYMONA.COM
(917) 406-1269

MARISA SIMKIN

MARISA@RETAILBYMONA.COM
(408) 482-0064

WILLIAM ISORE

WILLIAM@RETAILBYMONA.COM
(202) 714-4699