

UPPER WEST SIDE

HIGHLY VISIBLE RETAIL OPPORTUNITY  
ACROSS FROM CENTRAL PARK

NORTHWEST CORNER OF 62ND STREET & CENTRAL PARK WEST

25  
CENTRAL  
PARK  
WEST



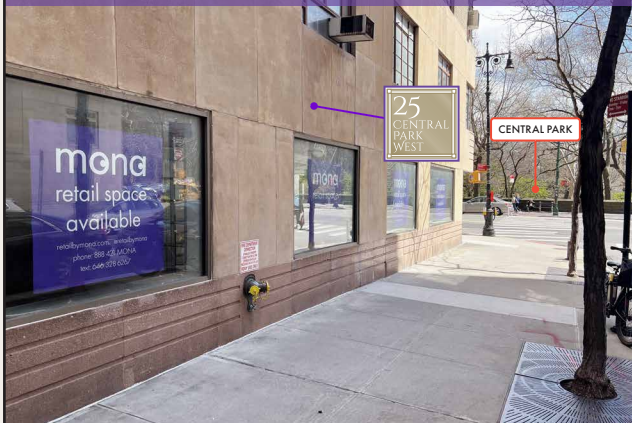
NEW YORK

mona

## PROPERTY HIGHLIGHTS

- Steps from Columbus Circle and Lincoln Center.
- Unique opportunity to be directly on Central Park.
  - All non-venting uses considered.
  - 422 Residential Units above.
  - Divisions considered.

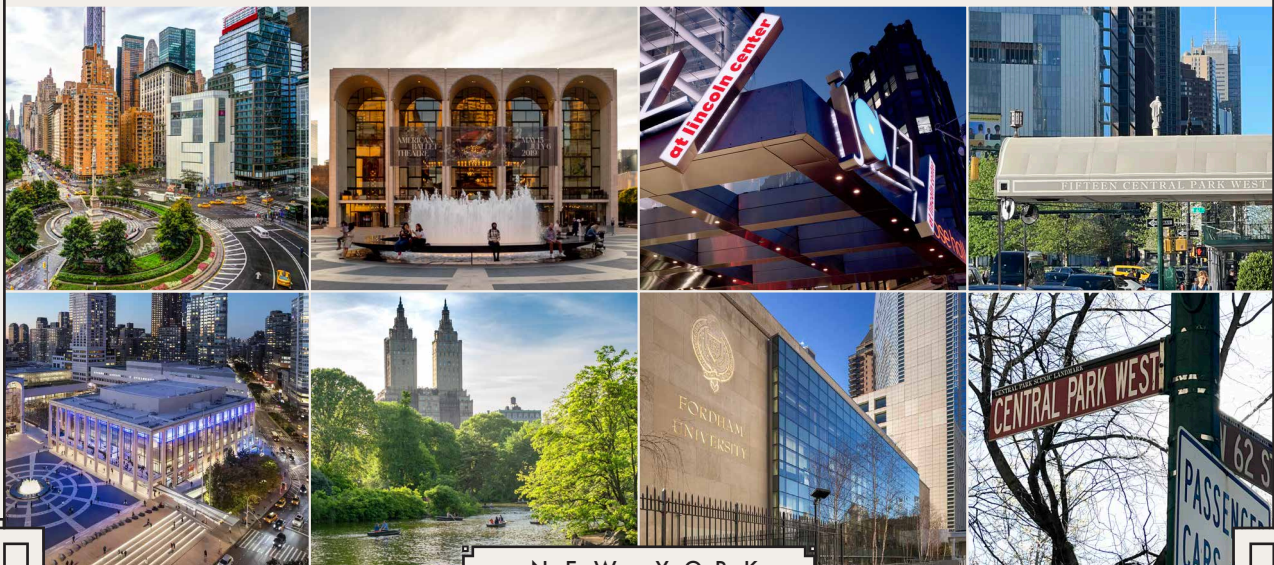
▶ VIEW EAST



▶ VIEW SOUTH



THE SPACE SITS DIRECTLY ACROSS FROM 15 CENTRAL PARK WEST, ONE OF THE HIGHEST VALUED RESIDENTIAL CONDOMINIUMS DEVELOPED IN NORTH AMERICA.



25 CENTRAL PARK WEST



NEIGHBORS

WEGMANS (COMING SOON)  
 THE SMITH  
 SEPHORA  
 ROSA MEXICANO  
 BREADS BAKERY

BAR BOULUD  
 CAFÉ FIORELLO  
 THE EMPIRE  
 TARGET  
 WEST ELM

SHOPS AT COLUMBUS CIRCLE  
 THE EMPIRE HOTEL  
 FREDERICK P ROSE HALL  
 FORDHAM UNIVERSITY  
 MANDARIN ORIENTAL

NEARBY PUBLIC TRANSIT



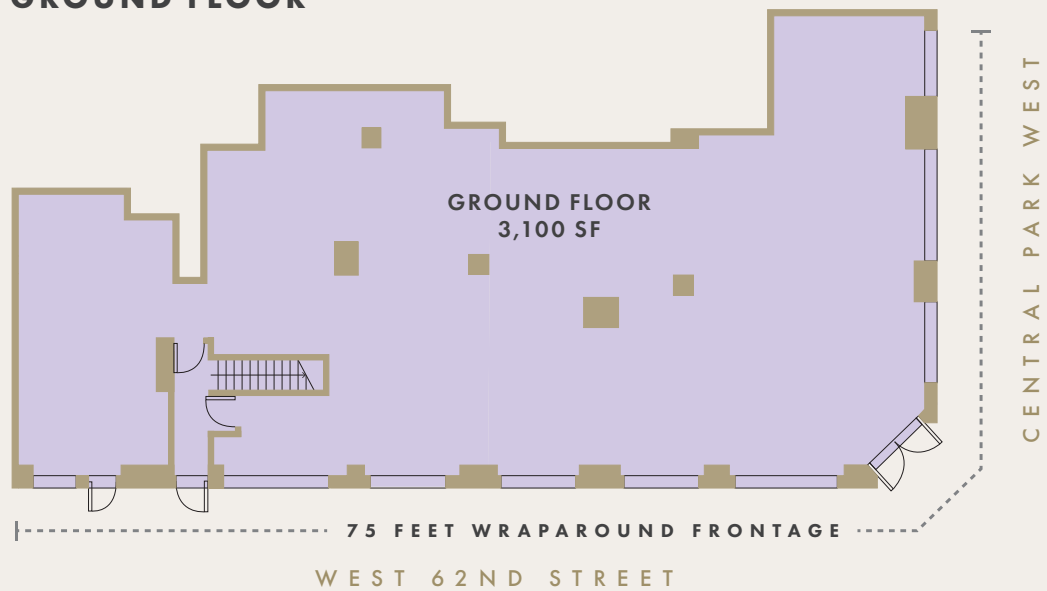


## SPACE DETAILS

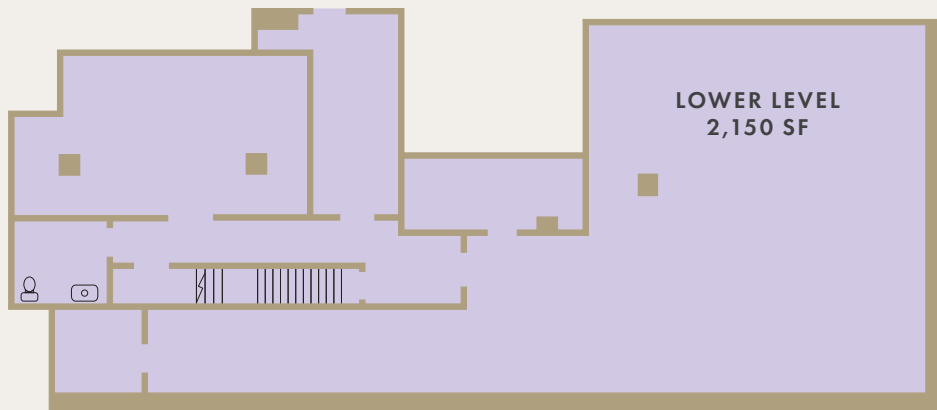
GROUND FLOOR: 3,100 SF • LOWER LEVEL: 2,150 SF

CEILING HEIGHT: 10 FT ON GROUND FLOOR  
FRONTAGE: 75' OF WRAPAROUND FRONTAGE  
POSSESSION: IMMEDIATE

### GROUND FLOOR



### LOWER LEVEL



UPPER WEST SIDE



---

**BRANDON L. SINGER**  
**BRANDON@RETAILBYMONA.COM**  
**888 421 6662**

**JASON FRIEDMAN**  
**JASON.FRIEDMAN@RETAILBYMONA.COM**  
**917 399 8952**

**KIM LEVANDOVSKY**  
**KIM@RETAILBYMONA.COM**  
**347 431 5354**

NEW YORK

**mona**