

UPPER WEST SIDE

HIGHLY VISIBLE RETAIL OPPORTUNITY ACROSS FROM CENTRAL PARK

NORTHWEST CORNER OF 62ND STREET & CENTRAL PARK WEST

25
CENTRAL
PARK
WEST



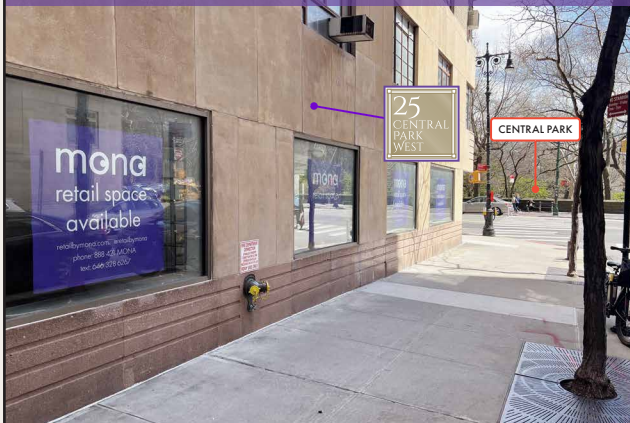
NEW YORK

mona

PROPERTY HIGHLIGHTS

- Steps from Columbus Circle and Lincoln Center.
- Unique opportunity to be directly on Central Park.
 - All non-venting uses considered.
 - 422 Residential Units above.
 - Divisions considered.

► VIEW EAST



► VIEW SOUTH



THE SPACE SITS DIRECTLY ACROSS FROM 15 CENTRAL PARK WEST, ONE OF THE HIGHEST VALUED RESIDENTIAL CONDOMINIUMS DEVELOPED IN NORTH AMERICA.



SPACE DETAILS

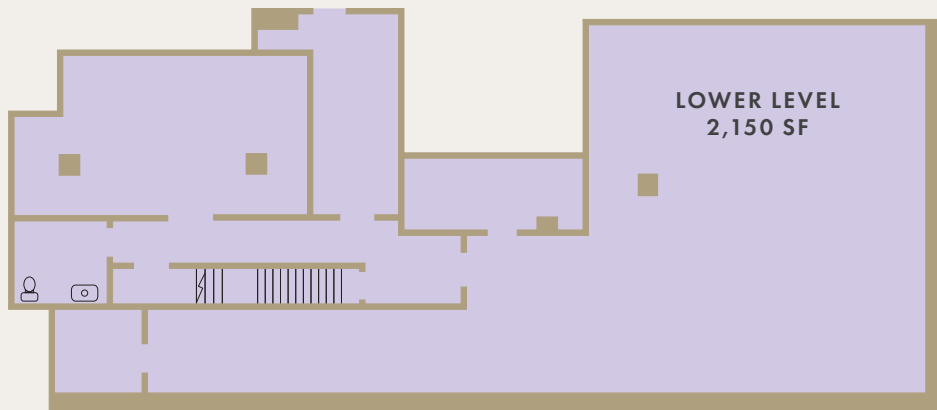
GROUND FLOOR: 3,100 SF • LOWER LEVEL: 2,150 SF

CEILING HEIGHT: 10 FT ON GROUND FLOOR
FRONTAGE: 135' OF WRAPAROUND FRONTAGE
POSSESSION: IMMEDIATE

GROUND FLOOR



LOWER LEVEL



UPPER WEST SIDE



BRANDON L. SINGER
BRANDON@RETAILBYMONA.COM
888 421 6662

JASON FRIEDMAN
JASON.FRIEDMAN@RETAILBYMONA.COM
917 399 8952

KIM LEVANDOVSKY
KIM@RETAILBYMONA.COM
347 431 5354

NEW YORK

mona