

184 LEXINGTON AVENUE

MURRAY HILL, MANHATTAN

WEST BLOCK BETWEEN 31ST & 32ND STREETS



INTERIOR PHOTOS

184 LEXINGTON AVENUE



mona
EXCLUSIVE RETAIL LEASING AGENT

MANU WENDUM

MANU@RETAILBYMONA.COM
917 331 6238

JOHN DIGANGI

JOHN@RETAILBYMONA.COM
516 776 0664

MARISA SIMKIN

MARISA@RETAILBYMONA.COM
408 482 0064

Subject to errors and omissions.

FLOOR PLANS

184 LEXINGTON AVENUE

GROUND FLOOR

1,800 SF

MEZZANINE

600 SF

FRONTAGE

20 FT ON LEXINGTON AVENUE

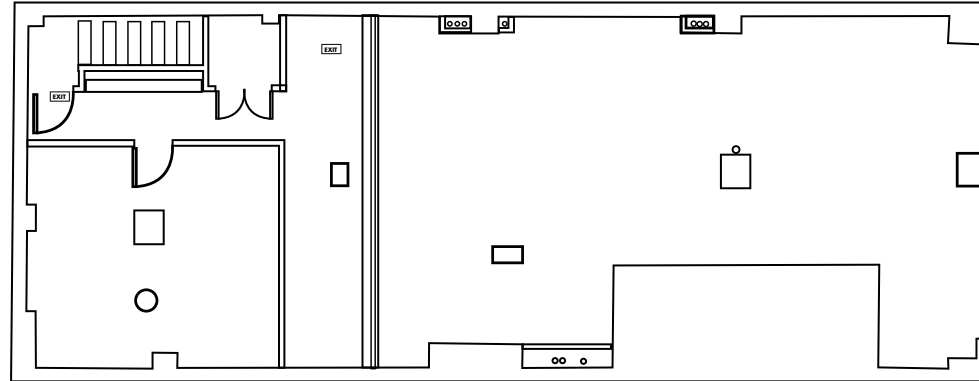
POSSESSION

IMMEDIATE

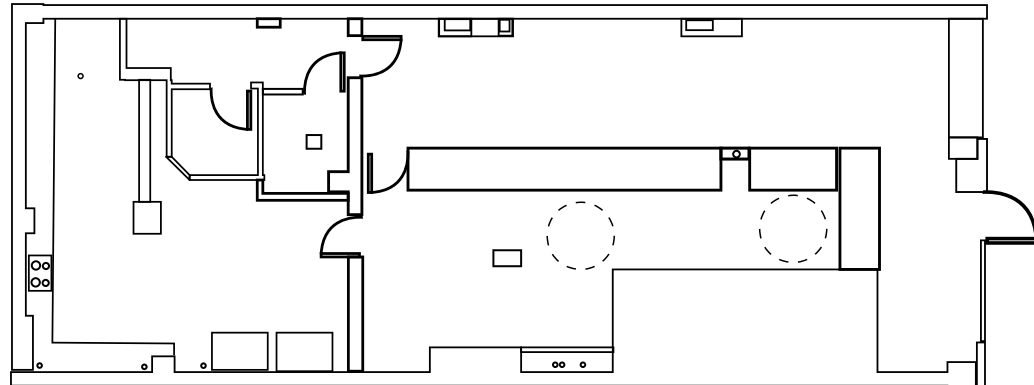
HIGHLIGHTS

- Second generation restaurant space.
- Black iron venting in place.
- 2" gas line in place.
- Directly across from Windsor Court (709 residential units).
- All uses considered.

MEZZANINE FLOOR



FIRST FLOOR



MANU WENDUM

MANU@RETAILBYMONA.COM
917 331 6238

JOHN DIGANGI

JOHN@RETAILBYMONA.COM
516 776 0664

MARISA SIMKIN

MARISA@RETAILBYMONA.COM
408 482 0064

Subject to errors and omissions.

MAP

184 LEXINGTON AVENUE

SELECT NEARBY RETAIL TENANTS:

- PENELOPE
- VEZZO NYC
- NEW YORK DESIGN CENTER
- COCO-MAT
- VINO FINE WINE & SPIRITS
- MIDTOWN NEW YORK DOCTORS
- STARBUCKS
- TRADER JOE'S
- LITTLE RUBY'S
- BANTER
- SIMON'S HARDWARE & BATH
- CLARION HOTEL
- KALUSTYAN'S
- MURRAY HILL DINER
- FELIX ROASTING CO
- YESHIVA UNIVERSITY
- WINDSON COURT
- NEW YORK SPORTS CLUB
- WOLFGANG'S STEAKHOUSE
- CASK BAR & GRILL



This information has been obtained from sources believed reliable, but has not been verified for accuracy or completeness. You should conduct a careful, independent investigation of the property and verify all information. Any reliance on this information is solely at your own risk. MONA and the MONA logo are service marks of Mona Retail Holdings LLC. All other marks displayed on this document are the property of their respective owners, and the use of such logos does not imply any affiliation with or endorsement of Mona Retail Holdings LLC.



MANU WENDUM

MANU@RETAILBYMONA.COM
917 331 6238

JOHN DIGANGI

JOHN@RETAILBYMONA.COM
516 776 0664

MARISA SIMKIN

MARISA@RETAILBYMONA.COM
408 482 0064

Subject to errors and omissions.