

# 1824 2ND AVENUE

AKA 301 EAST 94TH STREET

UPPER EAST SIDE, MANHATTAN

CORNER OF SECOND AVENUE & EAST 94TH STREET

**mona**  
EXCLUSIVE RETAIL LEASING AGENT

# FLOOR PLANS

1824 2ND AVENUE

## GROUND FLOOR

784 SF

## FRONTAGE

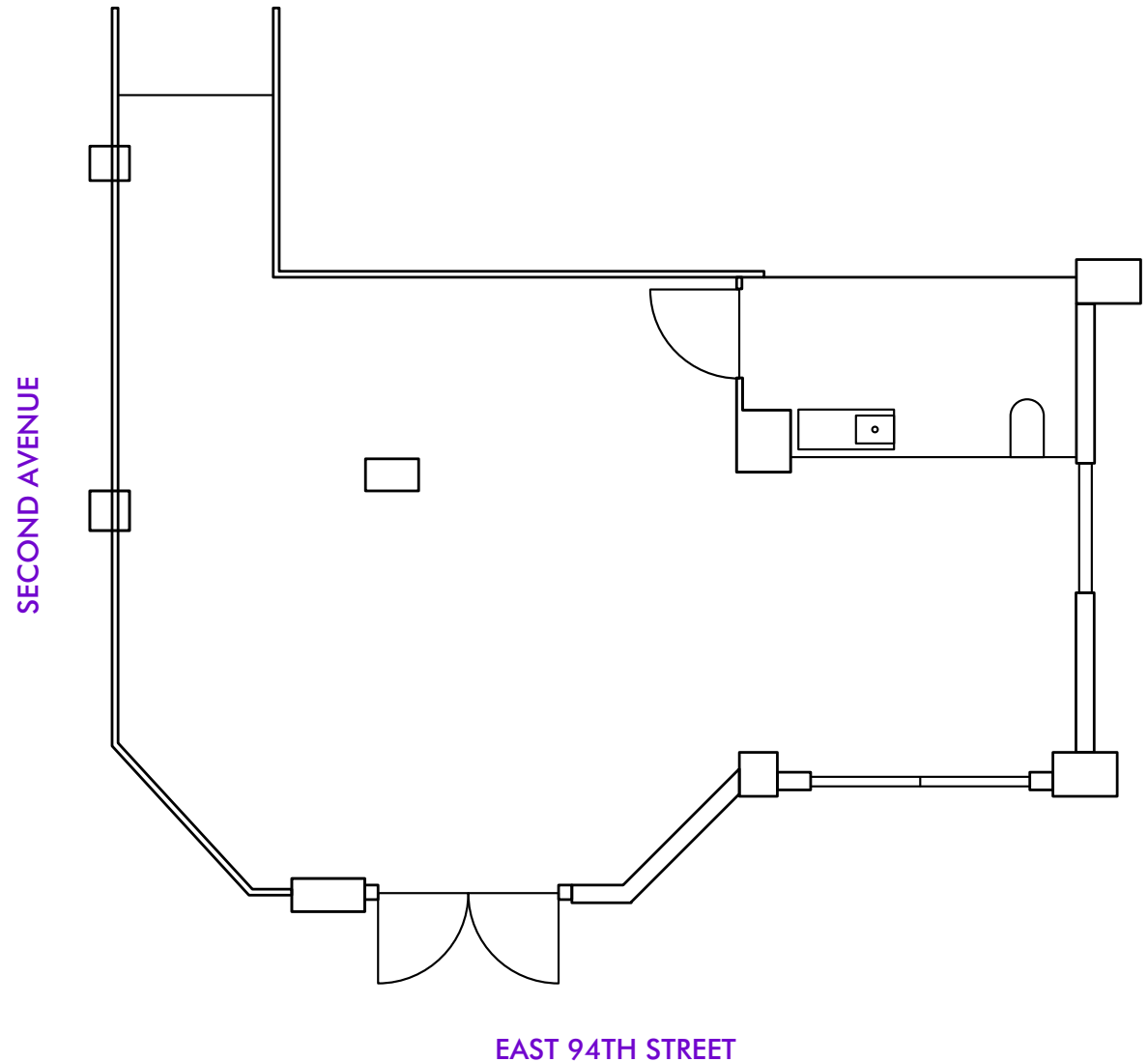
15 FEET ON SECOND AVENUE

## POSSESSION

IMMEDIATE

## HIGHLIGHTS

- Newly redeveloped retail at the base of a 108-unit rental building.
- Steps from subway entrance.
- Neighborhood Population: 205,887
- Median Household Income: \$137,878



**mona**  
EXCLUSIVE RETAIL LEASING AGENT

**MATTHEW BALL**

MATTHEW@RETAILBYMONA.COM  
(516) 946-2523

**MARISA SIMKIN**

MARISA@RETAILBYMONA.COM  
(408) 482-0064

# MAP

## 1824 2ND AVENUE

### NEARBY PUBLIC TRANSIT:

Q @ 96TH STREET

AVERAGE WEEKDAY RIDERSHIP: **11,158**

### NEIGHBORING RETAIL TENANTS

- MADAME BONTE
- ENZO BRUNI
- THE MARMARA
- YORKVILLE BAGEL & CAFE
- NICK'S PIZZA
- EQUINOX
- TREVOR DAY SCHOOL
- FIVE IRON GOLF
- UPS STORE
- ELITE BARBER SHOP
- BISCUITS & BATH
- STARBUCKS
- CARNEGIE HILL VETERINARIANS



This information has been obtained from sources believed reliable, but has not been verified for accuracy or completeness. You should conduct a careful, independent investigation of the property and verify all information. Any reliance on this information is solely at your own risk. MONA and the MONA logo are service marks of Mona Retail Holdings LLC. All other marks displayed on this document are the property of their respective owners, and the use of such logos does not imply any affiliation with or endorsement of Mona Retail Holdings LLC.



**MATTHEW BALL**

MATTHEW@RETAILBYMONA.COM  
(516) 946-2523

**MARISA SIMKIN**

MARISA@RETAILBYMONA.COM  
(408) 482-0064