



**MURRAY
HILL MEWS**

560

THIRD AVENUE

MURRAY HILL, MANHATTAN

BETWEEN EAST 37TH STREET & EAST 38TH STREET

**FIRST TIME AVAILABLE
IN OVER 20 YEARS**

mona

FLOOR PLAN

**560 THIRD
AVENUE**

GROUND FLOOR

1,410 SF

CEILING HEIGHT

Up to 8 FT 6 IN

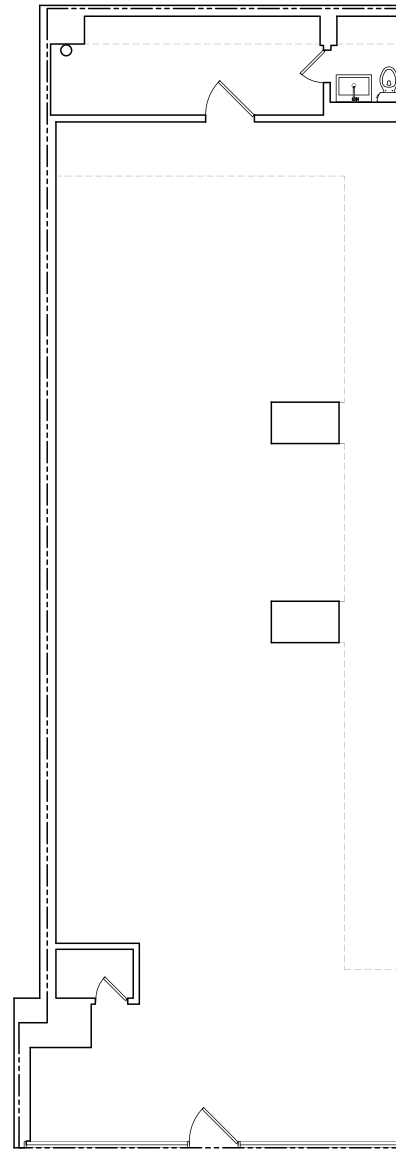
FRONTAGE

40 FT on Third Avenue

POSSESSION

Immediate

Floor plan depicted does not accurately reflect the current dimensions of the space. Space is to be re-surveyed.



THIRD AVENUE

mona

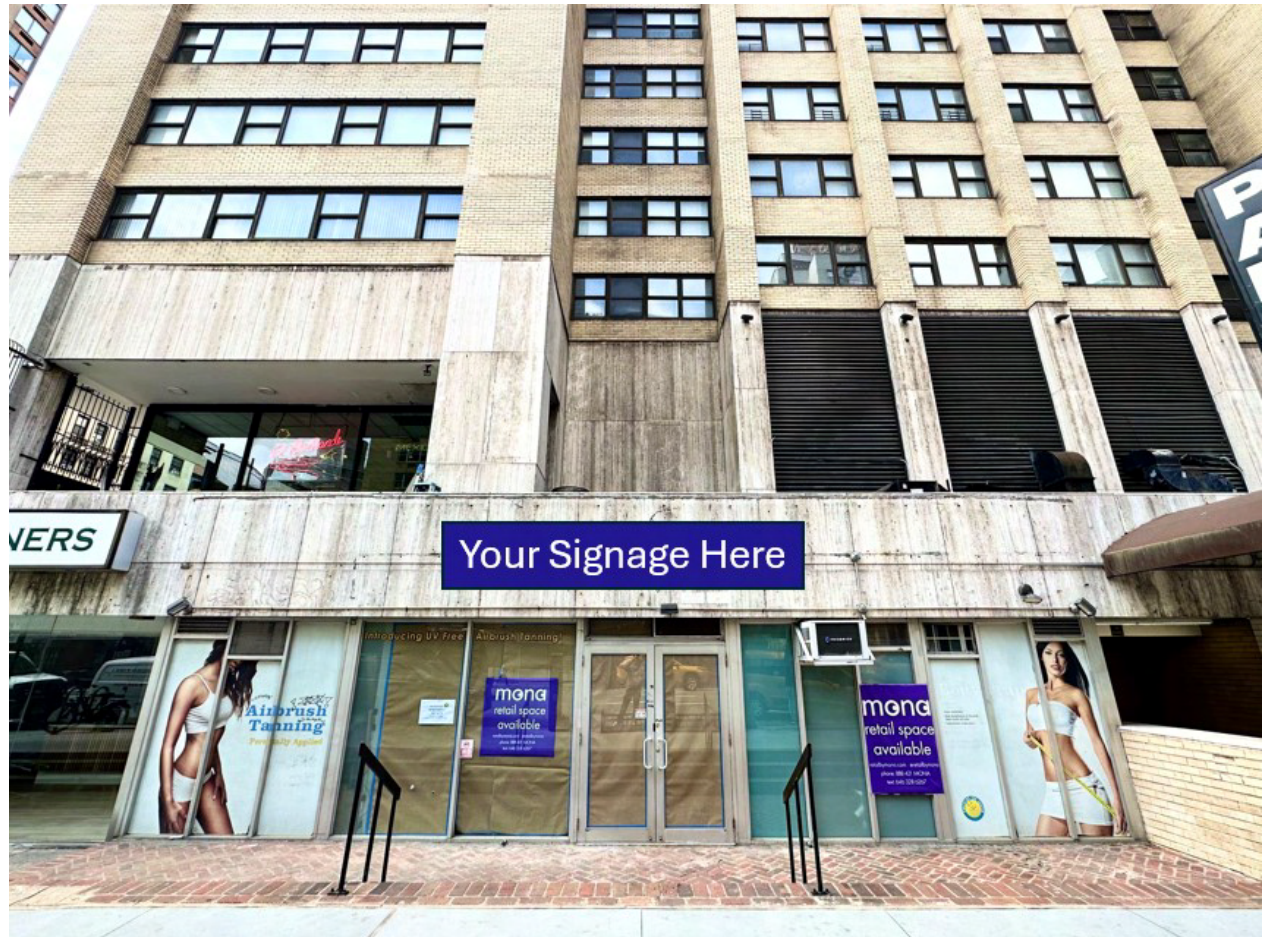
MAX KREINCES

MAX@RETAILBYMONA.COM

HIGHLIGHTS

560 THIRD AVENUE

- Formerly Portofino Sun Tanning and Airbrush Spa.
- Dry users and vented/non vented food users considered.
- Situated at the base of a 264-unit luxury residential building, Murray Hill Mews, in the heart of Murray Hill.
- Perfectly located adjacent to the Grand Central Station trade area which attracts over 250,000 commuters per day.
- Murray Hill attracts a wide range of residents such as college graduates and young professionals as well as families with young children and a large population of seniors.
- Unparalleled visibility from the exit of the Midtown Tunnel which has an approximate vehicle count of 75,000 per day.
- Neighborhood has a strongly diversified retail mix.



mona

MAX KREINCES

MAX@RETAILBYMONA.COM

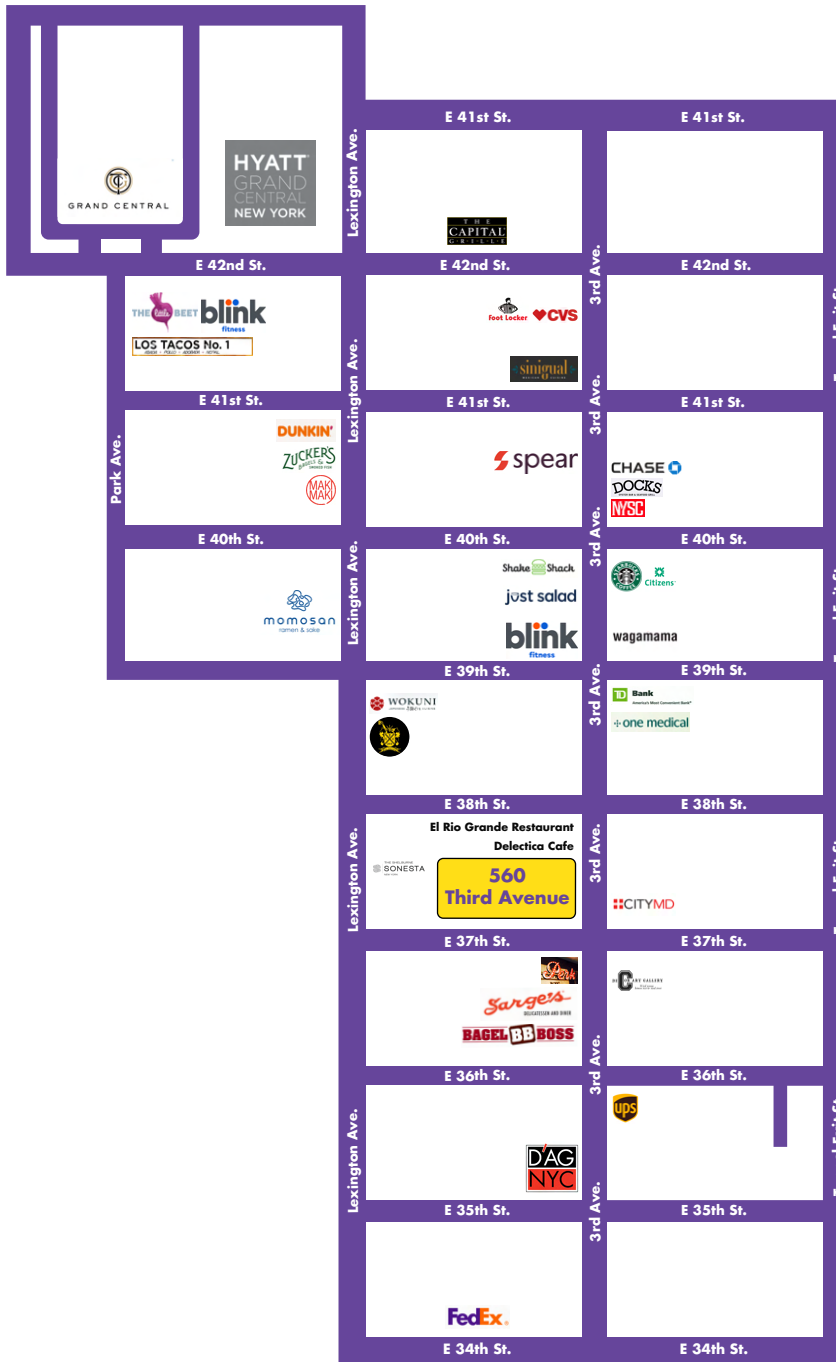
MAP

NEARBY PUBLIC TRANSIT:

4 5 6 7 @ GRAND CENTRAL STATION
6 @ 33RD STREET

SELECT NEARBY RETAIL TENANTS:

EL RIO GRANDE
D'AGOSTINO
THE BLACK SHEEP
BLINK FITNESS
SHAKE SHACK
STARBUCKS
CITIZENS BANK
WAGAMAMA
CITYMD
SARGE'S DELI
BAGEL BOSS
DECOR ART GALLERY
DELECTICA
JUST SALAD
SPEAR PHYSICAL THERAPY
CHASE BANK



560 THIRD AVENUE

mona

MAX KREINCES

MAX@RETAILBYMONA.COM