



**15**  
**PARK ROW**  
EAST BLOCK BETWEEN  
ANN & BEEKMAN STREETS  
FINANCIAL DISTRICT  
MANHATTAN

mong



# FLOOR PLANS

**15**  
PARK ROW

## SPACE A

Ground Floor: 5,968 SF

Mezzanine: 3,470 SF

## SPACE B

655 SF

## SPACE C

Ground Floor: 655 SF

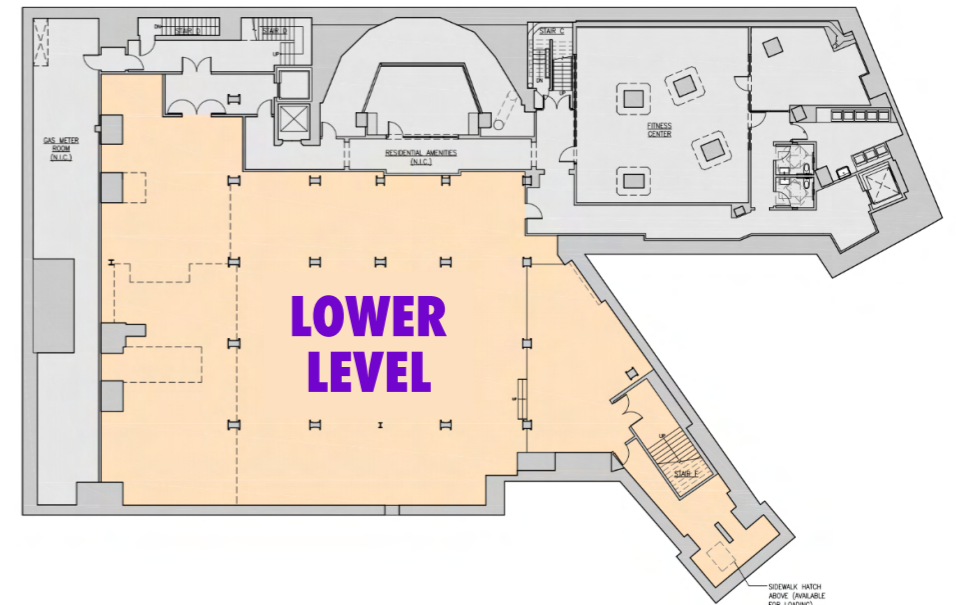
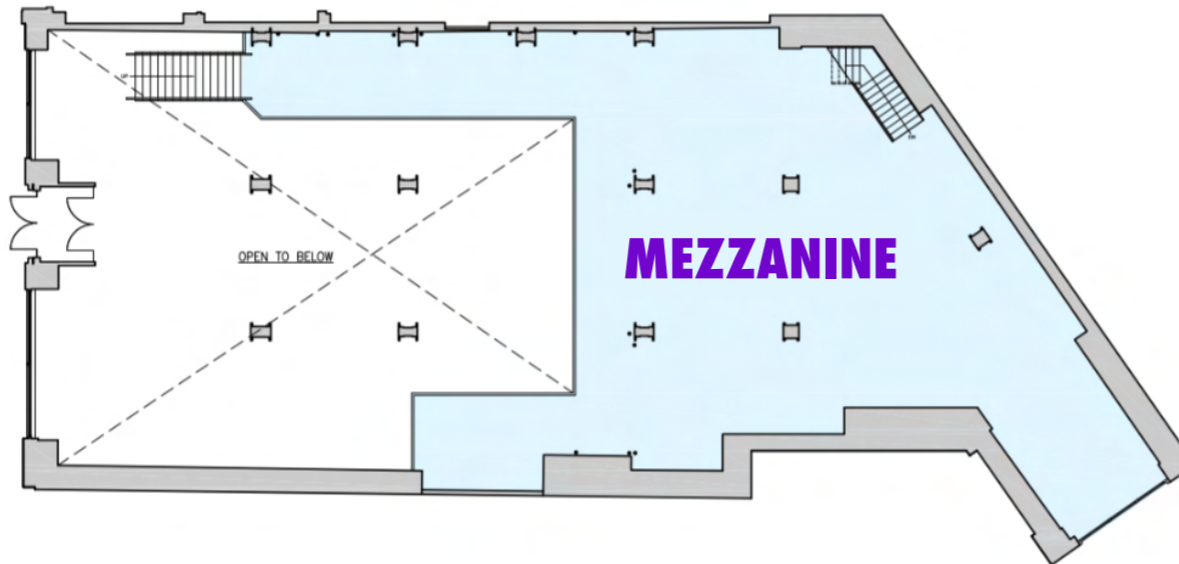
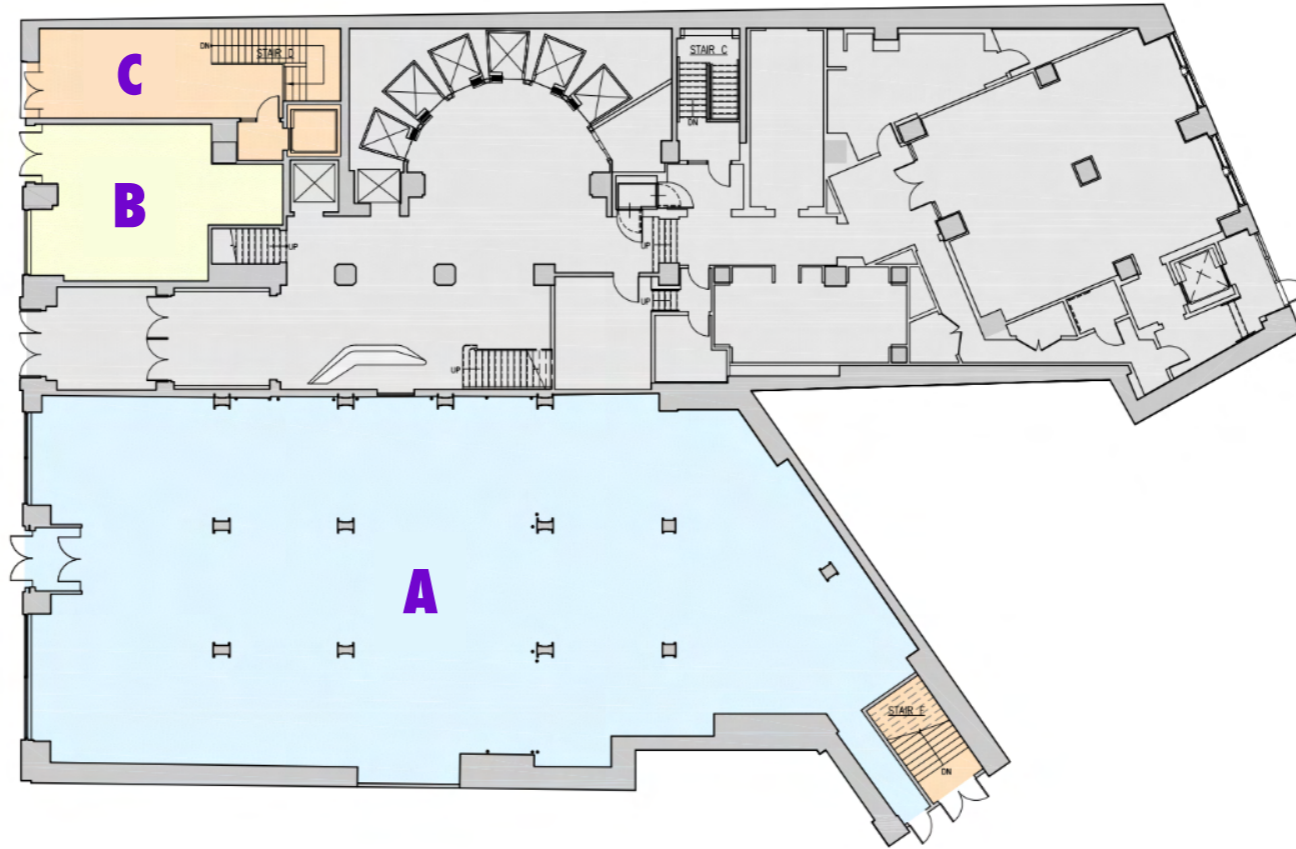
Lower Level: 8,540 SF

## FRONTAGE

90 FT

## POSSESSION

Immediate



**Floor plans and square footage are approximate and need to be confirmed by an architect.**

BRANDON L. SINGER  
brandon@retailbymona.com  
516 808 6794

ALEXANDRA TURBOFF  
alex@retailbymona.com  
917 406 1269

JOHN DIGANGI  
john@retailbymona.com  
516 776 0664

WILLIAM ISORE  
william@retailbymona.com  
202 714 4699

**mona**

# HIGHLIGHTS

Tremendous exposure along one of FiDi's most trafficked corridors.

At the base of a 322-unit residential building.

Close proximity to the Fulton Center (300,000 daily ridership).

All non-vented uses considered.

NEARBY PUBLIC TRANSIT

**A C J Z R W 2 3 4 5 PATH**

SELECT NEARBY RETAIL TENANTS

- Zara
- CVS
- NOBU
- Urban Outfitters
- Chase Bank
- Anthropologie
- Staples
- TD Bank
- Zucker's Bagels
- Century 21
- Citi Bank
- Four Seasons Hotel
- Starbucks
- Eataly
- Convene
- Ole & Steen
- GAP

# MAP



# 15 PARK ROW

BRANDON L. SINGER  
brandon@retailbymona.com  
516 808 6794

ALEXANDRA TURBOFF  
alex@retailbymona.com  
917 406 1269

JOHN DIGANGI  
john@retailbymona.com  
516 776 0664

WILLIAM ISORE  
william@retailbymona.com  
202 714 4699