

ONE PARK ROW

NORTHEAST CORNER OF
ANN STREET & PARK ROW

PRIME CORNER RETAIL IN
MANHATTAN'S FINANCIAL DISTRICT

mona
EXCLUSIVE RETAIL LEASING AGENT



FLOOR PLANS

ONE PARK ROW

GROUND FLOOR:

3,426 SF

SECOND FLOOR:

4,697 SF

CEILING HEIGHT:

15 FT

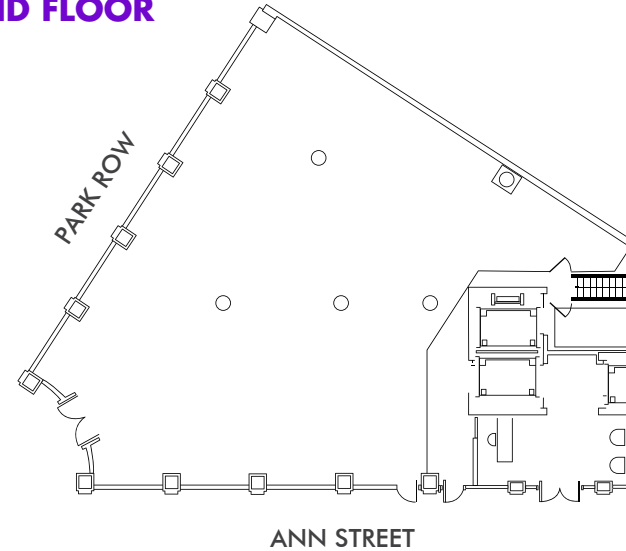
FRONTAGE:

159 FT OF WRAPAROUND

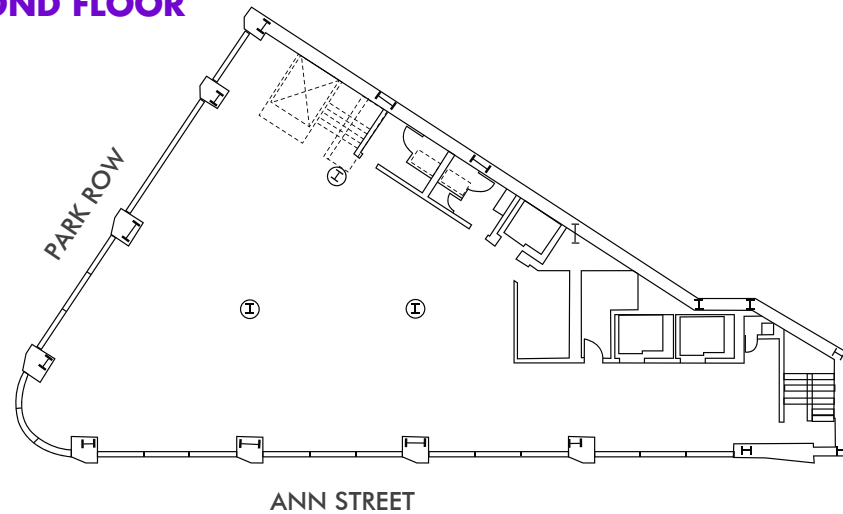
POSSESSION:

Q3 2024

GROUND FLOOR



SECOND FLOOR



mona

BRANDON L. SINGER

BRANDON@RETAILBYMONA.COM

ALEX TURBOFF

ALEX@RETAILBYMONA.COM
917 406 1269

JOHN DIGANGI

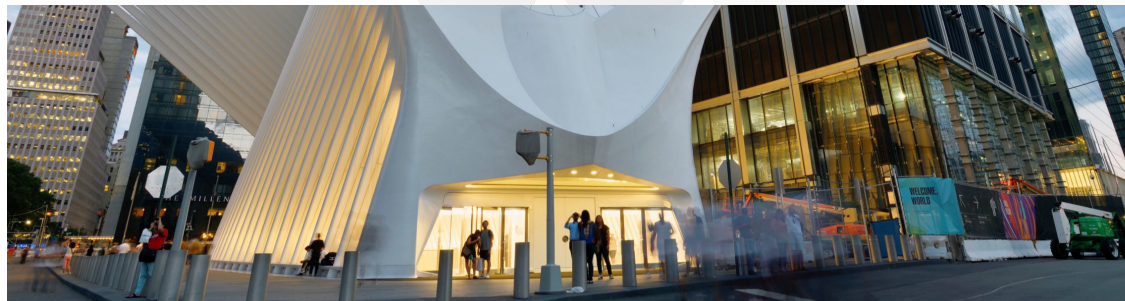
JOHN@RETAILBYMONA.COM
516 776 0664

WILLIAM ISORE

WILLIAM@RETAILBYMONA.COM
202 714 4699

HIGHLIGHTS

- Prime corner retail with high visibility.
- New construction with high ceilings.
- Located in the heart of the Financial District.
- Near several major subway stations.
- At the base of a 58-unit luxury condominium.
- All uses considered.
- Train Stations nearby - Fulton St (27M riders in 2019) / World Trade Center (18.5M in 2018) / WTC Cortlandt (4.2M in 2019) / Park Place



ONE PARK ROW



mona

BRANDON L. SINGER

BRANDON@RETAILBYMONA.COM

ALEX TURBOFF

ALEX@RETAILBYMONA.COM
917 406 1269

JOHN DIGANGI

JOHN@RETAILBYMONA.COM
516 776 0664

WILLIAM ISORE

WILLIAM@RETAILBYMONA.COM
202 714 4699

MAP

ONE PARK ROW

NEARBY PUBLIC TRANSIT:

A,C,J,Z,1,2,3,4,5,E,R,W
AND PATH TRAINS

SELECT NEARBY RETAIL TENANTS

STREET LEVEL RETAILERS:

- ZARA
- AT&T
- GAP
- CVS
- FIRST REPUBLIC BANK
- PRINTEMPS (COMING SOON)
- NOBU
- CITIBANK
- HERMES
- URBAN OUTFITTERS
- CENTURY 21
- WHOLE FOODS
- TD BANK
- DUANE READE
- TIFFANY & CO
- ANTHROPOLOGIE
- BANK OF AMERICA
- EQUINOX
- CHASE BANK
- FOUR SEASONS HOTEL
- THE BEEKMAN HOTEL
- STAPLES
- CUT BY WOLFGANG PUCK
- CIPRIANI

WESTFIELD WORLD TRADE CENTER/ THE OCULUS MALL

- AESOP
- EATALY
- TUMI
- APPLE STORE
- LACOSTE
- UGG
- BOSS
- LONGINES
- UNDER ARMOUR
- BREITLING
- SEPHORA
- WALGREENS
- CASPER
- PANDORA
- STARBUCKS
- COS
- SWAROVSKI
- H&M
- SWATCH
- KATE SPADE
- TISSOT



This information has been obtained from sources believed reliable, but has not been verified for accuracy or completeness. You should conduct a careful, independent investigation of the property and verify all information. Any reliance on this information is solely at your own risk. MONA and the MONA logo are service marks of Mona Retail Holdings LLC. All other marks displayed on this document are the property of their respective owners, and the use of such logos does not imply any affiliation with or endorsement of Mona Retail Holdings LLC.



BRANDON L. SINGER

BRANDON@RETAILBYMONA.COM

ALEX TURBOFF

ALEX@RETAILBYMONA.COM
917 406 1269

JOHN DIGANGI

JOHN@RETAILBYMONA.COM
516 776 0664

WILLIAM ISORE

WILLIAM@RETAILBYMONA.COM
202 714 4699