

405

WEST 14TH STREET

BETWEEN NINTH & TENTH AVENUES
MEATPACKING DISTRICT, NEW YORK

**HIGHLY DESIREABLE SHOPPING BLOCK
IN THE MEATPACKING DISTRICT**

mona

FLOOR PLANS

405 WEST 14TH STREET

GROUND FLOOR:

2,917 SF

SECOND FLOOR

2,900 SF

LOWER LEVEL:

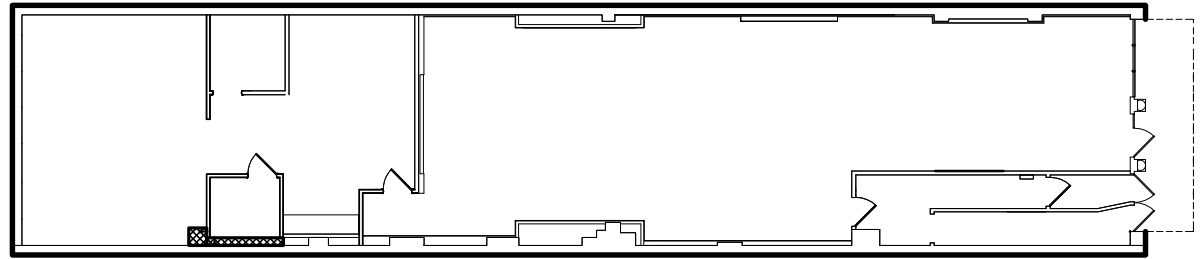
1,661 SF

FRONTAGE

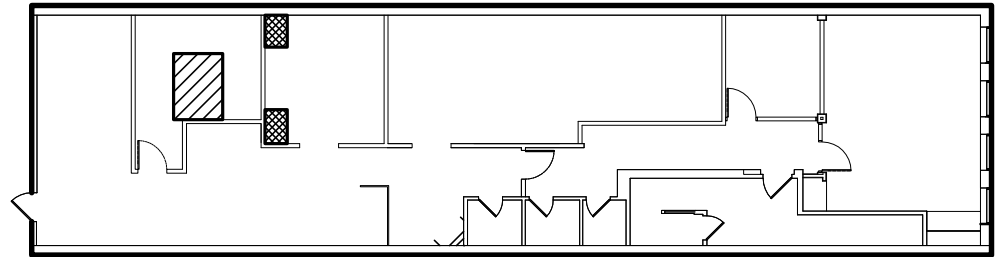
25 FT ON WEST 14TH STREET

POSSESSION

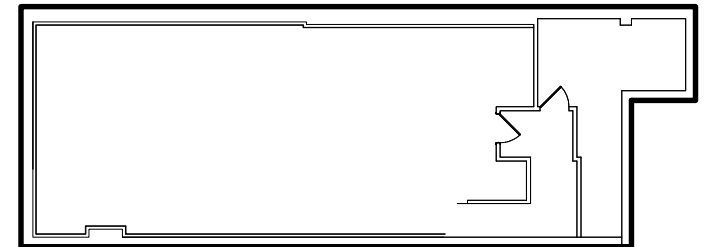
IMMEDIATE



GROUND FLOOR



SECOND FLOOR



LOWER LEVEL

mona

ERIC LE GOFF

ERIC@RETAILBYMONA.COM
646 701 1004

KIM LEVANDOVSKY

KIM@RETAILBYMONA.COM
347 431 5354

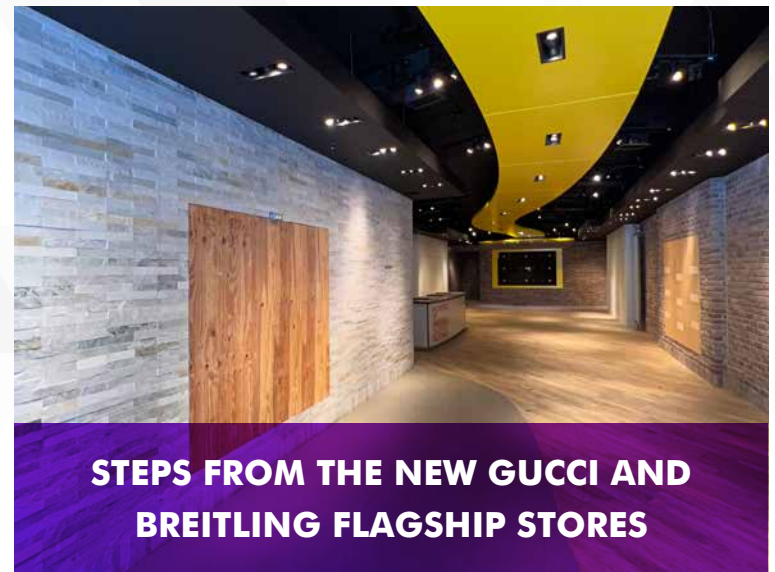
LAUREN FARNOOSH

LAUREN@RETAILBYMONA.COM
559 974 1227

HIGHLIGHTS

- Formerly The Ugg Store.
- Turn-key retail space.
- Prime retail on West 14th Street.
- Ground Floor can be leased separately.
- Dry use only.
- Situated in a prime destination one block from Chelsea Market, which brings 8 million visitors per year.
- The area surrounding West 14th Street sees high foot traffic throughout the day and night. The proximity to the High Line, and Little Island, ensures a steady flow of visitors, both locals and tourists.
- The district's popularity makes it a prime spot for retailers to showcase their products to both local and international shoppers.

405 WEST 14TH STREET



STEPS FROM THE NEW GUCCI AND BREITLING FLAGSHIP STORES

mona

ERIC LE GOFF

ERIC@RETAILBYMONA.COM
646 701 1004

KIM LEVANDOVSKY

KIM@RETAILBYMONA.COM
347 431 5354

LAUREN FARNOOSH

LAUREN@RETAILBYMONA.COM
559 974 1227

NEIGHBORHOOD HIGHLIGHTS

405 WEST 14TH STREET

- Thriving TAMI office market anchored by Google and Yext headquarters.
- Steps from major attractions such as the Apple, Whitney Museum, Chelsea Market, The High Line, Gansevoort Hotel, and Soho House.
- The Meatpacking District has undergone a remarkable transformation from its industrial roots to a chic and upscale neighborhood.
- The neighborhood is synonymous with fashion, luxury, and high-end brands. Retailers looking to establish a presence in a fashionable and upscale environment will find the Meatpacking District an ideal location.



**BE IN PRIME MEATPACKING DISTRICT
NEXT TO TOP-TIER LUXURY BRANDS.**

mona

ERIC LE GOFF

ERIC@RETAILBYMONA.COM
646 701 1004

KIM LEVANDOVSKY

KIM@RETAILBYMONA.COM
347 431 5354

LAUREN FARNOOSH

LAUREN@RETAILBYMONA.COM
559 974 1227

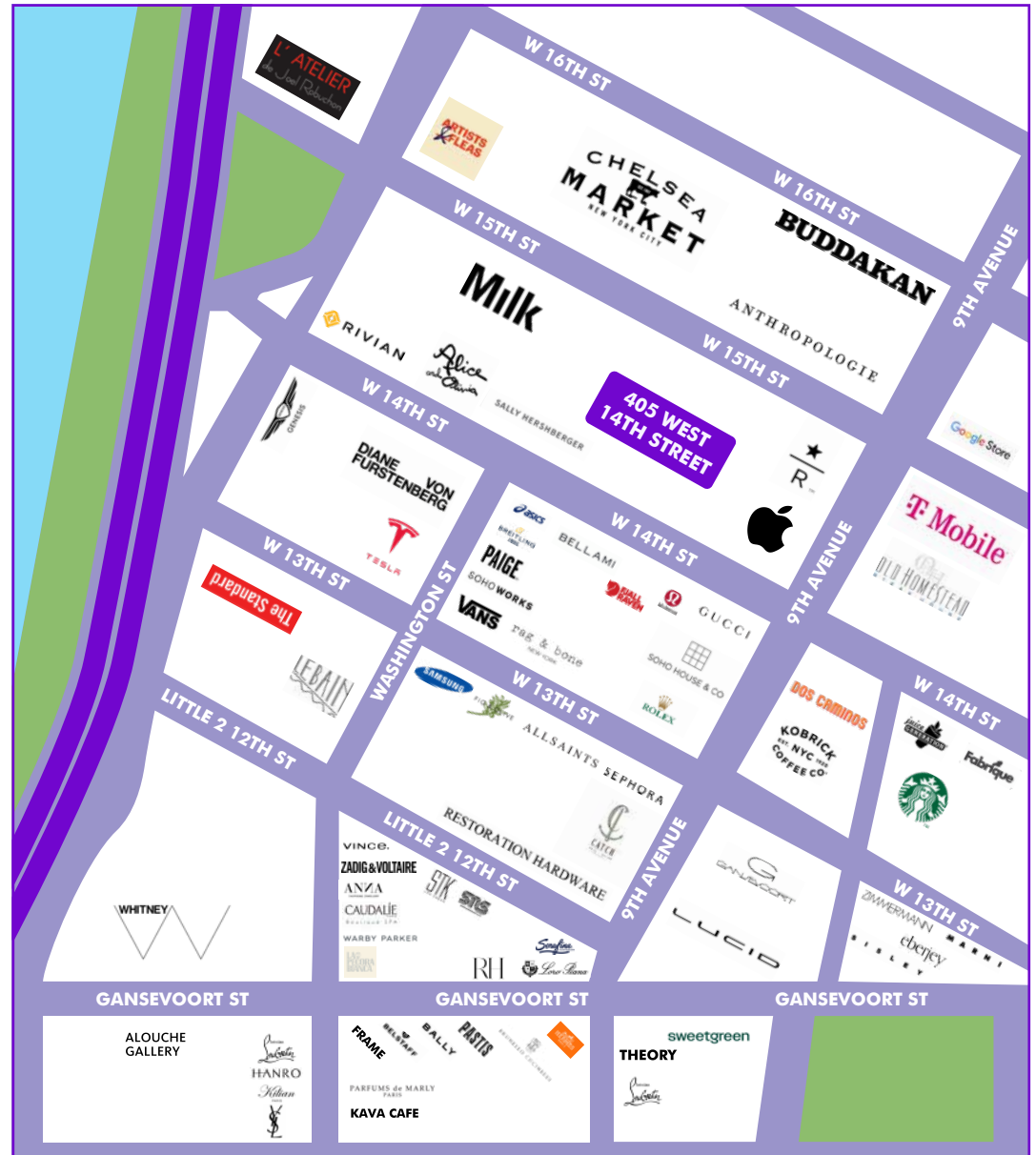
MAP

NEARBY PUBLIC TRANSIT:

A, C, E, L, 1, 2, 3

SELECT NEARBY RETAIL TENANTS

- GUCCI
- APPLE
- BREITLING
- SEPHORA
- LULULEMON
- SOHO HOUSE NEW YORK
- SAINT LAURENT
- HERMES
- ALL SAINTS
- RAG AND BONE
- ALICE AND OLIVIA
- DIANE VON FURSTENBERG
- TESLA
- RH NEW YORK
- CATCH NYC
- FIG AND OLIVE
- STARBUCKS RESERVE
- STANDARD HOTEL
- WHITNEY MUSEUM
- ROLEX
- BRUNELLO CUCINELLI
- LORO PIANA
- BELSTAFF
- CHRISTIAN LOUBOUTIN
- HERMAN MILLER



ERIC LE GOFF

ERIC@RETAILBYMONA.COM
646 701 1004

KIM LEVANDOVSKY

KIM@RETAILBYMONA.COM
347 431 5354

LAUREN FARNOOSH

LAUREN@RETAILBYMONA.COM
559 974 1227



ERIC LE GOFF

ERIC@RETAILBYMONA.COM
646 701 1004

KIM LEVANDOVSKY

KIM@RETAILBYMONA.COM
347 431 5354

LAUREN FARNOOSH

LAUREN@RETAILBYMONA.COM
559 974 1227

mona