

2478

BROADWAY

NORTHEAST CORNER OF 92ND STREET
UPPER WEST SIDE, MANHATTAN

RETAIL FOR LEASE

RETAIL FOR LEASE

LOTTO

mona

FLOOR PLANS

2478 BROADWAY

GROUND FLOOR:

1,250 SF

BASEMENT:

1,000 SF

CEILING HEIGHT

GROUND FLOOR: 10 FT

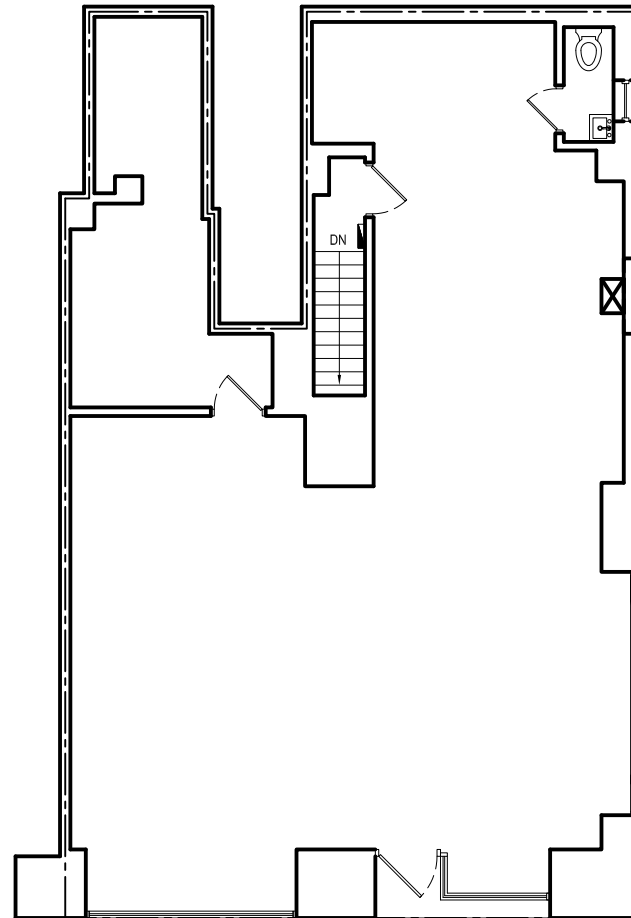
FRONTAGE

30 FT OF WRAPAROUND

POSSESSION

IMMEDIATE

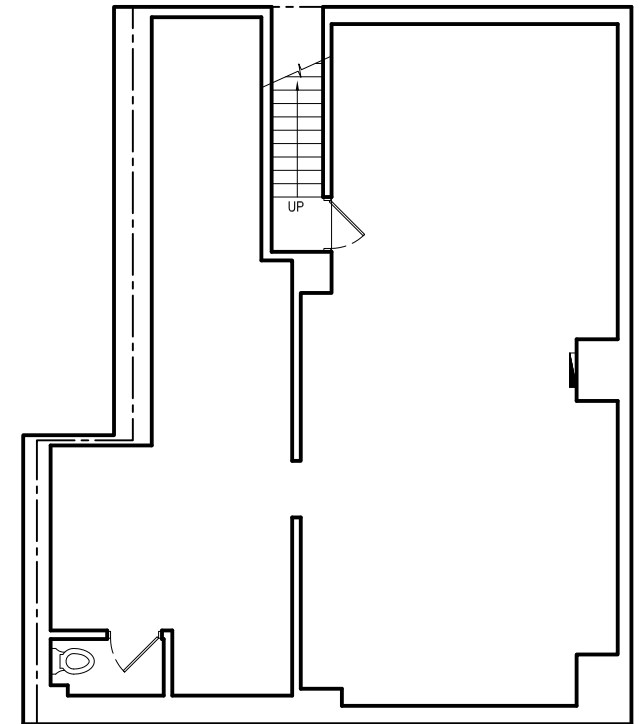
GROUND FLOOR



WEST 92ND STREET

BROADWAY

BASEMENT



mona

BRANDON SINGER

BRANDON@RETAILBYMONA.COM

MANU WENDUM

MANU@RETAILBYMONA.COM
(917) 331-6238

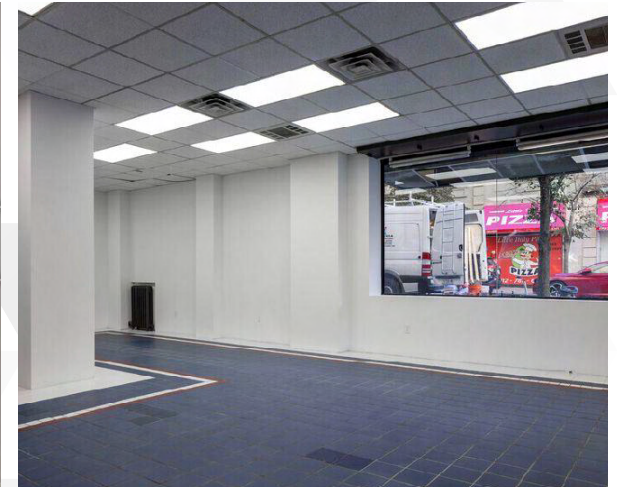
JOHN DIGANGI

JOHN@RETAILBYMONA.COM
(516) 776-0664

HIGHLIGHTS

2478 BROADWAY

- Prime corner retail.
- Formerly The Vitamin Shoppe.
- Amazing co-tenancy.
- Close proximity to the 1, 2, 3 subway lines.
- Expansive wraparound frontage with strong presence on Broadway.
- Located in the heart of the affluent Upper West Side.
- High foot traffic area.



mona

BRANDON SINGER

BRANDON@RETAILBYMONA.COM

MANU WENDUM

MANU@RETAILBYMONA.COM
(917) 331-6238

JOHN DIGANGI

JOHN@RETAILBYMONA.COM
(516) 776-0664

MAP

2478 BROADWAY

NEARBY PUBLIC TRANSIT: 1, 2, 3

SELECT NEARBY RETAIL TENANTS

- PETCO
- SWEETGREEN
- CVS
- BLUEMERCURY
- STARBUCKS
- LITTLE ITALY PIZZA
- KOLOR BAR
- POPEYES
- DUANE READE
- TD BANK
- THE DERMATOLOGY SPECIALISTS
- GOTHAM WINE & LIQUOR
- EQUINOX
- BOND VET
- JOE & THE JUICE
- CITY DINER
- CARMINE'S
- BANK OF AMERICA



BRANDON SINGER

BRANDON@RETAILBYMONA.COM

MANU WENDUM

MANU@RETAILBYMONA.COM
(917) 331-6238

JOHN DIGANGI

JOHN@RETAILBYMONA.COM
(516) 776-0664



BRANDON SINGER
BRANDON@RETAILBYMONA.COM

MANU WENDUM
MANU@RETAILBYMONA.COM
(917) 331-6238

JOHN DIGANGI
JOHN@RETAILBYMONA.COM
(516) 776-0664

mona