

# 57 & 1

1037 1ST AVENUE  
SW CORNER OF 57TH  
STREET & FIRST AVENUE

SUTTON PLACE  
MANHATTAN



moma

# FLOOR PLANS

# 57 & 1

1037 1<sup>ST</sup> AVENUE  
SW CORNER OF 57<sup>TH</sup> STREET  
& FIRST AVENUE

## GROUND FLOOR

3,644 SF

## MEZZANINE

609 SF

## LOWER LEVEL

3,378 SF

## CEILING HEIGHT

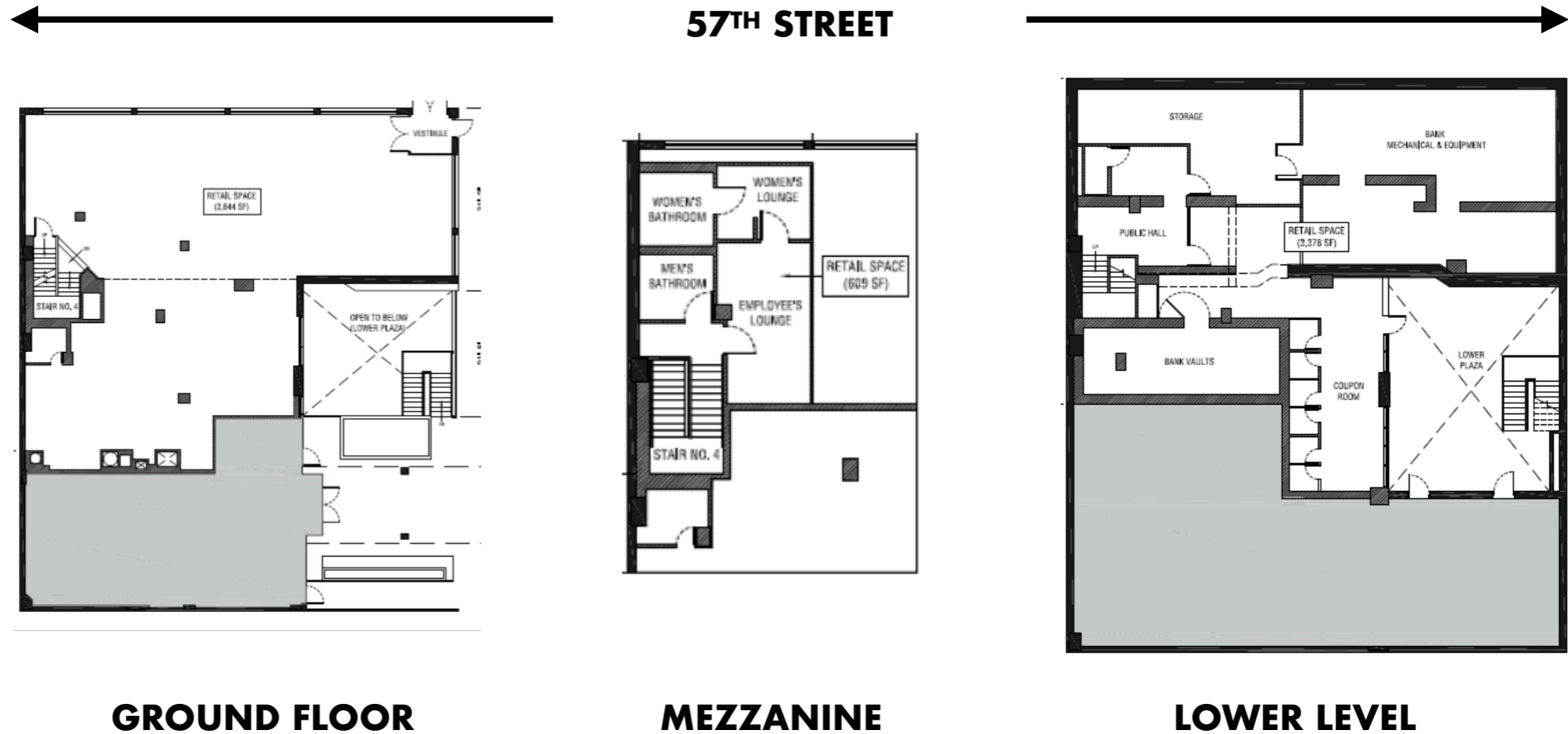
Ground: 22 FT

## FRONTAGE

31 FT on First Avenue  
75 FT on East 57<sup>TH</sup> Street

## POSSESSION

Immediate



Floor plans and square footage are approximate and need to be confirmed by an architect.

BRANDON SINGER  
brandon@retailbymona.com  
516 808 6794

KELLY GEDINSKY  
kelly@retailbymona.com  
917 848 8528

KIM LEVANDOVSKY  
kim@retailbymona.com  
347 431 5354

NICOLAS PAVIET  
nicolas@retailbymona.com  
872 279 0009

mona

# HIGHLIGHTS

# 57 & 1

1037 1<sup>ST</sup> AVENUE  
SW CORNER OF 57<sup>TH</sup> STREET  
& FIRST AVENUE

Formerly Chase Bank.

Uniquely positioned between Whole Foods, Morton Williams and Trader Joe's.

7-day-a-week foot traffic surrounded by a ton of dining and retail.

Incredible single story branding opportunity.

Dramatic ceiling heights.

Selling Lower Level

Easily vented.

Logical divisions considered.

All uses considered.



BRANDON SINGER  
brandon@retailbymona.com  
516 808 6794

KELLY GEDINSKY  
kelly@retailbymona.com  
917 848 8528

KIM LEVANDOVSKY  
kim@retailbymona.com  
347 431 5354

NICOLAS PAVIET  
nicolas@retailbymona.com  
872 279 0009

mona

# MAP

NEARBY PUBLIC TRANSIT

**A B 3 4 5 6 Q & Roosevelt Island Tram**

SELECT NEARBY  
RETAIL TENANTS

- Morton Williams**
- Whole Foods**
- Trader Joe's**
- TJ Maxx**
- Home Depot (Coming Soon)**
- Mr. Chow's**
- Blue Mercury**
- Duane Reade**
- Marathon Coffee**
- Frolla Café**
- Neary's**
- Biscuits and Bath**
- Coco Pazzo**
- Old Stove Pub**
- Under the Bridge**
- Guastavino's**



# 57 & 1

1037 1<sup>ST</sup> AVENUE  
SW CORNER OF 57<sup>TH</sup> STREET  
& FIRST AVENUE



BRANDON SINGER  
brandon@retailbymona.com  
516 808 6794

KELLY GEDINSKY  
kelly@retailbymona.com  
917 848 8528

KIM LEVANDOVSKY  
kim@retailbymona.com  
347 431 5354

NICOLAS PAVIET  
nicolas@retailbymona.com  
872 279 0009



**BRANDON SINGER**  
**CEO + FOUNDER**

brandon@retailbymona.com  
516 808 6794

**KELLY GEDINSKY**

kelly@retailbymona.com  
917 848 8528

**KIM LEVANDOVSKY**

kim@retailbymona.com  
347 431 5354

**NICOLAS PAVIET**

nicolas@retailbymona.com  
872 279 0009



@RETAILBYMONA



RETAIL-BY-MONA

RETAILBYMONA.COM

**mona**