



ARTIST'S RENDERING

1037 FIRST AVENUE

CORNER OF EAST 57TH STREET & FIRST AVENUE
SUTTON PLACE, MANHATTAN

PRIME CORNER RETAIL

mona
EXCLUSIVE RETAIL LEASING AGENT

FLOOR PLAN

1037 FIRST AVENUE
SUTTON PLACE, MANHATTAN

GROUND FLOOR

Size: 3,644 SF

Ceiling Height: 22 FT

MEZZANINE

Size: 609 SF

LOWER LEVEL

Size: 3,378 SF

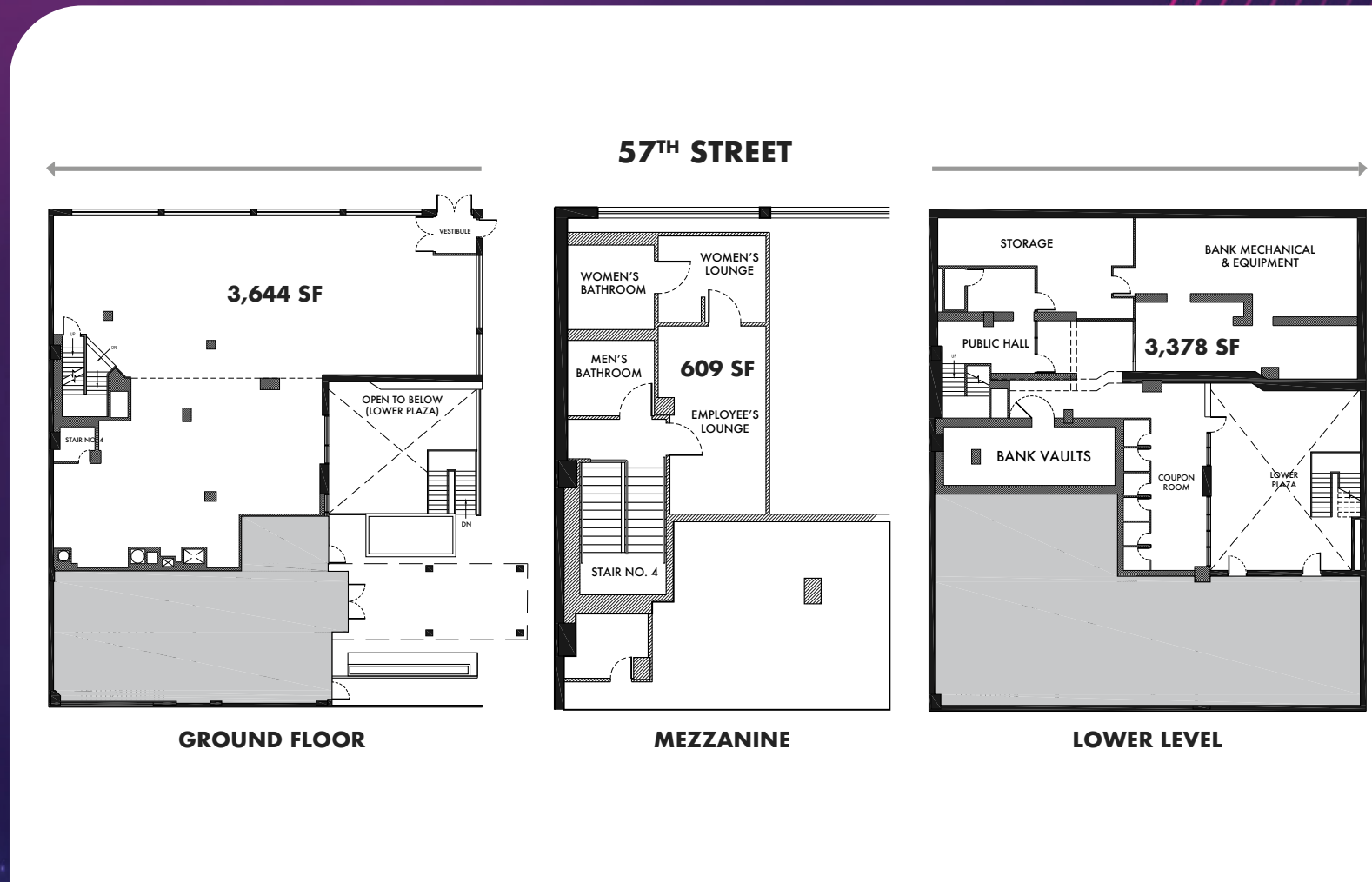
FRONTAGE

First Avenue: 31 FT

East 57th Street: 75 FT

POSSESSION

IMMEDIATE



mona

BRANDON L. SINGER

BRANDON@RETAILBYMONA.COM
888-421-6662

MANU WENDUM

MANU@RETAILBYMONA.COM
917-331-6238

HIGHLIGHTS

1037 FIRST AVENUE
SUTTON PLACE, MANHATTAN

- Formerly Chase Bank.
- Uniquely positioned between Whole Foods, Morton Williams and Trader Joe's.
- 7-day-a-week foot traffic surrounded by a ton of dining and retail.
- Incredible single story branding opportunity.
- Dramatic ceiling heights.
- Selling Lower Level.
- Easily vented.
- Logical divisions considered.
- Cannabis not permitted.



mona

BRANDON L. SINGER

BRANDON@RETAILBYMONA.COM
888-421-6662

MANU WENDUM

MANU@RETAILBYMONA.COM
917-331-6238

MAP

1037 FIRST AVENUE
SUTTON PLACE, MANHATTAN

NEARBY PUBLIC TRANSIT:

A B Q 3 4 5 6 & Roosevelt Island Tram

SELECT NEARBY RESTAURANTS AND ANCHOR TENANTS:

Morton Williams
Whole Foods
Trader Joe's
TJ Maxx
Home Depot
Mr. Chow's
Blue Mercury
Duane Reade
Marathon Coffee
Frolla Café
Biscuits and Bath
Tramway Diner
Guastavino's
Au Za'atar

This information has been obtained from sources believed reliable, but has not been verified for accuracy or completeness. You should conduct a careful, independent investigation of the property and verify all information. Any reliance on this information is solely at your own risk. MONA and the MONA logo are service marks of Mona Retail Holdings LLC. All other marks displayed on this document are the property of their respective owners, and the use of such logos does not imply any affiliation with or endorsement of Mona Retail Holdings LLC.



mona

BRANDON L. SINGER

BRANDON@RETAILBYMONA.COM
888-421-6662

MANU WENDUM

MANU@RETAILBYMONA.COM
917-331-6238