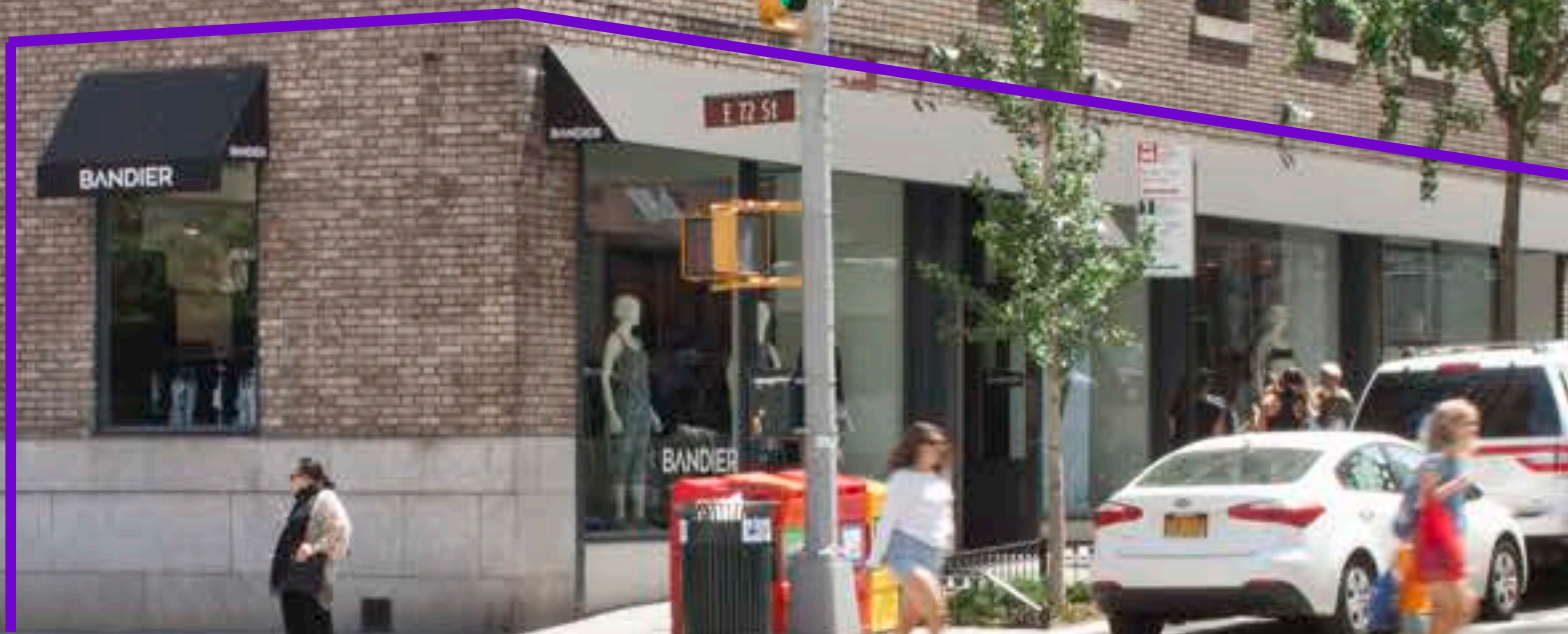


997

LEXINGTON AVENUE

Upper East Side
MANHATTAN



mona

TURN-KEY RETAIL SPACE

997
LEXINGTON AVENUE



BRANDON SINGER
brandon@retailbymona.com
516 808 6794

MICHAEL CODY
michael@retailbymona.com
513 374 8630

mona

FLOORPLANS

GROUND

1,636 SF

LOWER LEVEL

800 SF

FRONTAGE

Over 82FT of wraparound frontage.

CEILING HEIGHT

Grade change on Ground Floor.

Ground

Northern Portion: Up to 11FT 6IN

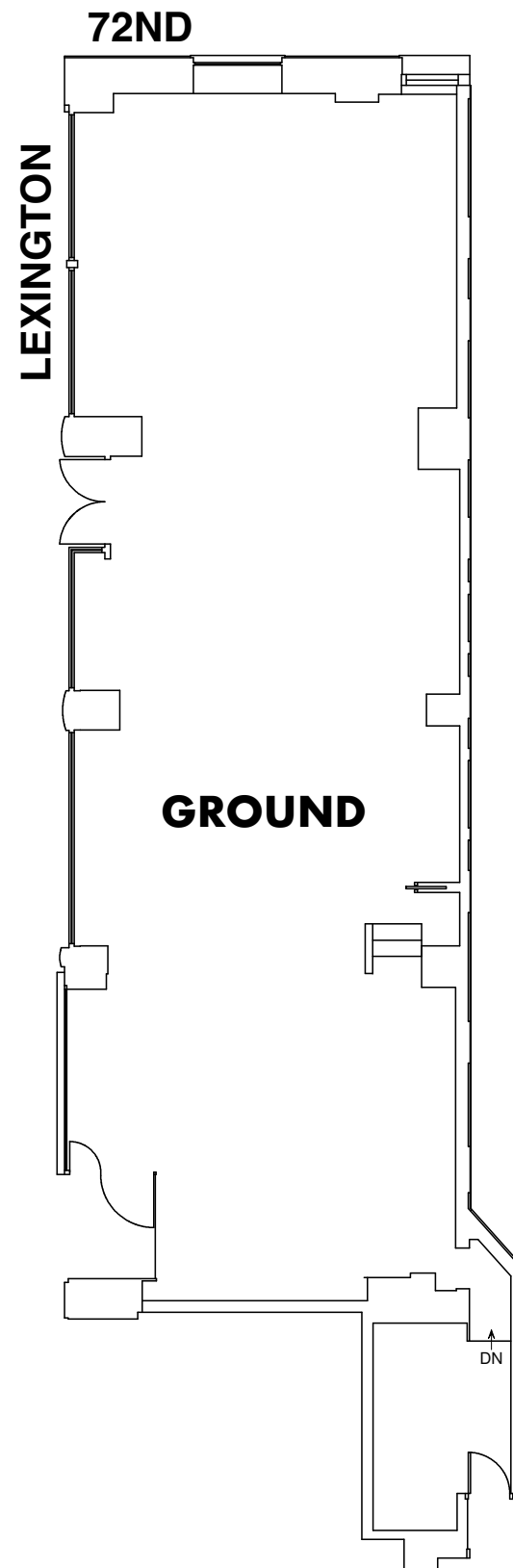
Southern Portion: Up to 10FT 4IN

Lower Level

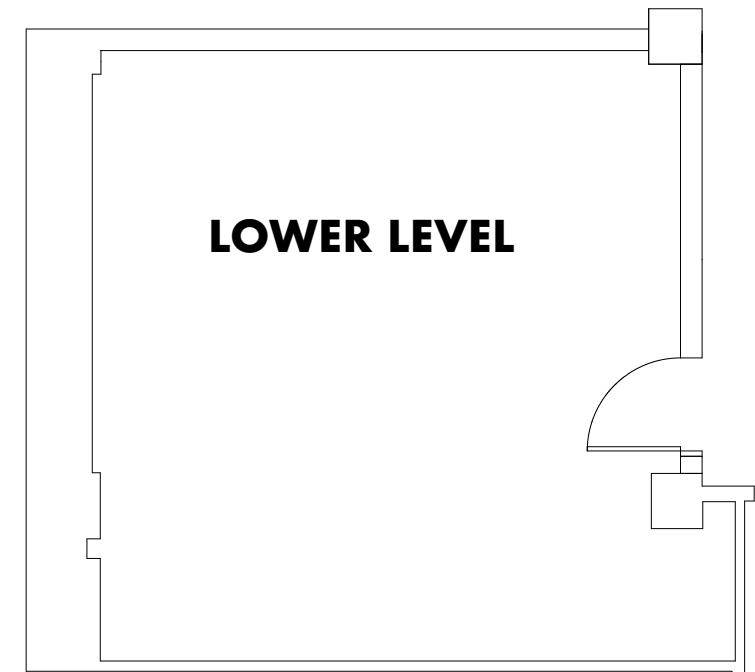
Up to 8FT 5IN

POSSESSION

Arranged



997
LEXINGTON AVENUE



HIGHLIGHTS

Beautifully built out, move in ready retail space.

Formerly Bandier.

At the base of a 23 unit luxury condominium apartment building.

Close to Lenox Hill Hospital and several schools, including The Episcopal School, Manhattan High School, Buckley School, and St. Jean Baptiste High School.

Short walk to the N, Q, R, 4, 6 Trains.



997
LEXINGTON AVENUE



BRANDON SINGER
brandon@retailbymona.com
516 808 6794

MICHAEL CODY
michael@retailbymona.com
513 374 8630

mona

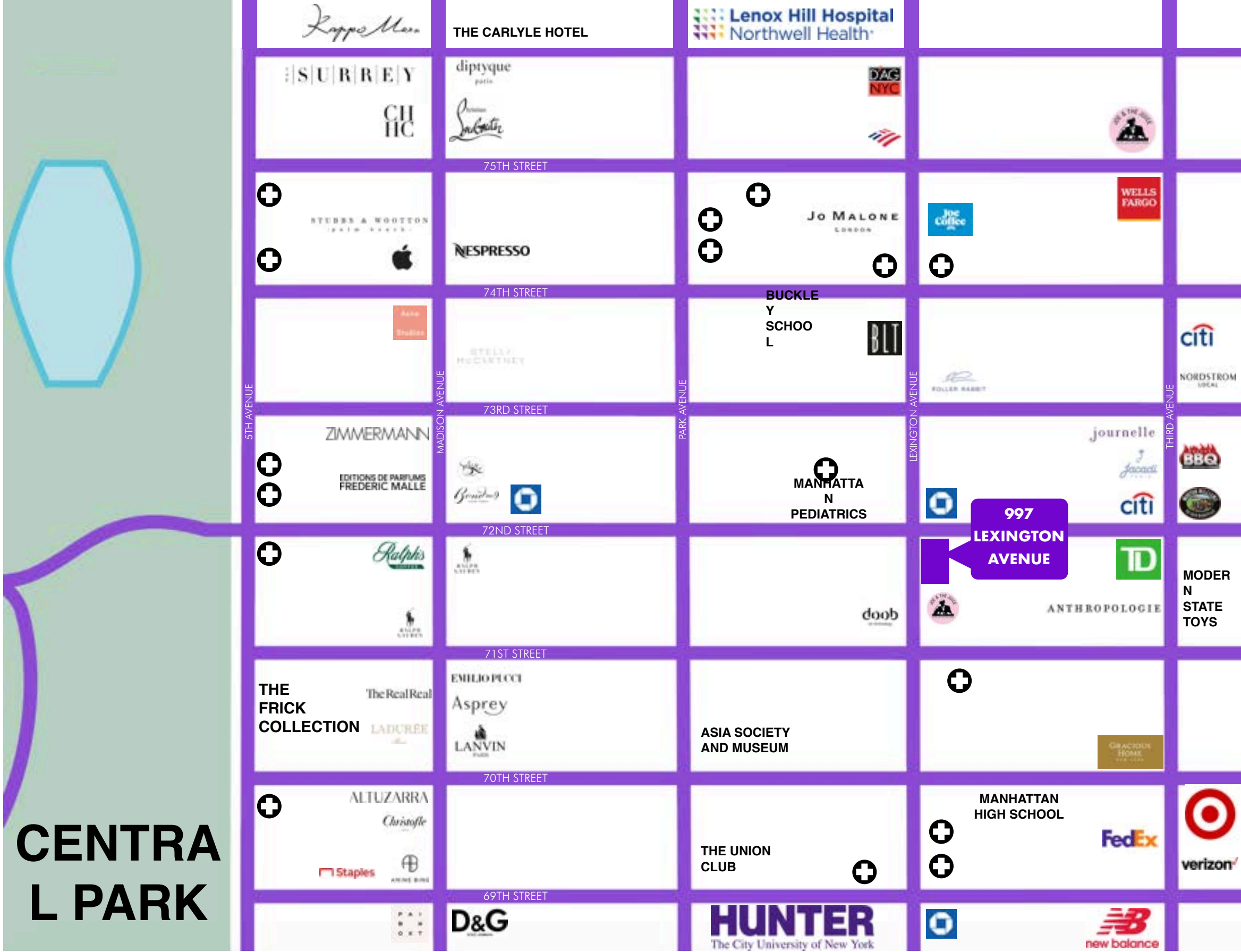
MAP

NEARBY PUBLIC
TRANSPORT
4 5 6 N Q R F

SELECT NEARBY
RETAIL TENANTS
**Anthropologie
Nordstrom Local**

**Target
Jo Malone
Jacadi
Journelle
Jennifer Miller
Roller Rabbit**

 DOCTOR'S
OFFICE



CENTRAL PARK

BRANDON SINGER
brandon@retailbymona.com
516 808 6794

MICHAEL CODY
michael@retailbymona.com
513 374 8630

mona