



# 530

PARK AVENUE  
SOUTHWEST CORNER OF 61<sup>ST</sup> STREET

UPPER EAST SIDE  
MANHATTAN

mona

# PRIME CORNER RETAIL OPPORTUNITY

**530**  
PARK AVENUE  
S/W/C OF 61<sup>ST</sup> STREET



## FOR MEDICAL OR PROFESSIONAL USER ON UPPER EAST SIDE

BRANDON SINGER  
brandon@retailbymona.com  
516 808 6794

JASON FRIEDMAN  
jason.friedman@retailbymona.com  
917 399 8952

mona

# FLOORPLANS

**530**  
PARK AVENUE  
S/W/C OF 61<sup>ST</sup> STREET

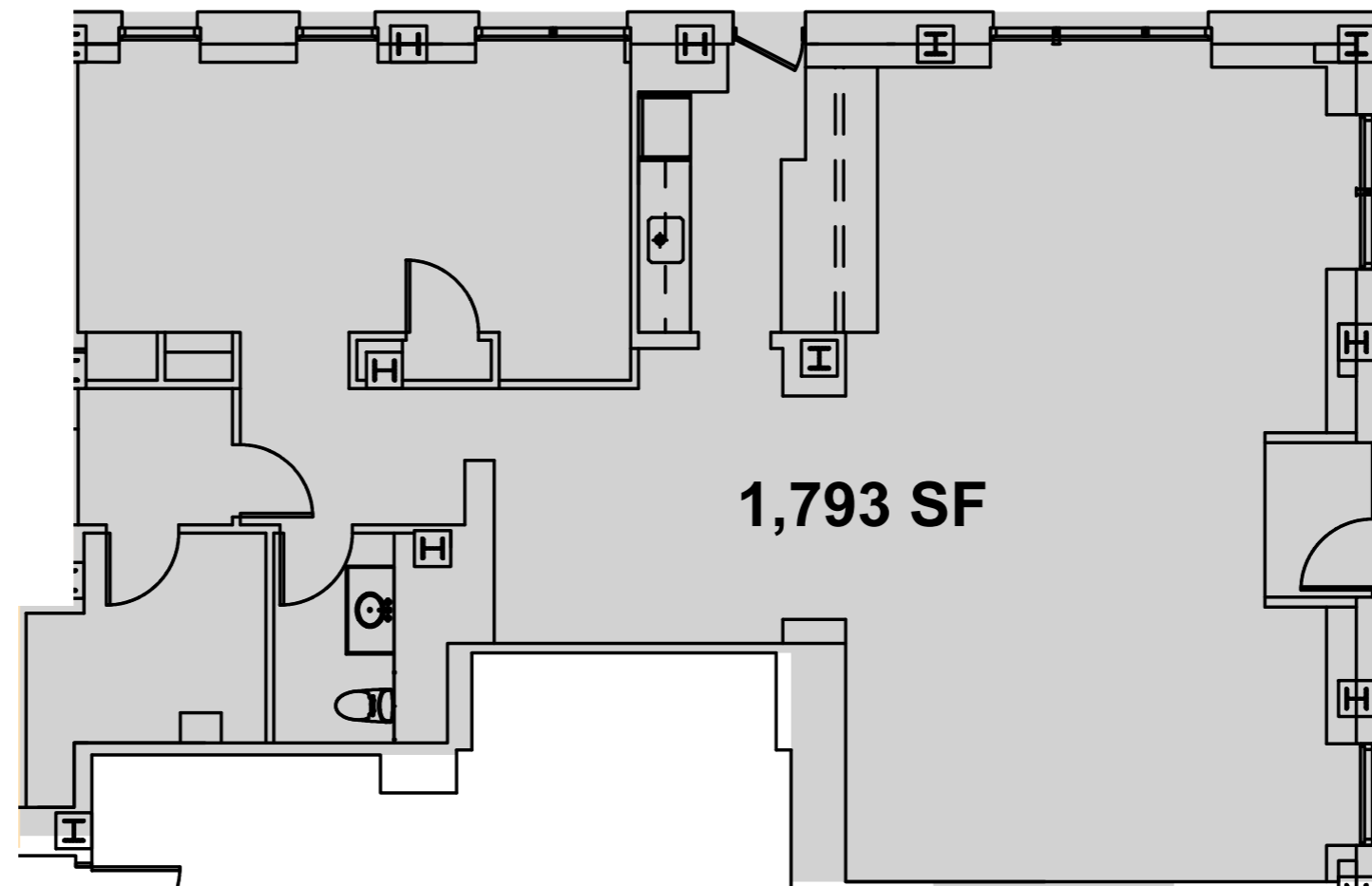
**GROUND**  
1,793 SF

**CEILING HEIGHT**  
Ground: 9FT

**FRONTAGE**  
40 FT on Park Avenue & 55 FT on  
East 61<sup>ST</sup> Street

**POSSESSION**  
Arranged

## GROUND FLOOR



Floor plans and square footage are approximate and need to be confirmed by an architect.

BRANDON SINGER  
brandon@retailbymona.com  
516 808 6794

JASON FRIEDMAN  
jason.friedman@retailbymona.com  
917 399 8952

mona

# HIGHLIGHTS

Coveted corner retail space on Park Avenue.  
Currently showroom/office space.

Open to medical and professional uses only.  
Space includes kitchen, beautiful hardwood floors, and ample natural light.

Highly trafficked block directly across from The Loews Regency New York, Sant Ambroeus, La Goulue, and Serafina.

Situated at the base of a luxury residential building in a high net-worth neighborhood.



**530**  
PARK AVENUE  
S/W/C OF 61<sup>ST</sup> STREET

BRANDON SINGER  
brandon@retailbymona.com  
516 808 6794

JASON FRIEDMAN  
jason.friedman@retailbymona.com  
917 399 8952

mona

# MAP

**530**  
PARK AVENUE  
S/W/C OF 61<sup>ST</sup> STREET

## NEARBY PUBLIC TRANSIT

**N R W** @ 5th Avenue – 59th Street

**4 5 6 N R W** @ Lexington Avenue – 59th Street

**Q F** @ Lexington Avenue – 63rd Street

## SELECT NEARBY

### RETAIL TENANTS

**The Loews Regency**

**The Regency Bar & Grill**

**Sant Ambroeus**

**La Goulue**

**Serafina**

**Julien Farel**

**Teuscher Chocolates of Switzerland**

**Smythson**

**Mark Cross**

**Le Bilboquet**

**Philippe**

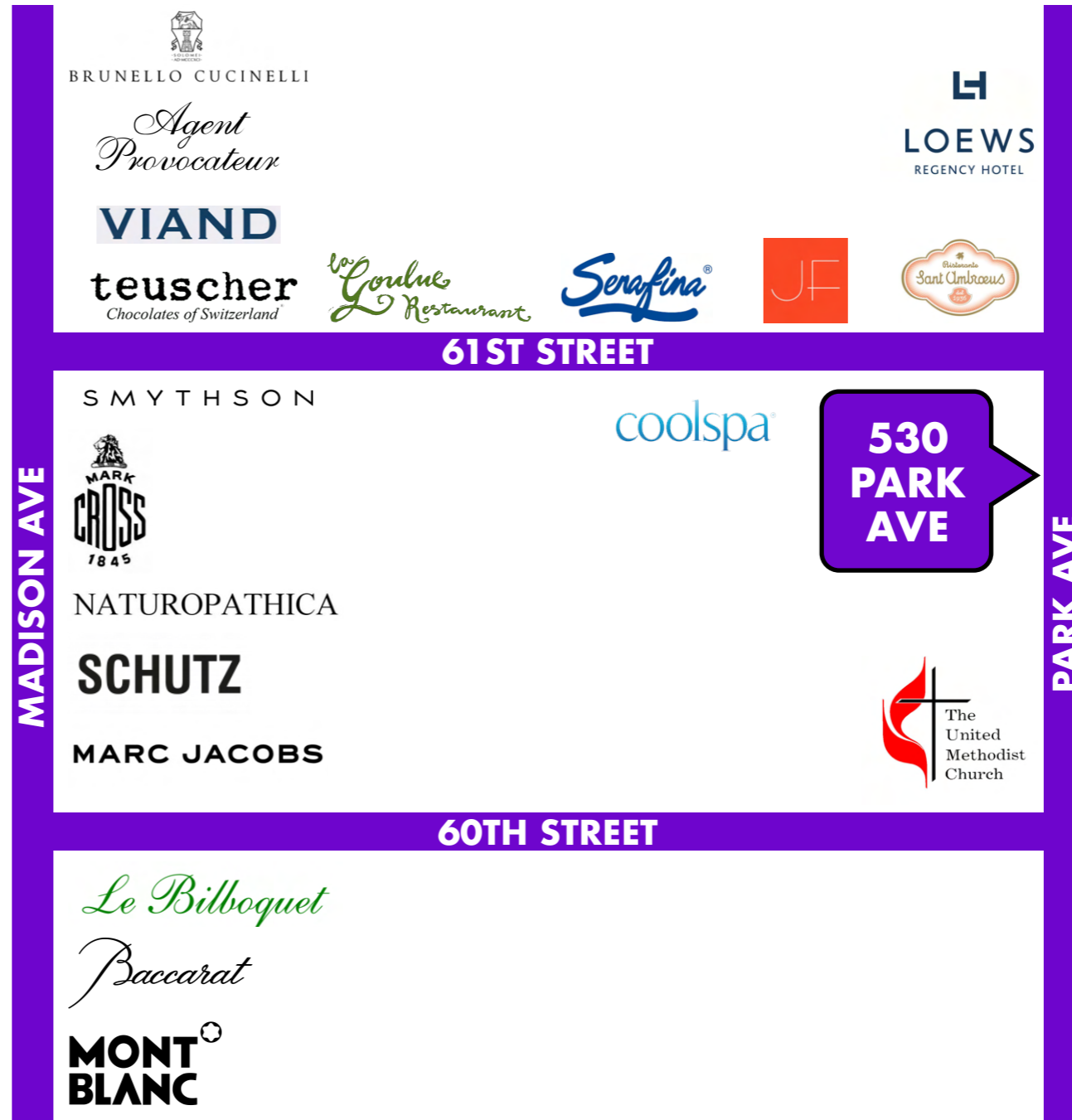
**Marc Jacobs**

**Tom Ford**

**Morgenthal Frederics**

**Brioni**

**Hermes**



BRANDON SINGER  
brandon@retailbymona.com  
516 808 6794

JASON FRIEDMAN  
jason.friedman@retailbymona.com  
917 399 8952

mona