

345

WEST 14TH STREET

BETWEEN 8TH & 9TH AVENUES

**MEATPACKING
MANHATTAN**



mona

SPACE HIGHLIGHTS

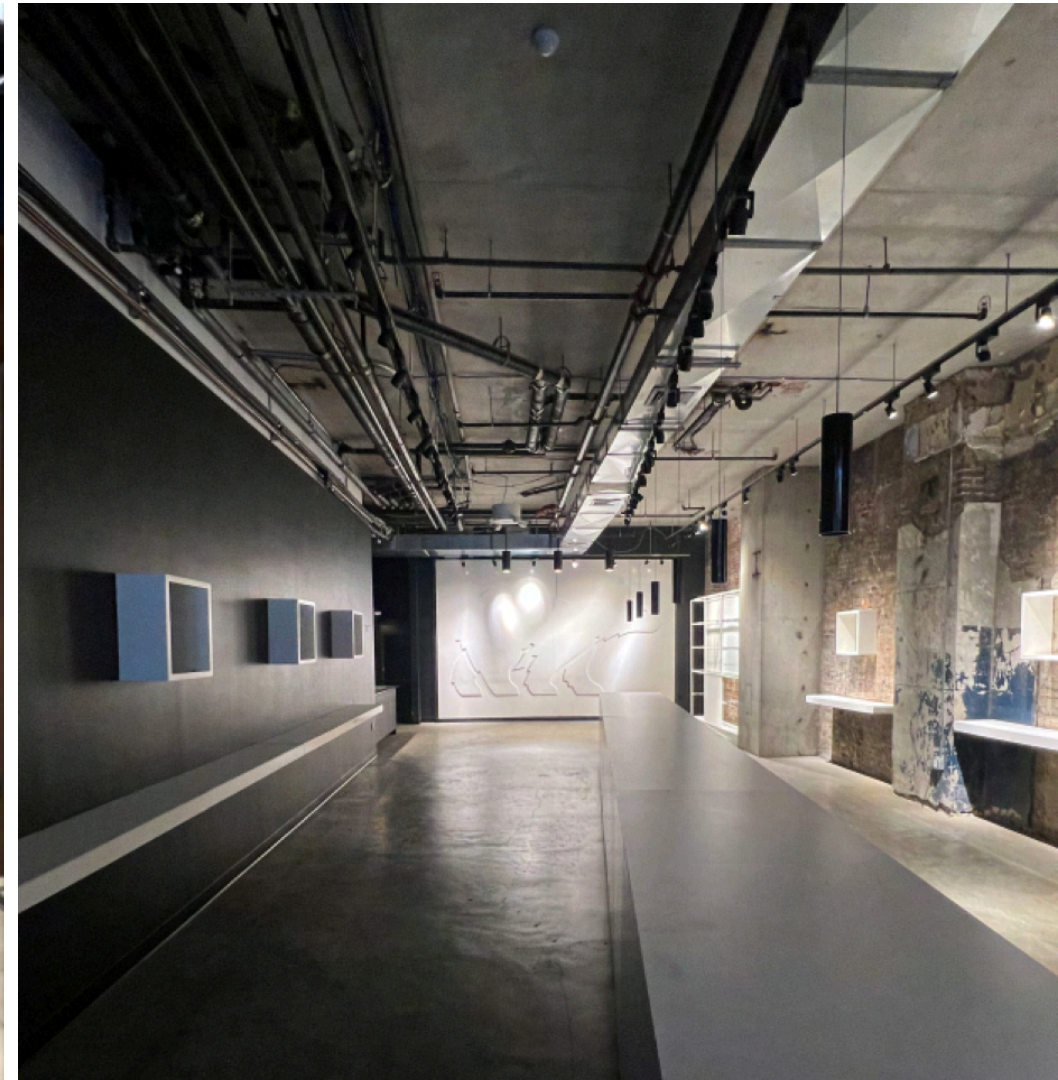
345
WEST 14TH STREET
BETWEEN 8TH & 9TH AVENUES

Formerly Columbia and Sorel.

Selling lower level.

Retail spaces can be leased together or separately; each side has an open floor plan with high ceilings.

Located in the Meatpacking District, which serves as one of New York City's most dynamic "live-work-play" environments.



RETAIL OPPORTUNITY POSITIONED AT THE CROSSROADS OF LUXURY AND COOL

BRANDON SINGER
brandon@retailbymona.com
516 808 6794

KELLY GEDINSKY
kelly@retailbymona.com
917 848 8528

KIM LEVANDOVSKY
kim@retailbymona.com
347 431 5354

SUNNY WOO
sunny@retailbymona.com
646 295 0348

mona

FLOOR PLANS

345
WEST 14TH STREET
BETWEEN 8TH & 9TH AVENUES

GROUND FLOOR

6,343 SF

LOWER LEVEL

2,062 SF

CEILING HEIGHTS

Ground Floor: 12 FT 11 IN

FRONTAGE

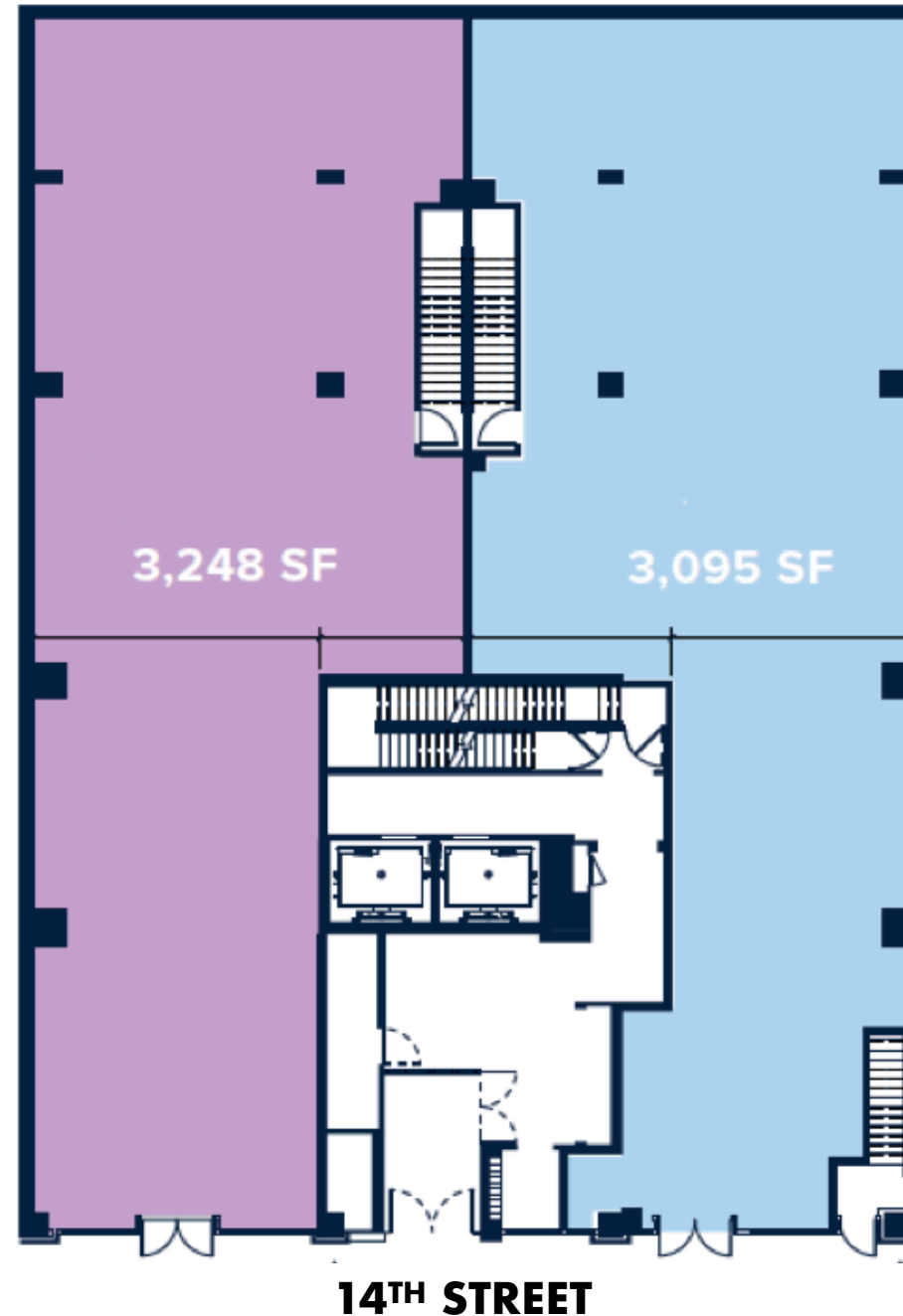
75 FT on 14th Street

POSSESSION

Immediate

**For Short or Long-Term
Tenancy, Logical Divisions
Considered**

GROUND FLOOR



Not to scale. All dimensions and conditions are approximate and for information only.

BRANDON SINGER
brandon@retailbymona.com
516 808 6794

KELLY GEDINSKY
kelly@retailbymona.com
917 848 8528

KIM LEVANDOVSKY
kim@retailbymona.com
347 431 5354

SUNNY WOO
sunny@retailbymona.com
646 295 0348

mona

NEIGHBORHOOD HIGHLIGHTS

345
WEST 14TH STREET
BETWEEN 8TH & 9TH AVENUES

Thriving TAMI office market anchored by Google and Yext headquarters.

Steps from major attractions such as the Whitney Museum, Chelsea Market, The High Line, Gansevoort Hotel, and Soho House

High-net worth neighborhood.



BRANDON SINGER
brandon@retailbymona.com
516 808 6794

KELLY GEDINSKY
kelly@retailbymona.com
917 848 8528

KIM LEVANDOVSKY
kim@retailbymona.com
347 431 5354

SUNNY WOO
sunny@retailbymona.com
646 295 0348

mona

MAP

NEARBY PUBLIC TRANSIT

A C E L F M 1 2 3 & PATH

SELECT NEARBY
RETAIL TENANTS

- Breitling**
- Patagonia**
- Apple**
- Samsung**
- Rolex**
- Sephora**
- Yext HQ**
- Google HQ**
- Catch**
- Lucid**
- Chelsea Market**
- Starbucks Reserve**
- Gansevoort Hotel**
- RH Rooftop**
- Soho House**

345 WEST 14TH STREET BETWEEN 8TH & 9TH AVENUES



BRANDON SINGER
brandon@retailbymona.com
516 808 6794

KELLY GEDINSKY
kelly@retailbymona.com
917 848 8528

KIM LEVANDOVSKY
kim@retailbymona.com
347 431 5354

SUNNY WOO
sunny@retailbymona.com
646 295 0348

