



181 BROADWAY

FINANCIAL DISTRICT
MANHATTAN

mona

20' OF FRONTAGE ON BROADWAY

181 BROADWAY



**POTENTIAL FOR
MULTI-FLOOR RETAIL**

BRANDON SINGER
brandon@retailbymona.com
516 808 6794

MICHAEL CODY
michael@retailbymona.com
513 374 8630

MANU WENDUM
manu@retailbymona.com
917 331 6238

KIM LEVANDOVSKY
kim@retailbymona.com
347 431 5354



FLOOR PLANS

LOCATION

Frontage on Broadway

GROUND FLOOR

2,200 SF

SECOND FLOOR

2,200 SF

BASEMENT

1,500 SF

CEILING HEIGHTS

Ground: 10 FT

Second Floor: 10 FT

Basement: 10 FT

FRONTAGE

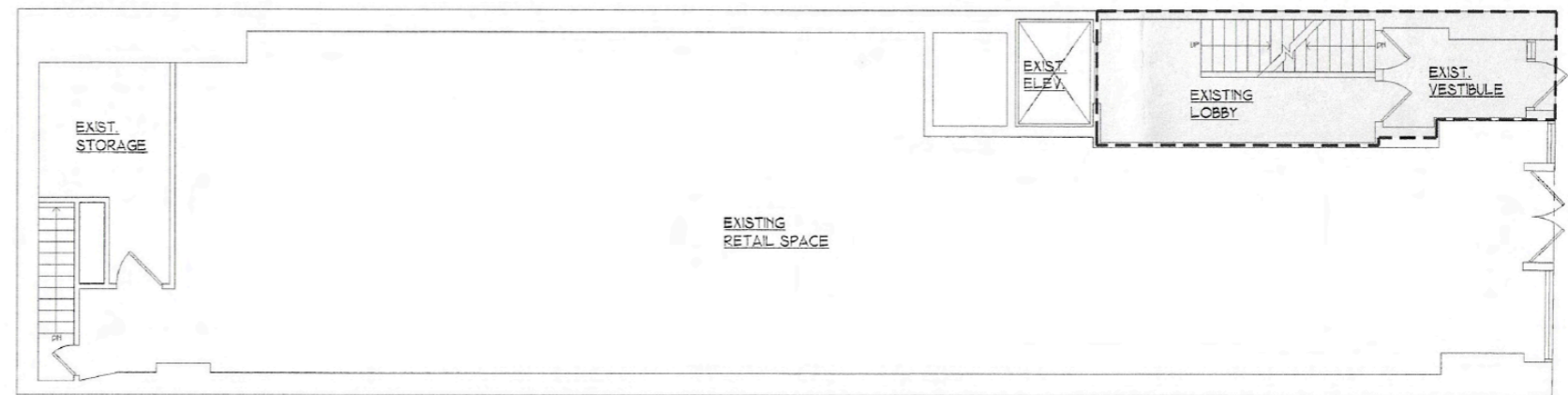
20 FT on Broadway

POSSESSION

Off-market opportunity. Available March 1st, 2024.

No floor plans available for Second Floor or Basement.

GROUND FLOOR



BROADWAY

Not to scale. All dimensions and conditions are approximate and for information only.

BRANDON SINGER
brandon@retailbymona.com
516 808 6794

MICHAEL CODY
michael@retailbymona.com
513 374 8630

MANU WENDUM
manu@retailbymona.com
917 331 6238

KIM LEVANDOVSKY
kim@retailbymona.com
347 431 5354

HIGHLIGHTS

Currently Aldo.

Second Floor can be potential leased with or without the Ground Floor. Second Floor is currently being used as Aldo's stock room.

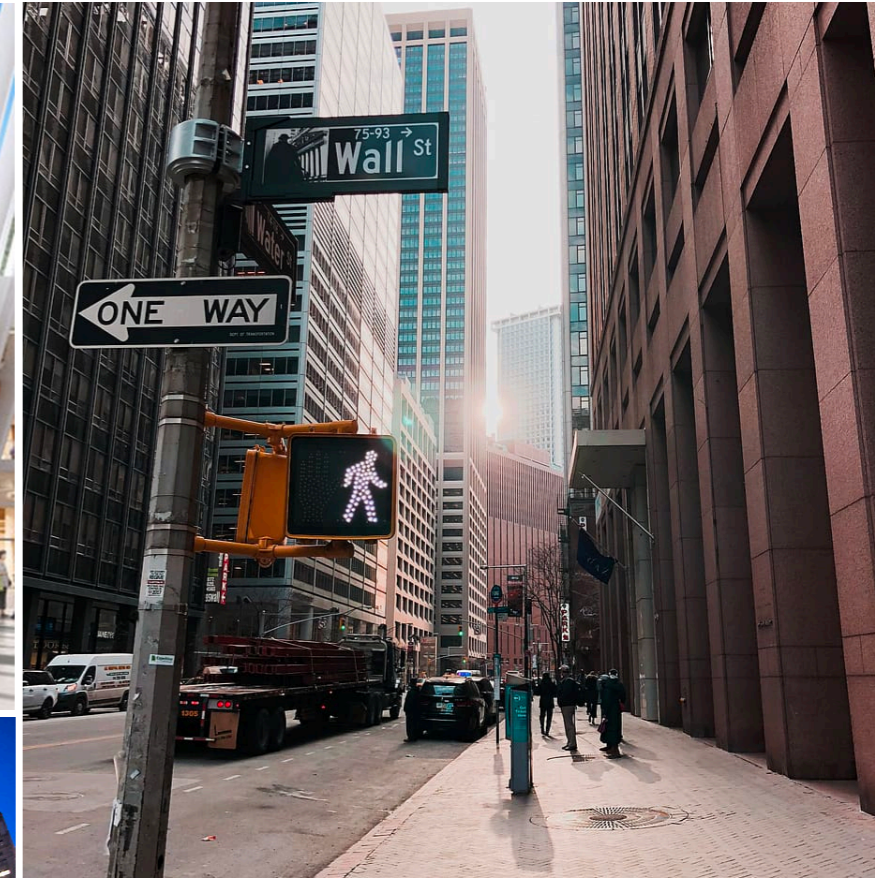
Opportunity for blade signage and second floor signage.

Prime location on one of New York City's busiest avenues.

Major nearby attractions include One World Trade Center, The National September 11 Memorial Museum, Trinity Church, the Federal Reserve Bank of New York, and the New York Stock Exchange.

Steps from Fulton Center and The Oculus, which average a combined 25 million passengers per year.

The neighborhood is filled with luxury condos and high-net-worth residents.



BRANDON SINGER
brandon@retailbymona.com
516 808 6794

MICHAEL CODY
michael@retailbymona.com
513 374 8630

MANU WENDUM
manu@retailbymona.com
917 331 6238

KIM LEVANDOVSKY
kim@retailbymona.com
347 431 5354

MAP

NEARBY PUBLIC TRANSIT

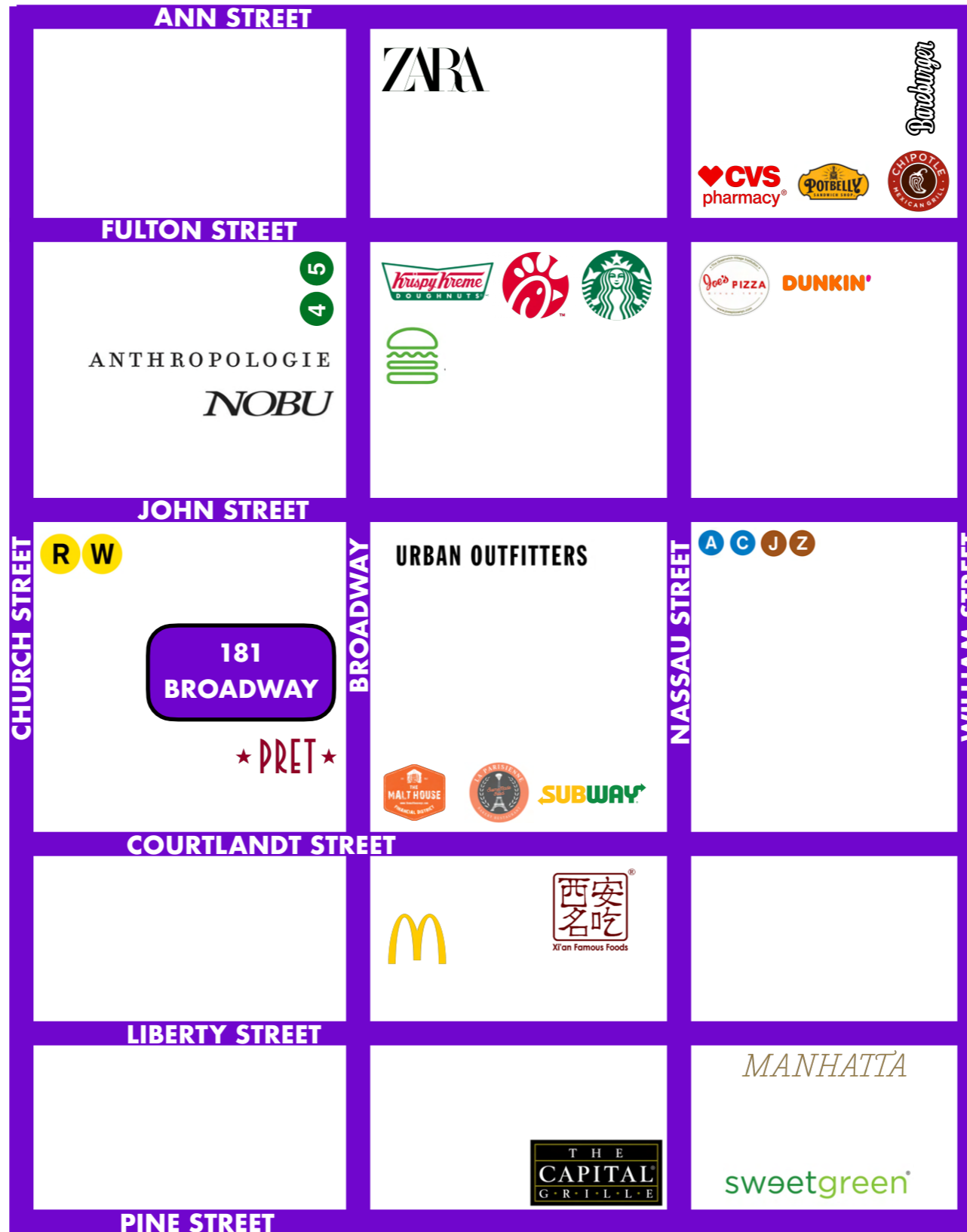
R W J Z 1 2 3 4 5

SELECT NEARBY TENANTS

- Zara**
- Nobu**
- Urban Outfitters**
- The Capital Grille**
- Joe's Pizza**
- Pret a Manger**
- Starbucks**
- Shake Shack**
- La Parisienne Cafe**
- Anthropologie**

SELECT WESTFIELD ONE WORLD TRADE CENTER TENANTS

- H&M**
- Eataly**
- Apple**
- Sunglass Culture**
- Swarovski**
- Banana Republic**
- Boss**
- & Other Stories**
- Casper**



BRANDON SINGER
brandon@retailbymona.com
516 808 6794

MICHAEL CODY
michael@retailbymona.com
513 374 8630

MANU WENDUM
manu@retailbymona.com
917 331 6238

KIM LEVANDOVSKY
kim@retailbymona.com
347 431 5354

BRANDON SINGER

CEO + FOUNDER

brandon@retailbymona.com

516 808 6794

MICHAEL CODY

michael@retailbymona.com

513 374 8630

MANU WENDUM

manu@retailbymona.com

917 331 6238

KIM LEVANDOVSKY

kim@retailbymona.com

347 431 5354



@RETAILBYMONA



RETAIL-BY-MONA

RETAILBYMONA.COM

mona