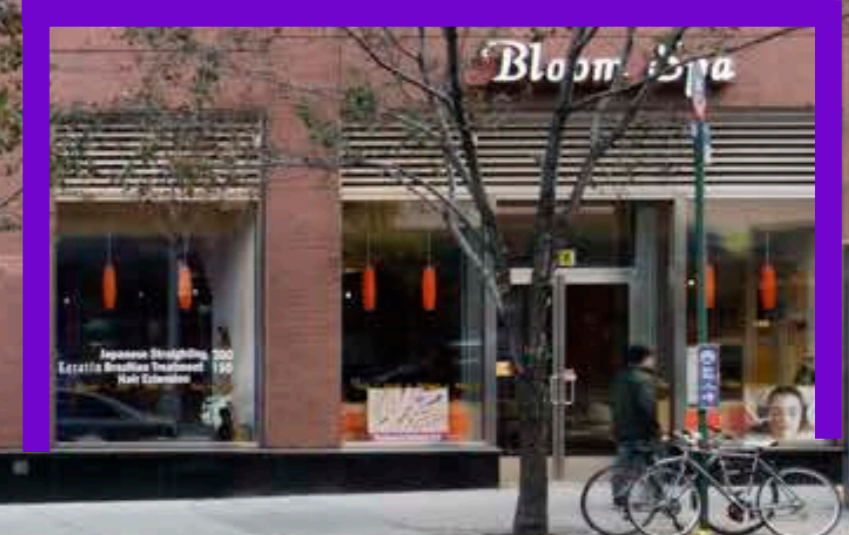
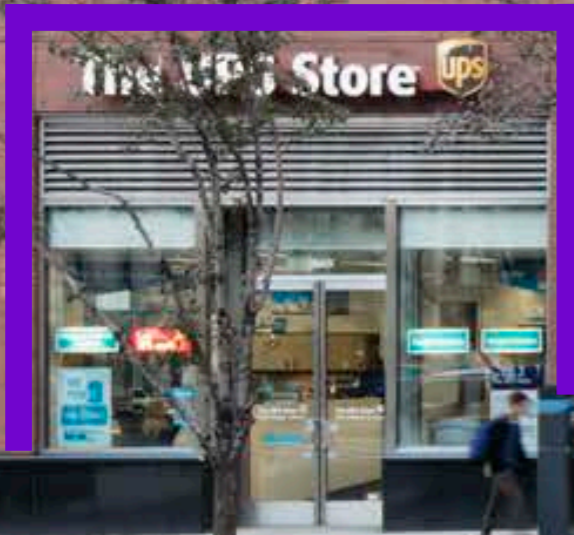


1728-1732 FIRST AVENUE

UPPER EAST SIDE

MANHATTAN





2,500+ SQ FT OF INLINE SPACE

BRANDON SINGER
brandon@retailbymona.com
516 808 6794

MICHAEL CODY
michael@retailbymona.com
513 374 8630

SUZANNE BERNSTOCK
Suzanne@retailbymona.com
610 903 2207

mona

FLOOR PLANS

1728-1732
FIRST AVENUE

ADDRESS

1728 First Avenue (Inline Unit)

LOCATION

Between E 89th Street and
90th Street

GROUND FLOOR

2,719 SF

CEILING HEIGHT

10 FT

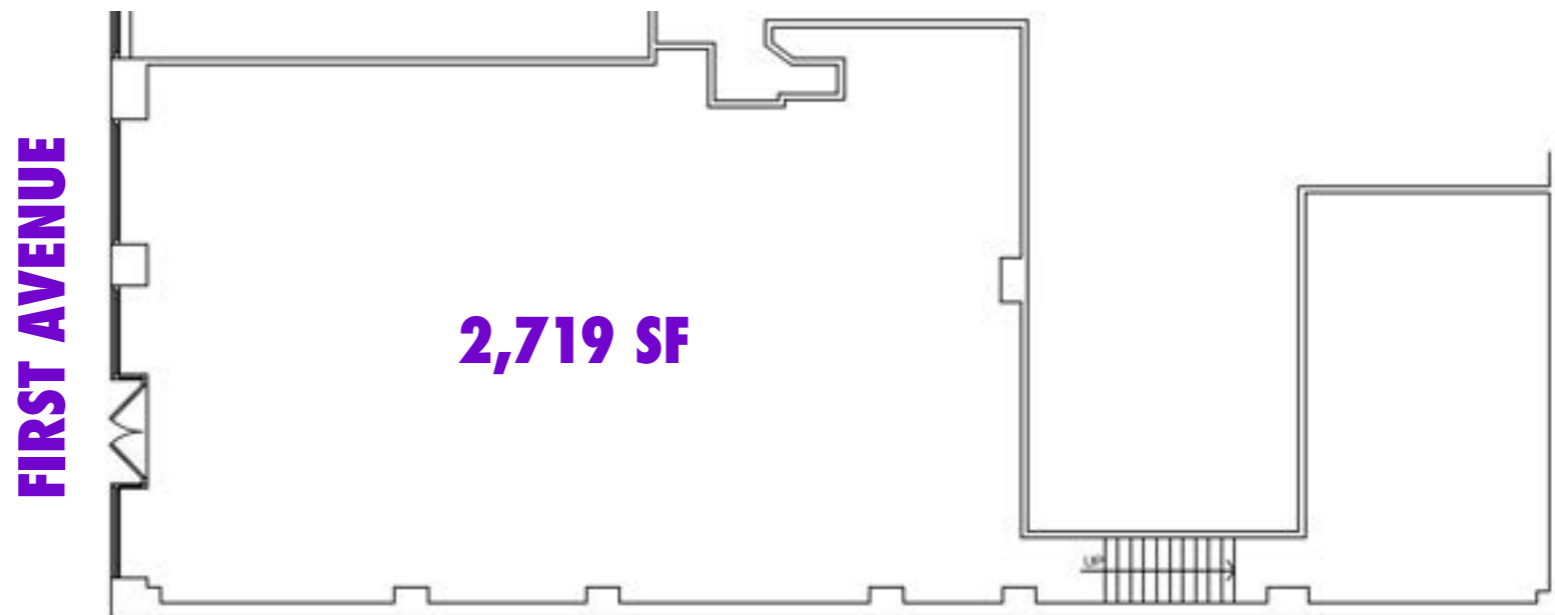
FRONTAGE

31 FT on First Avenue

POSSESSION

Immediate

GROUND FLOOR



Not to scale. All dimensions and conditions are approximate and for information only.

BRANDON SINGER
brandon@retailbymona.com
516 808 6794

MICHAEL CODY
michael@retailbymona.com
513 374 8630

SUZANNE BERNSTOCK
Suzanne@retailbymona.com
610 903 2207

mona



SMALL-FORMAT CORNER RETAIL SPACE

BRANDON SINGER
brandon@retailbymona.com
516 808 6794

MICHAEL CODY
michael@retailbymona.com
513 374 8630

SUZANNE BERNSTOCK
Suzanne@retailbymona.com
610 903 2207

mona

FLOOR PLANS

1728-1732
FIRST AVENUE

ADDRESS

1732 First Avenue (Corner Unit)

LOCATION

Corner of First Avenue and E 90th Street

GROUND FLOOR

900 SF

CEILING HEIGHT

10 FT

FRONTAGE

19 FT on First Avenue

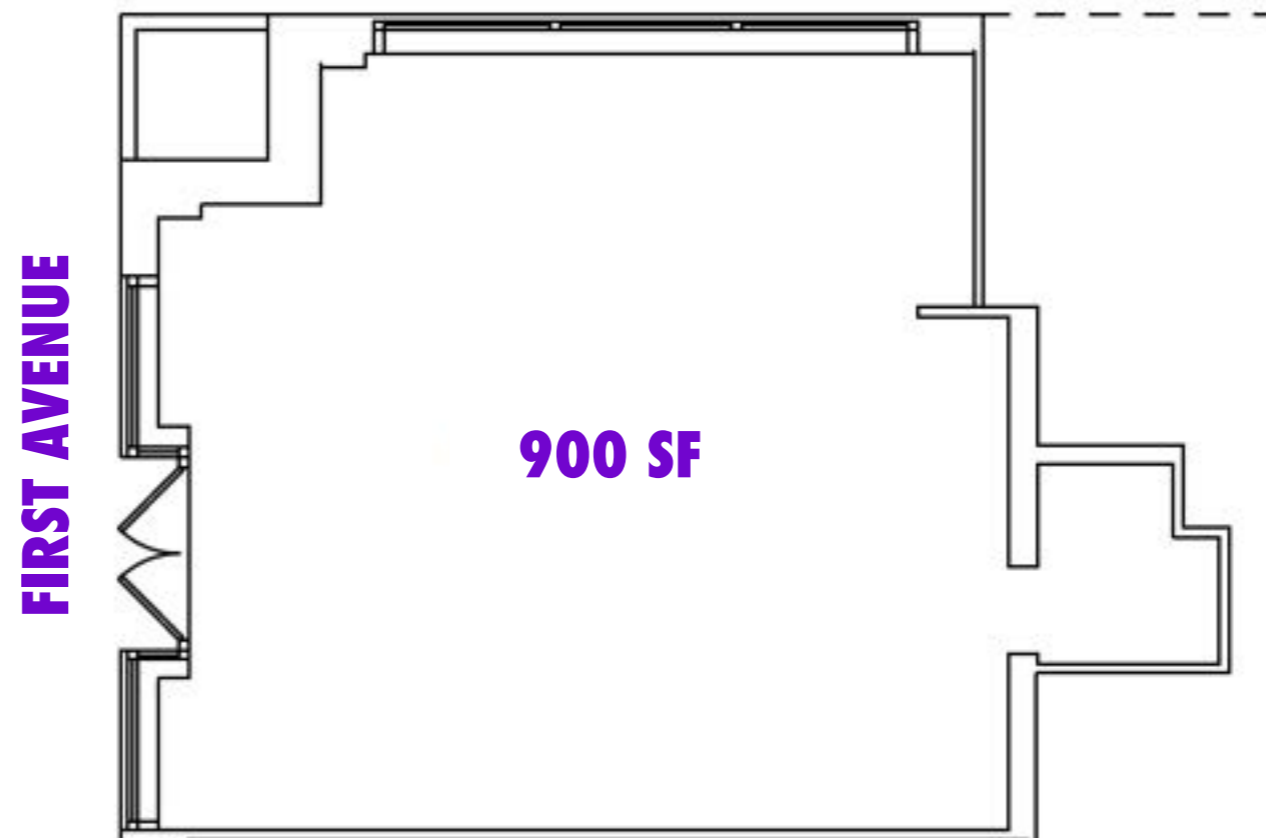
19 FT on East 90th Street

POSSESSION

Immediate

GROUND FLOOR

E 90th STREET



Not to scale. All dimensions and conditions are approximate and for information only.

BRANDON SINGER
brandon@retailbymona.com
516 808 6794

MICHAEL CODY
michael@retailbymona.com
513 374 8630

SUZANNE BERNSTOCK
Suzanne@retailbymona.com
610 903 2207

mona

HIGHLIGHTS

Located at the base of a 24-story condominium building.

Excellent opportunity for neighborhood-focused retail tenants.

1732 First Avenue is currently The UPS Store.

1728 First Avenue is currently Bloom Spa.

Both spaces are adjacent to Starbucks.

Please note that spaces cannot be combined.

Open to most logical uses.



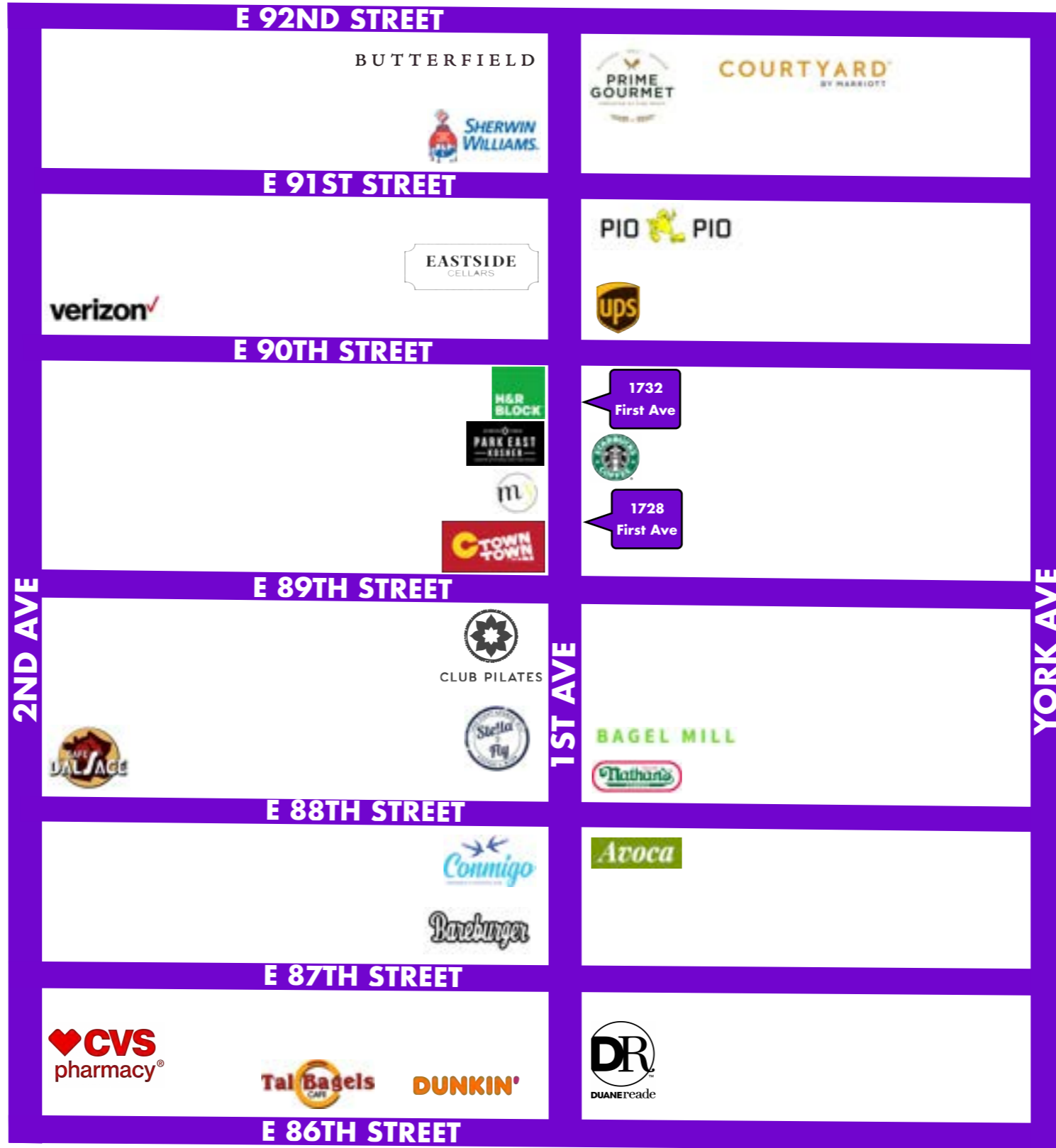
MAP

NEARBY PUBLIC TRANSIT

N Q & R Subways

SELECT NEARBY TENANTS

- Starbucks
- H&R Block
- C-Town
- Club Pilates
- Park East Kosher
- Mellow Yellow Coffee
- Nathan's Famous
- Stella & Fly
- Eastside Cellars
- Pio Pio
- Sherwin Williams Paints
- Prime Gourmet Market



N Q R

1728-1732
FIRST AVENUE

BRANDON SINGER
brandon@retailbymona.com
516 808 6794

MICHAEL CODY
michael@retailbymona.com
513 374 8630

SUZANNE BERNSTOCK
Suzanne@retailbymona.com
610 903 2207

