

# 121 FULTON STREET

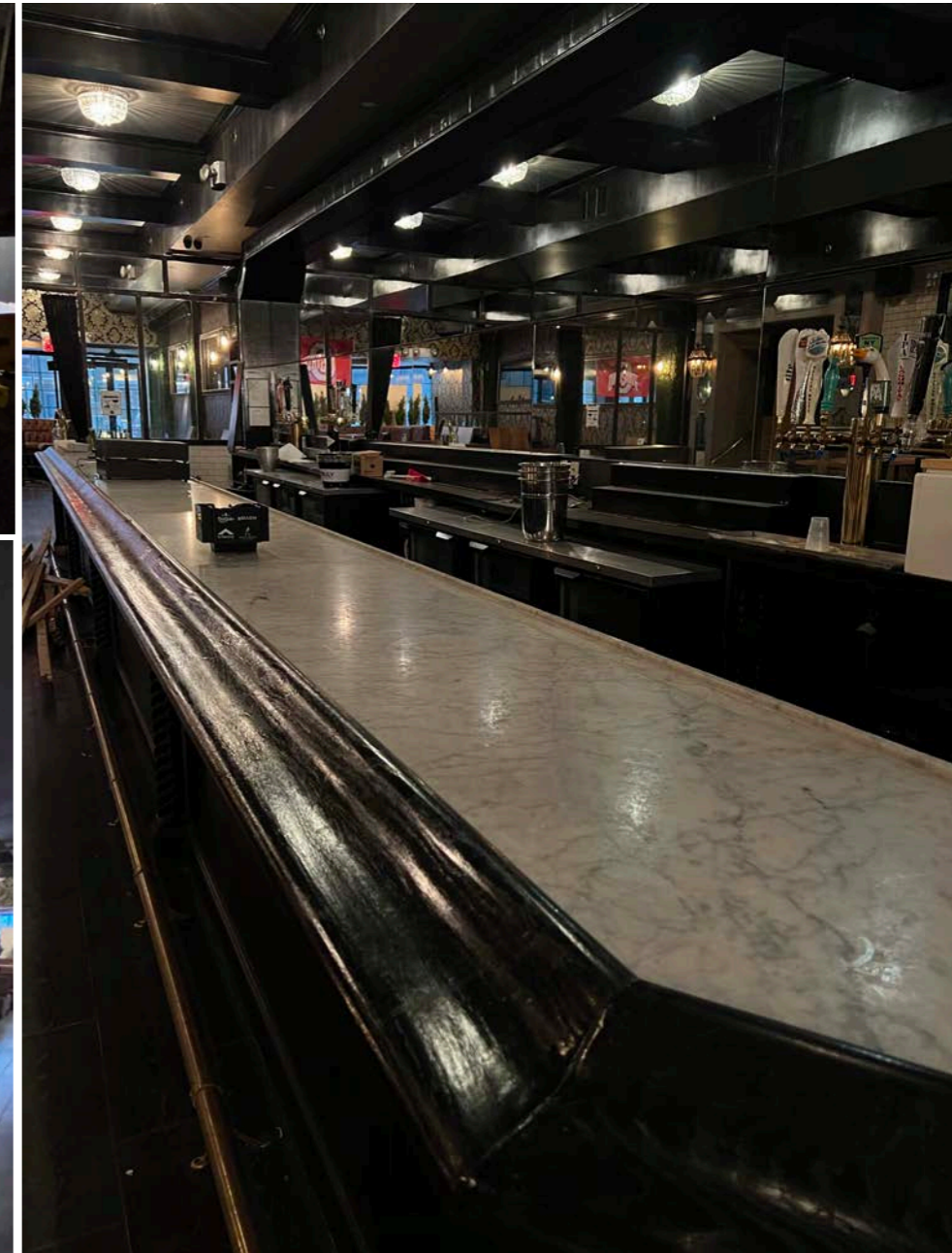
FINANCIAL DISTRICT

MANHATTAN

mona



# BUILT-OUT BAR & RESTAURANT



# STEPS FROM MAJOR TRANSIT

BRANDON SINGER  
brandon@retailbymona.com  
516 808 6794

MICHAEL CODY  
michael@retailbymona.com  
513 374 8630

KIM LEVANDOVSKY  
kim@retailbymona.com  
347 431 5354

mona



# BLOCK-THROUGH RETAIL SPACE



# FRONTAGE ON FULTON & ANN STREETS

BRANDON SINGER  
brandon@retailbymona.com  
516 808 6794

MICHAEL CODY  
michael@retailbymona.com  
513 374 8630

KIM LEVANDOVSKY  
kim@retailbymona.com  
347 431 5354

**mona**



# OVERVIEW

## LOCATION

Between Nassau Street and Williams Street

## GROUND FLOOR

Approximately 4,000 SF

## LOWER LEVEL

Approximately 3,800 SF

## CEILING HEIGHT

### Ground Floor:

Varies between 9 FT 5 IN and 12 FT 4 IN

### Lower Level:

8 FT 7 IN

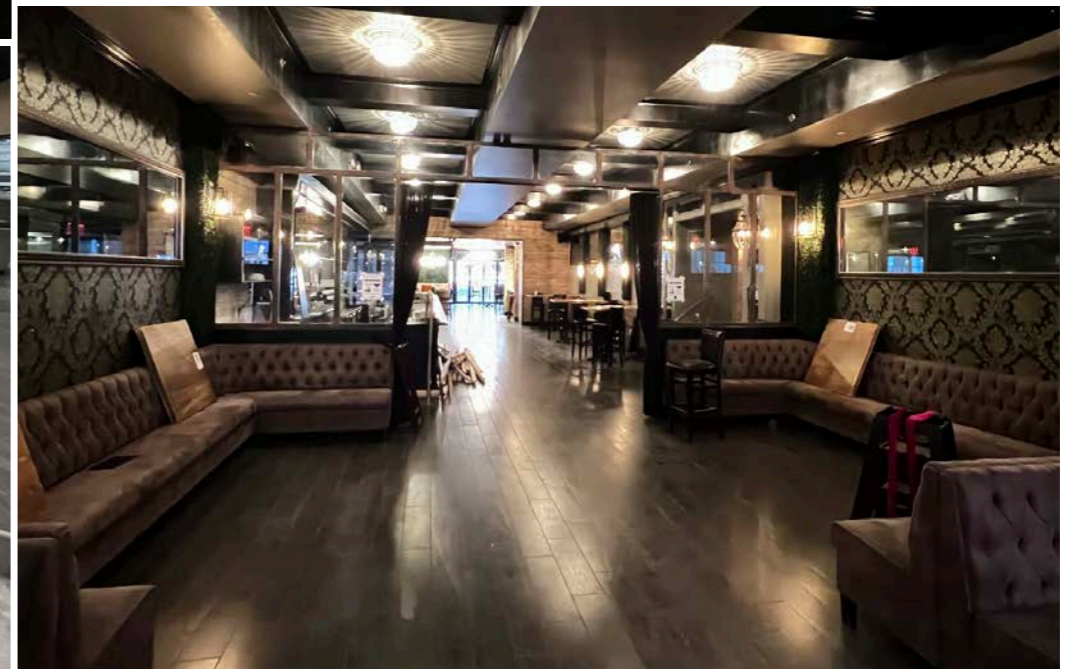
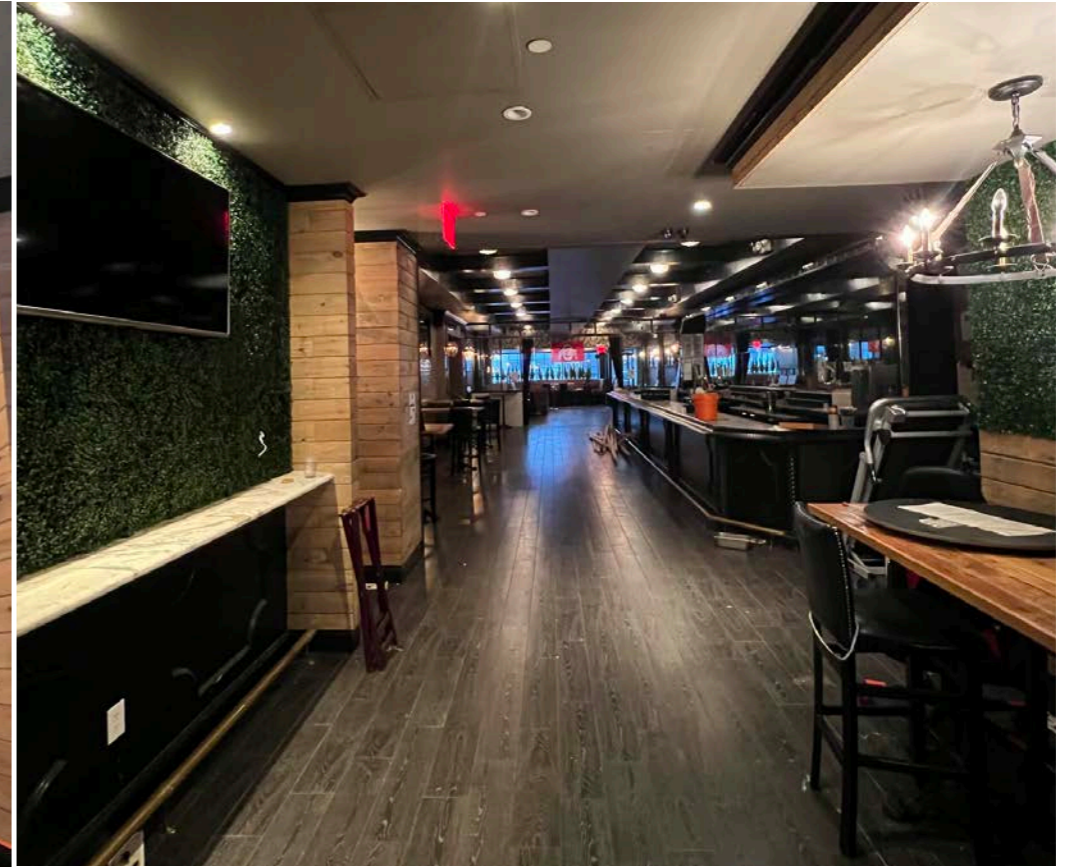
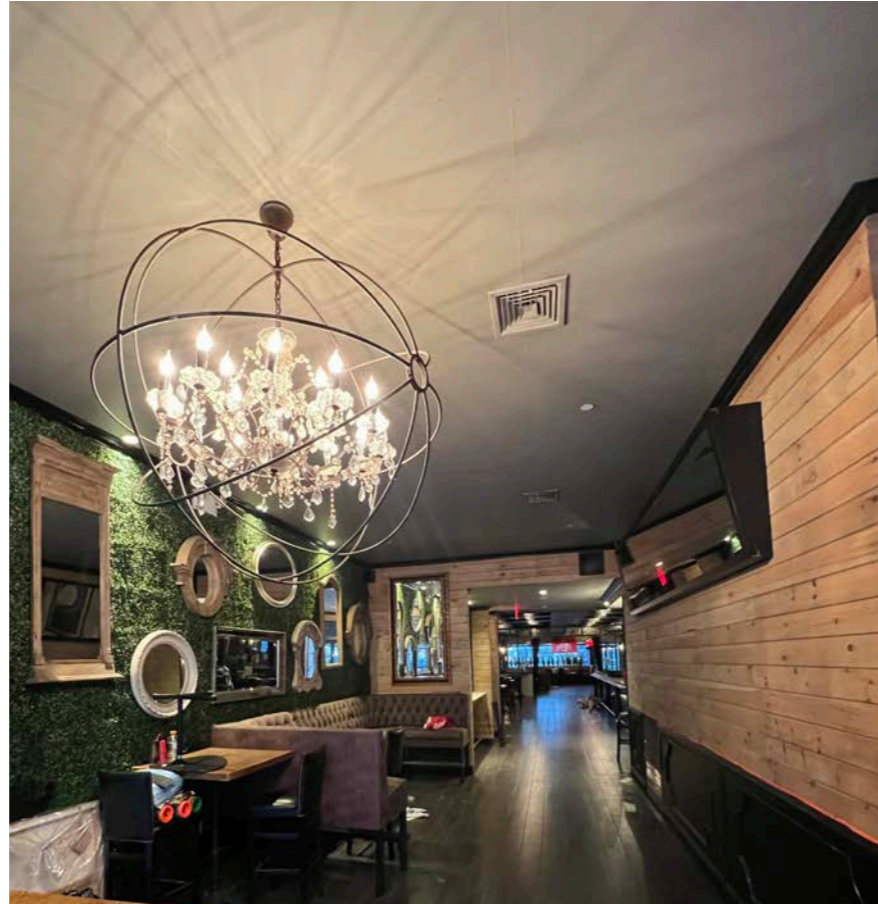
## FRONTAGE

16 FT 8 IN on Fulton Street

44 FT on Ann Street

## POSSESSION

Immediate



121  
FULTON STREET

BRANDON SINGER  
brandon@retailbymona.com  
516 808 6794

MICHAEL CODY  
michael@retailbymona.com  
513 374 8630

KIM LEVANDOVSKY  
kim@retailbymona.com  
347 431 5354

mona



# 121 FULTON STREET

## HIGHLIGHTS

Formerly The Ainsworth, a built-out bar and restaurant.

Space is fully vented.

Dual frontage on both Fulton Street and Ann Street.

Sidewalk hatch for loading next to Ann Street entrance.

Steps from the Fulton Street subway station, which served 27.7 million passengers in 2019 alone.

Close proximity to major traffic drivers like The New York Stock Exchange, City Hall, The National September 11 Memorial Museum, The Oculus, and Westfield One World Trade Center.

Surrounded by office buildings and hotels.

Several popular quick service restaurants are nearby on Fulton Street.

Open to all uses.



BRANDON SINGER  
brandon@retailbymona.com  
516 808 6794

MICHAEL CODY  
michael@retailbymona.com  
513 374 8630

KIM LEVANDOVSKY  
kim@retailbymona.com  
347 431 5354

mona



# MAP

NEARBY PUBLIC TRANSIT

**2 3 4 5 A C J & Z Subways**

SELECT NEARBY TENANTS:

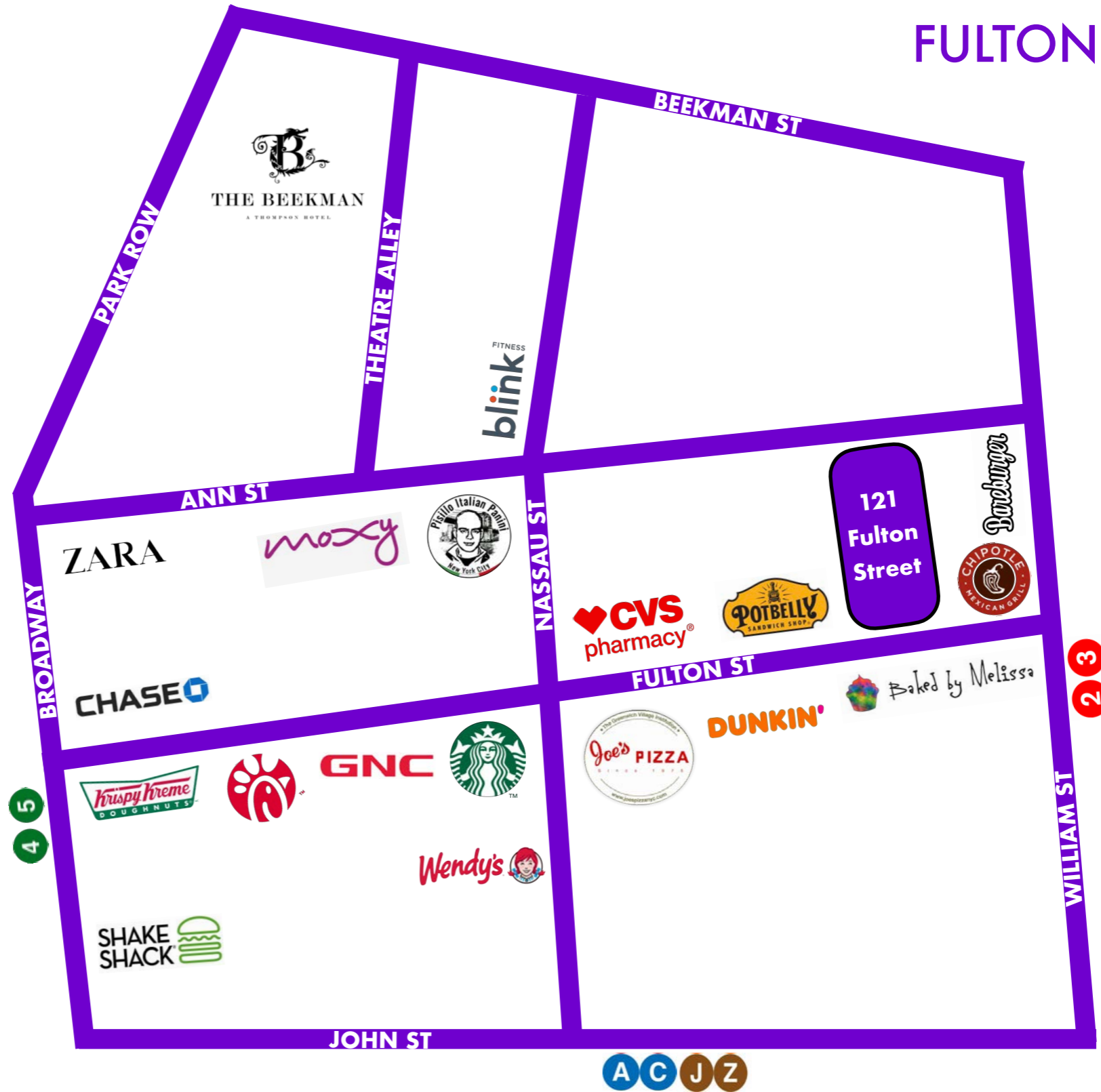
- Zara
- Chick-fil-A
- Shake Shack
- Krispy Kreme
- Chipotle
- CVS
- Starbucks
- Potbelly
- Dunkin
- Bareburger
- Wendy's
- Baked By Melissa
- Blink Fitness



SELECT WESTFIELD ONE WORLD TRADE CENTER TENANTS:

- Apple
- Eataly
- H&M
- Gloveworx
- Casper

# 121 FULTON STREET



BRANDON SINGER  
brandon@retailbymona.com  
516 808 6794

MICHAEL CODY  
michael@retailbymona.com  
513 374 8630

KIM LEVANDOVSKY  
kim@retailbymona.com  
347 431 5354





**BRANDON SINGER**  
**CEO + FOUNDER**  
brandon@retailbymona.com  
516 808 6794

**MICHAEL CODY**  
**DIRECTOR + CO-FOUNDER**  
michael@retailbymona.com  
513 374 8630

**KIM LEVANDOVSKY**  
**ASSOCIATE**  
kim@retailbymona.com  
347 431 5354

 @RETAILBYMONA

 RETAIL-BY-MONA

RETAILBYMONA.COM

**mona**