

# 477 MADISON AVENUE

**AKA 37 EAST 51ST STREET**

North block between Madison & Park Avenues

Midtown East, Manhattan

**mona**  
EXCLUSIVE RETAIL LEASING AGENT

## PRIME RETAIL IN MIDTOWN EAST



# FLOOR PLANS

**477 Madison Avenue  
aka 37 East 51st Street**

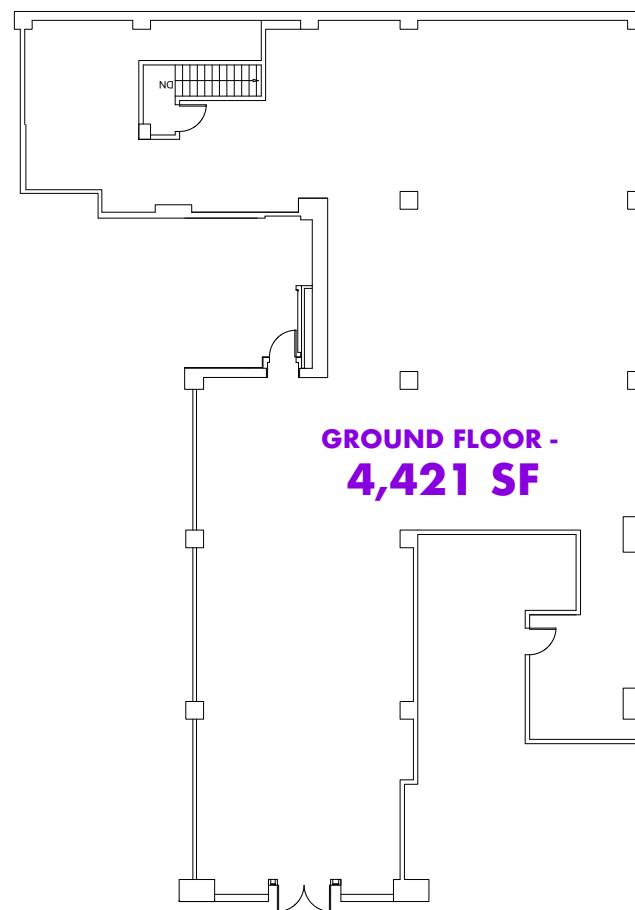
**GROUND FLOOR:** 4,421 SF

**FRONTAGE:** 30 FT on East 51st Street

**POSSESSION:** Immediate

## HIGHLIGHTS:

- Prime retail directly across from the Lotte New York Palace and St Patrick's Cathedral.
- Join 477 Madison Avenue's current retailers: FedEx Office, Cha Cha Matcha, and recently-signed Charles Tyrwhitt.
- Divisions will be considered.
- Direct Access to Loading Dock.
- All non-vented uses considered.
- **13,715 SF Second Floor can also be made available.**



**EAST 51ST STREET**

**mona**

**BRANDON SINGER**

BRANDON@RETAILBYMONA.COM  
516-808-6794

**JOHN DIGANGI**

JOHN@RETAILBYMONA.COM  
516-776-0664

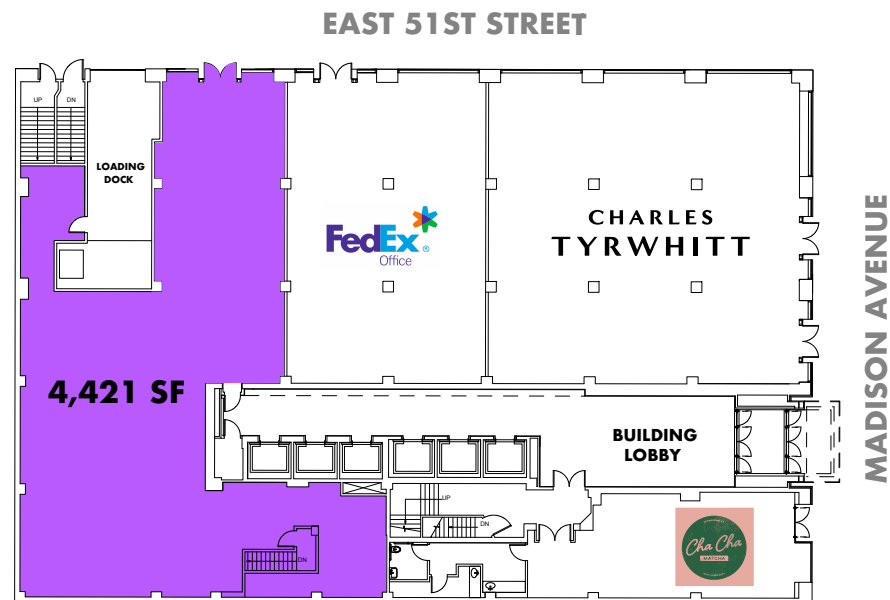
**SUZANNE BERNSTOCK**

SUZANNE@RETAILBYMONA.COM  
610-903-2207



# NEIGHBORHOOD

**477 Madison Avenue  
aka 37 East 51st Street**



## OVERVIEW:

- Crosstown thoroughfare between Park Avenue offices and Fifth Avenue shopping.
- Major menswear and food and beverage corridor.
- Steps from major transit hubs including:
  - 9 subway lines - B, D, F, M, E, 4, 6, S, 7
  - Grand Central
  - New LIRR entrance on 48th Street - Approximately 75,000 riders per day.
- At the base of a 24-story office building.
- Centrally located in a dense office market, surrounded by headquarters for leading financial institutions including Blackstone and JPMorgan Chase's new global headquarters.
- 172,000 daytime workers.
- \$18 million in total neighboring retail expenditure.
- 125 million visitors per annum to nearby Rockefeller Center.
- Median income of \$97,000.

**mona**

**BRANDON SINGER**

BRANDON@RETAILBYMONA.COM  
516-808-6794

**JOHN DIGANGI**

JOHN@RETAILBYMONA.COM  
516-776-0664

**SUZANNE BERNSTOCK**

SUZANNE@RETAILBYMONA.COM  
610-903-2207

# MAP

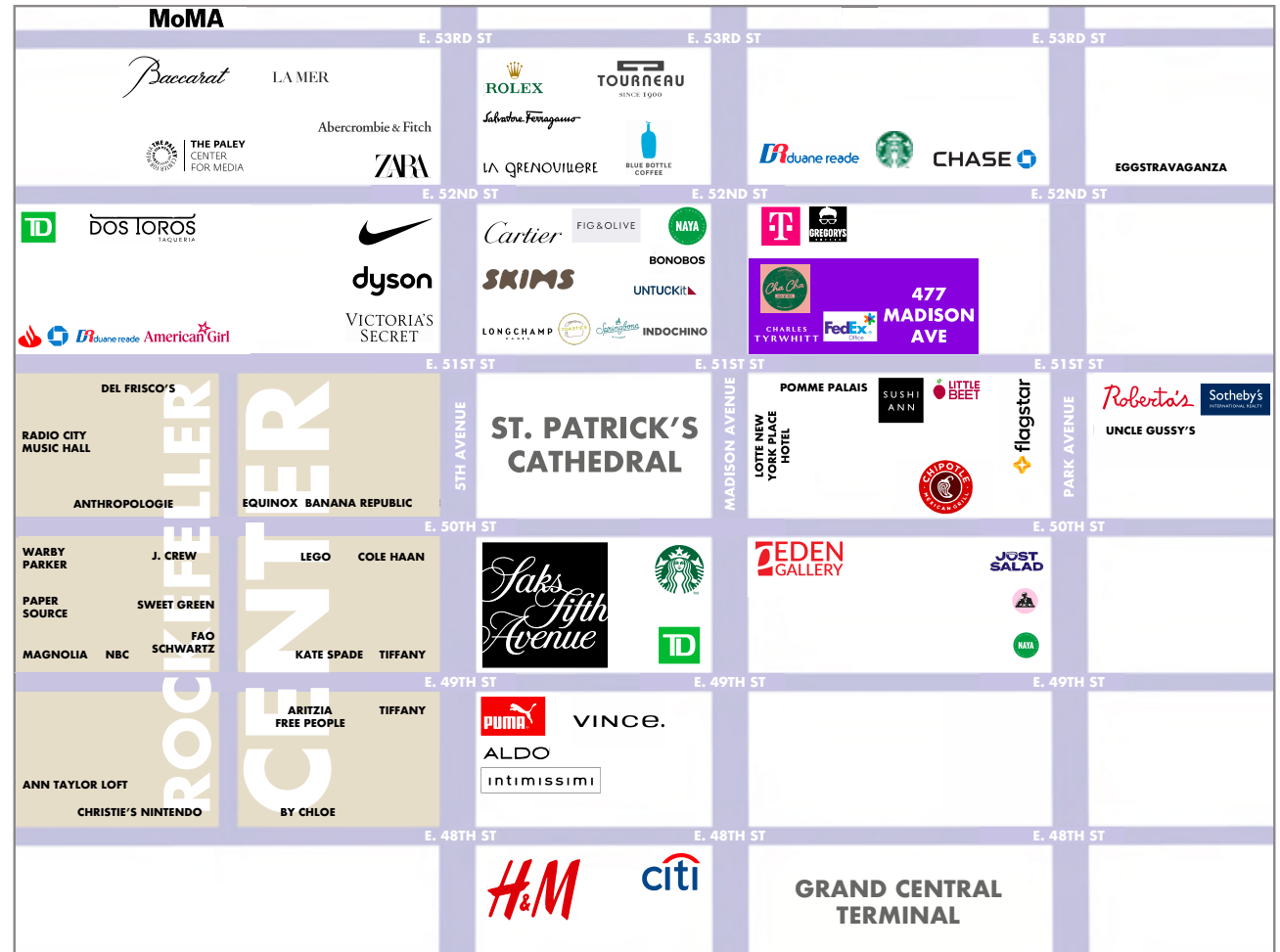
**477 Madison Avenue  
aka 37 East 51st Street**

## NEARBY PUBLIC TRANSIT



## SELECT NEARBY RETAIL TENANTS

Saks Fifth Avenue  
Bonobos  
Indochino  
Cartier  
Equinox  
Nike  
Burberry  
Coach  
Jimmy Choo  
Sotheby's  
FedEx Office  
Cha Cha Matcha  
Charles Tyrwhitt (Coming Soon)



This information has been obtained from sources believed reliable, but has not been verified for accuracy or completeness. You should conduct a careful, independent investigation of the property and verify all information. Any reliance on this information is solely at your own risk. MONA and the MONA logo are service marks of Mona Retail Holdings LLC. All other marks displayed on this document are the property of their respective owners, and the use of such logos does not imply any affiliation with or endorsement of Mona Retail Holdings LLC.

**mona**

**BRANDON SINGER**

BRANDON@RETAILBYMONA.COM  
516-808-6794

**JOHN DIGANGI**

JOHN@RETAILBYMONA.COM  
516-776-0664

**SUZANNE BERNSTOCK**

SUZANNE@RETAILBYMONA.COM  
610-903-2207