

20 VESEY STREET

Financial District
MANHATTAN



FLOORPLANS

20
VESEY
STREET

SIZE

Ground Floor: **3,000 SF**

Basement: **1,500 SF**

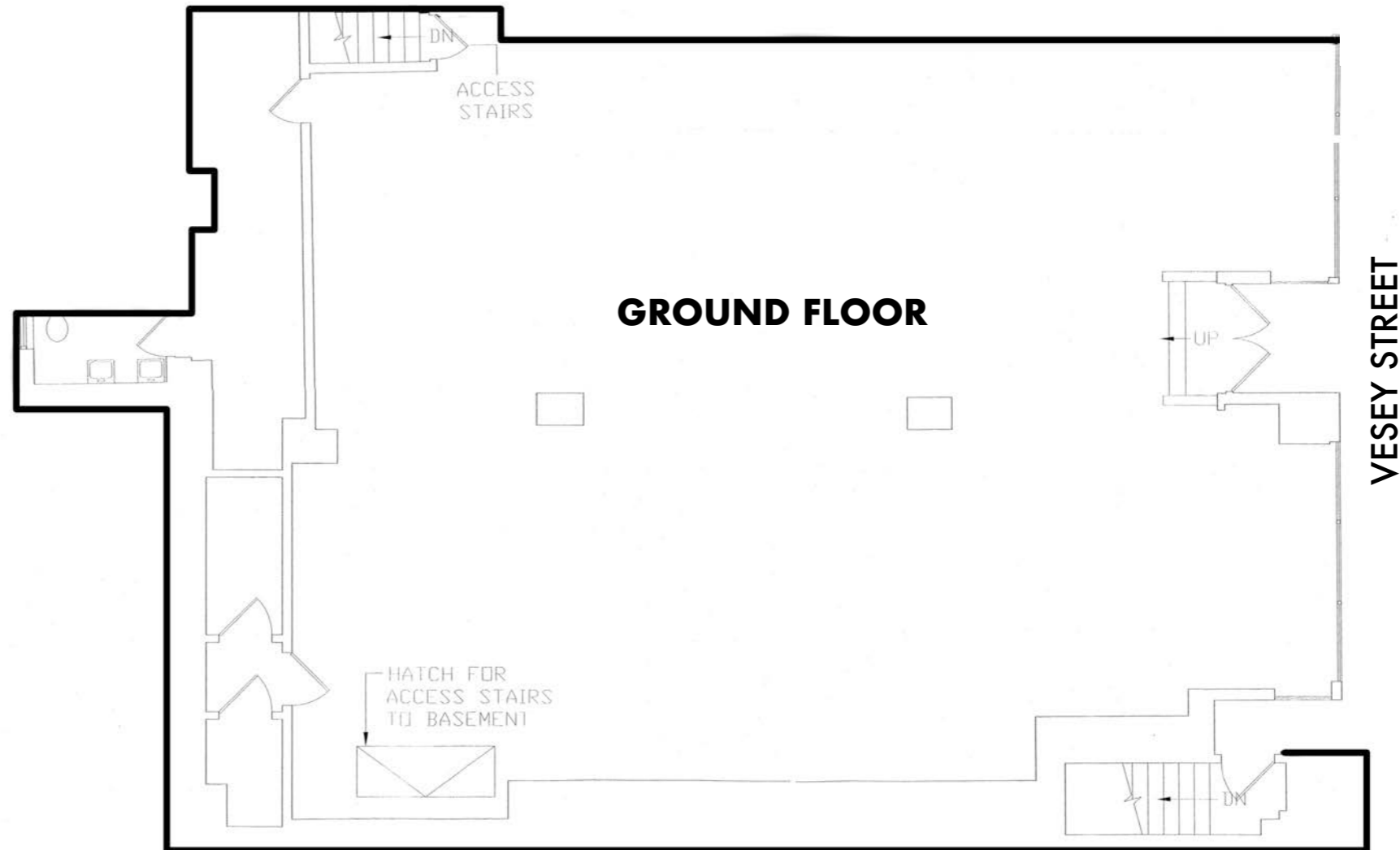
CEILING HEIGHTS

Ground Floor: **15' 8"**

Basement: **10' 6"**

Frontage: **38 FT**

Possession: **Immediate**



* Please note that the above floor plans are not As Built. The current retail space includes an approximately 300 SF office mezzanine in the rear of the space.

This information has been secured from sources deemed reliable. No representation is made as to the accuracy of the information provided. References to square footage are approximate. Tenant and/or purchaser must independently verify all information and bears all risk for any inaccuracies.

BRANDON SINGER
brandon@retailbymona.com
516 808 6794

MICHAEL CODY
michael@retailbymona.com
513 374 8630

KIM LEVANDOVSKY
kim@retailbymona.com
347 431 5354

mona

HIGHLIGHTS

Steps from Santiago Calatrava's Oculus and the World Trade Center Transportation hub, a globally recognizable tourist destination that serves over 17 million passengers per annum.

Close proximity to the Fulton Street subway complex. With nearly 27 million passengers per year, Fulton Street is the fifth-busiest station in New York City.

Short walk to traffic drivers like One World Trade Center, WeWork, Brookfield Place, City Hall, the 9/11 Memorial Museum, and several major hotels, including the Four Seasons.

Located along a heavily trafficked street directly across from St. Paul's Chapel of Trinity Church Wall Street.

Excellent Ground Floor ceiling heights.

Space as built includes a small office mezzanine—Approximately 300 SF.



BRANDON SINGER
brandon@retailbymona.com
516 808 6794

MICHAEL CODY
michael@retailbymona.com
513 374 8630

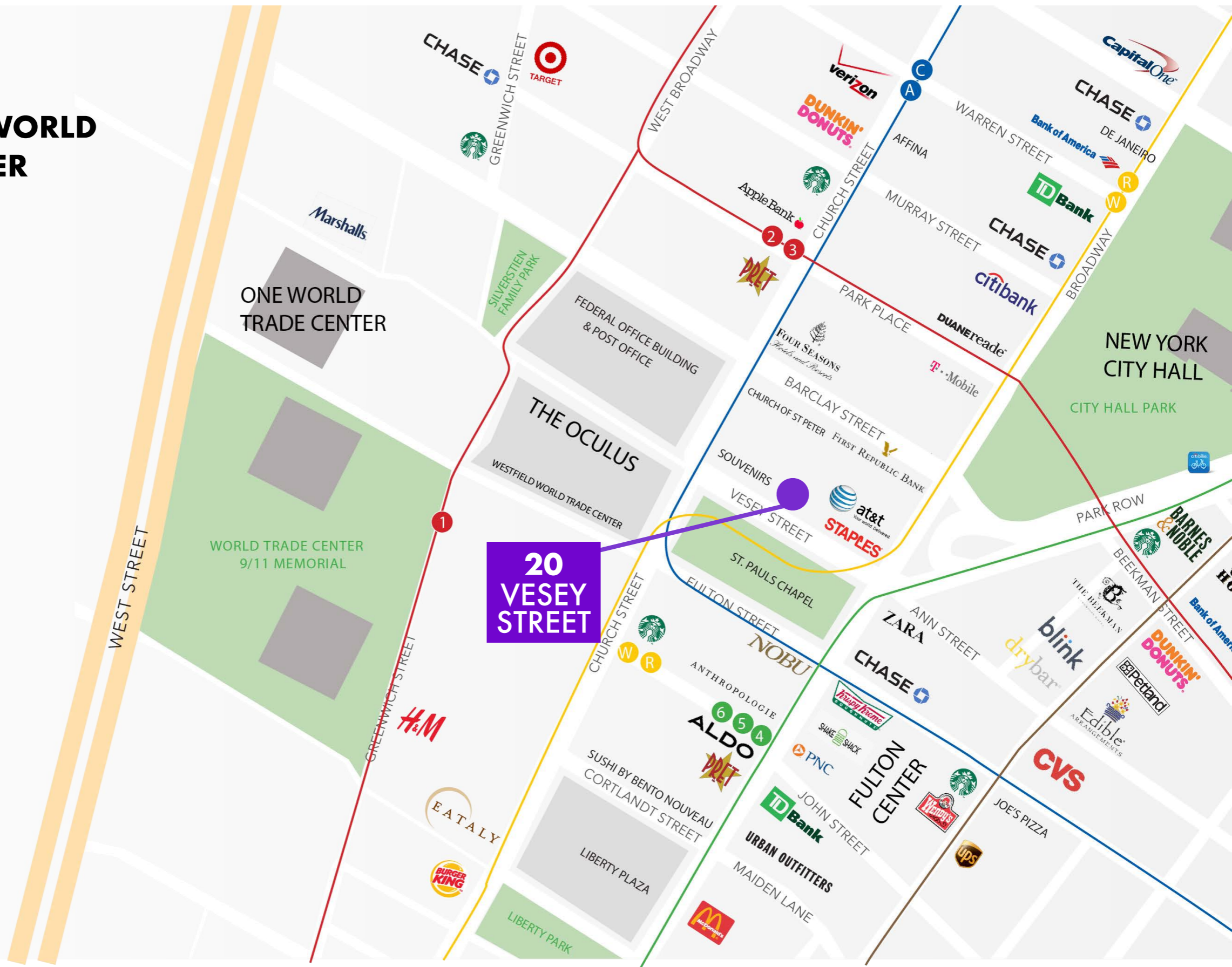
KIM LEVANDOVSKY
kim@retailbymona.com
347 431 5354

mona

STEPS FROM WESTFIELD WORLD TRADE CENTER

TENANTS INCLUDE:

- & Other Stories
- Aesop
- Apple
- Breitling
- Casper
- COS
- Dior Beauty
- Eataly
- H&M
- Kate Spade
- Kiehl's
- Lady M
- L'Occitane
- M.A.C.
- Rituals
- Sephora
- Shake Shack
- Sugarfina
- Under Armor



BRANDON SINGER
 brandon@retailbymona.com
 516 808 6794

MICHAEL CODY
 michael@retailbymona.com
 513 374 8630

KIM LEVANDOVSKY
 kim@retailbymona.com
 347 431 5354



BRANDON SINGER

CEO + FOUNDER

brandon@retailbymona.com

516 808 6794

MICHAEL CODY

DIRECTOR + CO-FOUNDER

michael@retailbymona.com

513 374 8630

KIM LEVANDOSKY

ASSOCIATE

kim@retailbymona.com

347 431 5354

 @RETAILBYMONA

 RETAIL-BY-MONA

RETAILBYMONA.COM



mona

